

# RICHMOND TIMES

CRESKIT  
EUNDO



VOL. 12 No. 7

december 19, 1973

“COMMITTEE UNITY WAS DESTROYED MINUTES BEFORE THE MEETING – I COULDN’T BELIEVE IT” – JANET McLEOD



FOUR MEMBERS OF THE PRESIDENTIAL SEARCH COMMITTEE AT THE DECEMBER 3rd, MEETING OF THE RICHMOND COLLEGE ASSEMBLY. LEFT TO RIGHT: LARRY NACHMAN, AL LEVINE, JANET McLEOD, FREEMA SCHNITZER.

.....  
: TEAR TO OPEN :  
.....



THE SEARCH COMMITTEE  
Photo: D. C. Sheehan



DAVID LARZA AT DEC. 3rd RICHMOND COLLEGE ASSEMBLY  
Photo: D. C. Sheehan

## BEHIND THE SCENES

# THE MAKING OF A PRESIDENT

On Nov. 26, 1973, six Board of Higher Education (B.H.E.) members nominated a man as Richmond College's new president - in total and unexpected opposition to the six powerless representatives from Richmond College who, together with the six B.H.E. members, comprised the Richmond College Presidential Search Committee. The man's nomination is expected to be confirmed in a B.H.E. meeting on Dec. 17.

I was one of three students who along with three faculty members comprised the College delegation. The B.H.E. half of the Search Committee has asked the Richmond College contingent to remain silent about the procedures which led to this presidential appointment or risk violation of an unspoken doctrine of totalitarian secrecy. I am by conscience compelled to violate the chairman's wishes: silence would be tantamount to support of the discriminatory criteria used by the B.H.E.

I am speaking for and by myself, not in the name of the Richmond contingent of the committee nor in the name of the students or faculty of Richmond.

The series of meetings was for me a tremendous educational experience. I received a potent taste of impotency that I shall not forget. My name is on paper as being a member of the Presidential Search Committee which implies that I had a part in the appointment decision. I did not - and neither did any member of the Richmond College delegation. The choice was made solely by the B.H.E. members of the Committee who did not even extend to the Richmond contingent the courtesy of hearing their final opinions about the man now nominated before making the decision. Above and beyond the B.H.E. using representatives of the Richmond College community as a shield to give an appearance of democracy and concern, is their insidious abuse of Richmond College and the Staten Island community.

Richmond College is one of the most important institutions on Staten Island. All agree that the potential for an interaction of considerable impact on both the institution and the S. I. community is present. None can dispute that the President of the college plays an important role in that interaction. The B.H.E.'s contempt for Richmond College and the S. I. community can be

shown by a cursory examination of the Committee activities in its last weeks.

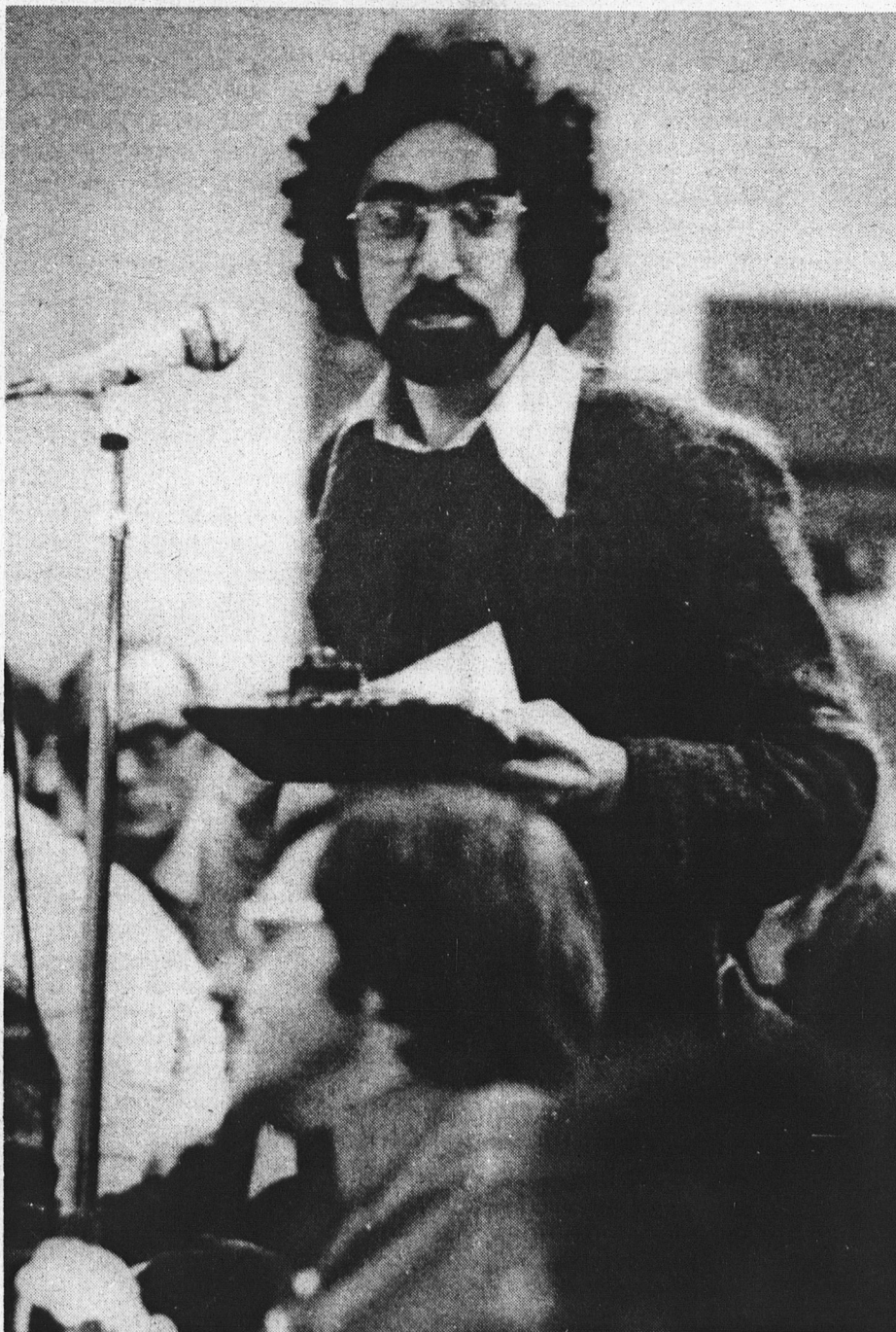
There were 4 candidates who followed the procedure of selection established by the Committee, through the second interview. These were the candidates considered, procedurally at least, closest to nomination. One candidate, known from a discussion of the Committee after his initial interview to be unacceptable to at least half the B.H.E. members present, was asked

back to placate the students and faculty on the Committee. Another of the candidates was requested to return for a second interview to perpetuate the facade that in the CUNY system women are considered equally even for the prestigious office of a college presidency. The other two candidates who returned for second interviews did so not on the merits of their initial interviews but rather because they had the right connections.

It is a sad reflection on the leaders of the CUNY system that for those relatively few hours spent at the conference table they could not separate themselves from their political games long enough to conduct a dignified, above board search leading to a serious responsible selection of a President for Richmond, when the B.H.E. is undoubtedly cognizant of the ramifications the appointment holds for Richmond College and the S. I. community. The travesty is compounded if one can accept the rumors that a primary qualifying factor in the candidate's selection was the possession of an Italian last name. Looking back on my experience, I see nothing to negate but rather words and implications that support such a conclusion.

The appointing of an Italian-American to the position, mentioned informally early on in the series of Committee meetings, was received positively by both the B.H.E. and Richmond College representatives, the reasons being that there is no President of Italian background in the CUNY system and that filling the Presidential void at Richmond College with an Italian not only would rectify that situation but hopefully aid in improving college-community relations. It must be stressed that at no time was this put forth as a criterion by which candidates were to be evaluated but rather generally accepted that if the candidate named on the basis of his or her administrative capacities, educational philosophy and scholastic abilities happened to be of Italian decent, the choice would be all the more gratifying.

As Committee meetings progressed, the issue of an Italian-American President took on greater importance. Though discussions of the inadequacies of other candidates proved to be calm, intelligent critiques, the expression of negative opinions about Italian candidates brought emotionally charged accusations of prejudice from certain members of the Board. Not only was the Richmond contingent subjected to the pointed accusations of prejudice, but we were recipients of the same message delivered on several occasions with subtleness and tact. It rapidly became obvious that the Italian-American issue was growing in importance.



STEVEN STERNS PROPOSING A RESOLUTION TO THE ASSEMBLY  
Photo: D. C. Sheehan

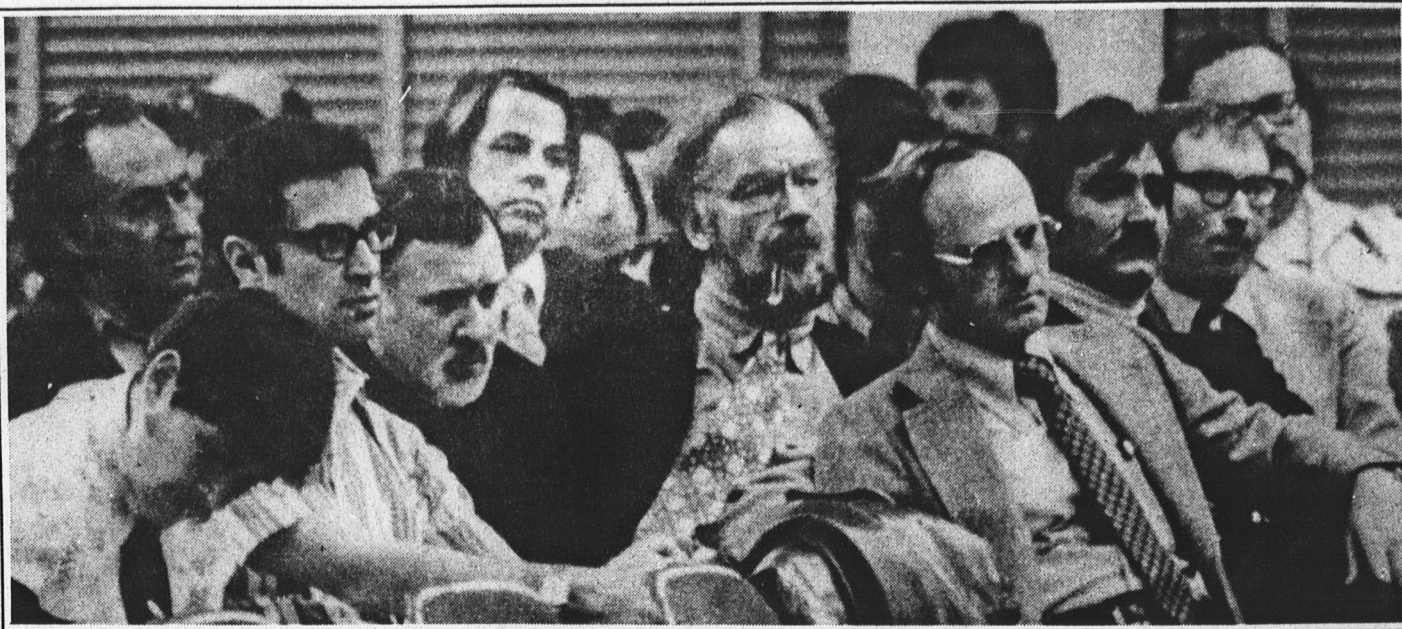
Continued on Page 2

## MAKING OF A PRESIDENT

Continued from Page 1

I believe the accusation that the Richmond contingent was prejudiced is unfounded but non-prejudice is difficult to prove. I do believe however, that a prejudicial bias in favor of Italian-Americans can be shown as a substantive factor in the appointment decision of the B.H.E. members of the committee.

The Board of Higher Education has a policy of "affirmative action" which means that effort is expended to place people of minority groups in positions of prestige throughout the CUNY system. I was told by the Chairman of the Richmond College Presidential Search Committee that the up and coming minority group is the "Italo-Americans" and that we must be "sensitive" to their feelings of being neglected. Combine this with the fact that the issue was raised several times by Board members and that such strong opinions were held by certain Board members that the feelings engendered emotional



RICHMOND COLLEGE ASSEMBLY DEC. 3rd.

Photo: D.C. Sheehan

accusations of prejudice.

Consider that two of the candidates who returned for second interviews, undeniably not on the basis of their initial interviews, returning over the vocal opposition of the Richmond contingent, at the request of B.H.E. members, were both of Italian descent.

Consider the rumor that the nomination made by the Board was a political appointment. Granted, many rumors are of dubious origin. I can only say that I trust the source who revealed

this to me, that the climate the Committee meetings only lends support to such a rumor, that the members of the B.H.E. are all political appointees who know from where their power comes and that the Italian-Americans are a very viable political group, especially on Staten Island.

Consider the coincidence that the man chosen by the B.H.E. as best fulfilling the criteria by which the candidates were judged also just happens to be an Italian.

I realize that these words may make the new President's job more difficult but it is far more important that the community of Richmond be made aware that it has been used as a pawn in the B.H.E.'s political game of affirmative action. As the criteria for the selection of administrators is lowered, it stands to reason that the college must follow suit.

Sincerely,

Janet McLeod

## NEW IMPROVED MASTER PLAN

By DEBBIE FORD

Dr. David Dill, Special Assistant to the President for Academic Planning, stated in an interview that one reason a new Master Plan is needed for Richmond College is that the original Academic Master plan formulated before the college began functioning requires revision "now that we have 5 or 6 years experience in the college" and a faculty which is now familiar with the needs of the college and the students. He said that "at the outset it was cloudy about

what the college was supposed to be... Things are a bit hazy." It is a mandate that all C.U.N.Y. colleges have a Master Plan.

The Outside Evaluation Team (Oct. 1-4, 1972), set up by C.U.N.Y., decided that a new Master Plan was necessary for Richmond and such was implemented by President Touster. Dr. Dill said that the basis of the present Master Plan process is to "get groups to seriously consider criticisms directed at the college." Dr. Ira Blei, Acting Dean for Administrative Planning, stated in a report on the Master Plan that many of the questions to

be considered by the Task Forces "have been identified in the Self-Study." Dr. Dill said that evaluations, such as the Self-Study, Outside Evaluation, and Middle States States Evaluation, raised questions but left the solutions to the college.

The Task Forces will make proposals on their findings which will be published in public reports, presented for college-wide discussion, and finally presented to the Richmond College Assembly for discussion of the acceptability of the final Master Plan. Such a method of disclosure should permit increased involvement and feedback on the part of the college community. It should especially provide the opportunity to consider students' opinions whose participation in the formal sessions is very slight.

Two groups of Task Forces have been established. The first, according to Dr. Blei's report, will correspond "to the disciplinary areas reflected in our divisional structure." This group consists of Task Forces in the areas of Humanities, Social Sciences, Sciences, and Teacher Education. According to Dr. Dill, these Task Forces will "question orientation and programmatic function" in the various areas.

Dr. Dill said that each program Task Force includes faculty members from other programs and that each program has an impact on the college as a whole. The diverse membership has led to the asking of general questions about the college as a whole. This is especially important, according to Dr. Dill, as each program involves "cross-the-college involvement" of

students and faculty. There may also be a "direct correlation" between programs such as Teacher Education and Humanities which requires a "need for cooperation." As the question may arise concerning of a different department to make decisions concerning another department, Dr. Dill said that the same philosophic argument applies here as applies to students. That is, "students may not be expert but are involved."

The second group, according to Dr. Blei's report, "has been called on to address important educational issues that are common to all the program areas, and the resolution of which will influence the character of the College." Included in this group is the New Programs and Professions Task Force which will consider "an over-all view of evolving professions and directions in higher education, especially as relates to the role of an upper division college."

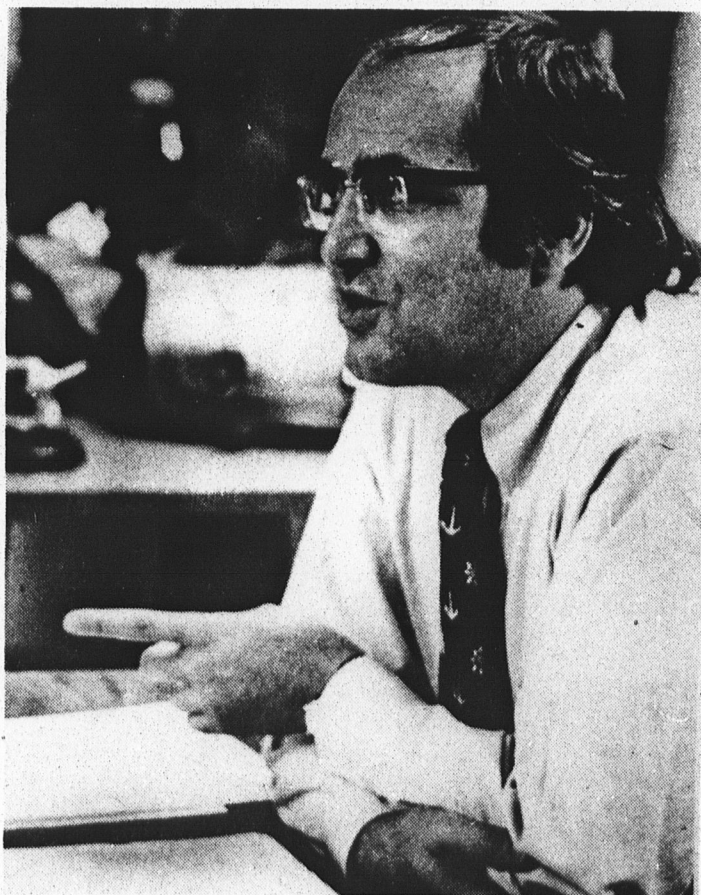
The Student Admissions and Advisement Task Force will deal with "recruitment and admissions of students (e.g., at what levels or kinds of prior college work or other life experience? whether or how to certify non-academic experience? what commitment; commitment to be made to continuing education.)" This force will also be concerned with what sort of advisement is needed and how it should be organized.

The Basic Skills Force will consider "poor preparation of students for college work in

reading, writing and mathematical skills." Finally, a Pilot Baccalaureate Task Force has been set up to attempt a definition of the nature of a baccalaureate degree. Also, this Force will investigate the development of a "B.A.-M.A. 'continuum'" which has been mandated by the Chancellor.

In January, a report comprising the recommendations of all the Task Forces will be put together and discussed. This will also allow for a working out of conflicts between the various Task Forces. The Task Forces will disband in February but will be asked to contribute to the efforts of a Facilities Planner who will be hired to design the internal space of the new campus. Dr. Dill stated that information on the academic plan of the college will be necessary for the development of the plan of the new campus.

Dr. Dill conceives the Master Plan Process to be future-orientated in part. He named "basis of growth" as one of the priorities of the Process. The enlargement or shrinking of existing programs and the development of new ones must be considered. He feels these are special concerns of the planned move to South Beach. Although one of the Task Forces said that they were working on the assumption that their recommendations will only be made in the light of Richmond remaining in St. George, Dr. Dill believes that priorities of growth will probably remain the same if the college remains here or moves.



President Touster

Photo: Larry Greenfield



President Touster Addressing The Richmond College Assembly  
Photo: D.C. Sheehan

## Student Life Committee Pushes For Day Care Center

On Dec. 10, the Student Life Committee met for the first time of the new year and set up a sub-committee to ascertain the enactment of a day care center at Richmond College. The sub-committee chaired by Patrick T. Sheridan was formed to formulate an approach to what the Student Life Committee considered a prime objective to be pursued during their term of office.

In the very near future a report will be submitted to the Richmond College Community by the Student Life Committee concerning this approach and feasibility of a Day Care Center at Richmond. The sub-committee will under the auspices of the full committee be responsible for ascertaining the need for space and funds as well as attempting to determine and influence opinion at the Richmond College Community and it is hoped that a pilot program can be started early, in the Spring '74 term.

It is the Student Life Committee desire that help from the Richmond College Community will be afforded to them and that the task not be worked upon in a vacuum. Various individuals and organizations in the College and in the community at large will be approached for aid and advice in the pursuit of constructing a day care center within the confines of Richmond College. Day care at Richmond is construed to be in the interest of the Richmond College Community at large and therefore the full resources of the committee will be brought to bear upon enactment at Richmond in the near future.

## Richmond College Assembly Recognize Teacher Evaluation

For the first time in the history of Richmond College, the students' ability to judge the teaching effectiveness of their instructors is being considered as a serious source of information to the College Personnel and Budget Committee. We have just put two of our students, Paul Nelson and Eileen Hamlet, on this most important Committee. And we are now in the process of setting up for our students an organized method of teacher evaluation . . .

Evaluation to carry out the task of evaluation on a college-wide basis. This Committee will, in no way whatsoever, do any evaluating of instructors at the College — its functions are, rather, to design a feasible evaluation process and to oversee its carrying-out. This Standing Committee has been approved by the faculty and student members of the Richmond College Assembly, and it will appear in our "Interim Governance Charter" as follows:

### A. Function:

1. To provide for systematic evaluation of the quality of instruction in the College by organizing a process by which all of the students in every Richmond College course are given the opportunity to evaluate its instructor every semester.

2. To compile and make the results of this evaluation available in the Library and to the unit, divisional and College Personnel and Budget Committees.

### B. Membership:

1. The two student members of the College Personnel and Budget Committee.

2. Five students, no more than three from any unit of the College.

3. Three faculty members

from different units of the College.

4. Faculty members will be elected by the faculty members of the Assembly in April. The five student members of the committee will be elected by the student body in April in an election conducted by Student Government with the assistance of the Office of The Dean of Students. All terms shall be one year, and vacancies shall be filled by election.

C. The College shall provide reasonable resources necessary for the work of the committee.

D. When the committee is initially approved, election shall be held immediately with the five students elected by mail ballot from the entire student body.

Now comes the plea. We need you to work on this Committee. Much preliminary research has been done by an ad-hoc committee (consisting of myself, Freema Schnitzer, Paul Nelson, and Prof. Lanny Fields), who reviewed evaluation forms of other colleges and have suggested some basic categories and considerations. The "dirty work" of the Committee (data-processing, distribution, etc.) will be delegated to the "reasonable resources" that the College will provide. The

Committee will, as mentioned earlier, basically be responsible for producing an evaluation form and supervising an honest system.

This is predominantly a student committee. We have the power — now who'll take on the responsibility? We need five more students to serve on the Teaching Evaluation Committee. (P&B members Nelson and Hamlet are automatically on this Committee.) Membership also entitles you to full voting rights as a member of the Faculty-Student Assembly. Oh, the fun never ends!!

If you are interested, nominate yourself as a candidate or nominate another student who would be willing to serve. Please submit these names (in person or by mail) to Dorothy McCormick's office (Dean of Students) on the fifth floor office of Student Affairs, 130 Stuyvesant Place. Please do so by January Tenth.

We will then proceed with elections of these candidates by a mail ballot during the winter recess. Please vote and return these ballots - realize the seriousness that the evaluation process will have once this Committee gets rolling. Faculty members to this Committee will also be elected by mail ballot in January.

**Feiffer**

EVERY YEAR I'M DESPONDENT THROUGH THANKSGIVING...



DEPRESSED THROUGH CHRISTMAS...



12-24

SUICIDAL THROUGH NEW YEAR.



© 1972, M.G. FEIFFER

THE ONE LESSON IN LIFE I HOPE I CAN TEACH MY KIDS:



SURVIVE DECEMBER —



AND YOU CAN SURVIVE ANYTHING.



Publishers-Hall Syndicate



## SPACE ALLOCATIONS

# TELEPHONE COMPANY DISCONNECTED

As you may have noticed, the New York Telephone Co. has packed up, lock, stock, and barrel and vacated the first and fourth floors of 130 Stuyvesant Place. While we are sorry to see such good neighbors move, we may be consoled by Richmond's acquisition of this space and the anticipation of having two brand new floors at 120 Stuyvesant Pl., now under construction, to romp in. If you are graduating before the fall, 1974, your spirits may be dampened because the space won't be ready for use until then. (Tough luck).

But there are some real goodies in store. The first floor of 130 Stuyvesant Pl. will contain two audio-visual classrooms, a computer classroom, and a 196 seat lecture hall complete with waiting lounge, ticket booth (now that's class), projection and storage room, and stage. This plan includes the renovation of the present lecture hall (Old Bookstore).

The fourth floor plan for 130 Stuyvesant Pl. includes additional classrooms; two large classrooms, four small ones, and one seminar room. Science faculty offices will be located here, complete with conference room and faculty lounge. Also residing here will be the Student Government office, the yearbook office, and the newspaper. But "most important," a game room, student

lounge, and reading room are planned. A pool and ping pong table will liven up (?) the game room plus, as an added attraction, a colored T.V. in the student lounge.

The space at 120 Stuyvesant Pl., two floors consists of 17,350 square feet of space (but actually 2,602 square feet are corridors). As far as the first floor plan is concerned, we are "stuck", to use the term of Kenneth Klindtworth, Coordinator of Campus Planning, with the plan of S.I.C.C. who were originally supposed to occupy the space. It will consist of 20 classrooms of an occupancy of 20-60 seats. Those rooms with 60 seats are designated as "Lecture Halls".

The second floor is chock full of new surprises. Among these are art studios and offices, film and sculpture studios, a film screening room and a darkroom. Included in this will be a music practice rooms, Piano and harpsichord studios, and tape storage and editing space. The purchasing, accounting, and payroll departments will be located here. The present "Fifth Floor" will then be turned over to the Dean of Student Affairs.

The plans for the use of additional space were decided upon by the President's Advisory Committee on Space

Needs and Utilization. This committee consisted of administrative officials, teaching faculty, composed of representatives from the various departments, service units (Library, Educational Media and Television, Registration and Admittance), a union (Professional Staff Congress, Local 384), and students.

We are renting the space at 120 Stuyvesant Pl. as bureaucratic procedure makes ownership impracticable as far as immediacy is concerned. We also rent 130 Stuyvesant Pl. under terms which provide, after a certain period of leasing, for the ownership of the building by C.U.N.Y.

### SPECIAL OF THE MONTH!

#### MAGNETO HAND CRANK PHONE

• Attractive light oak compact case, hand crank generator signal type with dry cell talking current. Use on rural phone line, for house-to-barn, extension phone, etc. Latest craze is "old fashioned phone" in den or party room.  
• Will work on modern systems. An outstanding buy! Wt. 16 lbs. List \$26.50.  
ALE ..... \$8.97 FOB



## Roving Photographer

Donna Dietrich

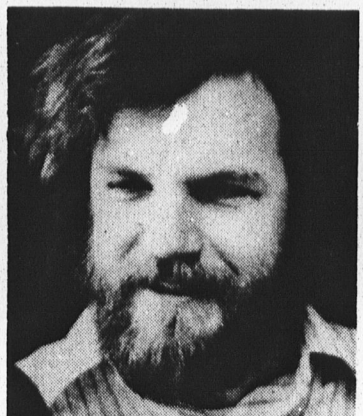
## Q: WHAT ARE YOUR SEXUAL FANTASIES



Ken Klindtworth, Coordinator of Campus Planning. "Taking several of the more endowed ladies that I observe in the cafeteria, and sailing under the Verrazano bridge, never to return. That's my daytime fantasy, as for nighttime: I'd like to be quality control coordinator in the local whorehouse."



Paul Schmidt, Assistant to the President. "I have none. My wife satisfies me completely. I take sex as sacred."



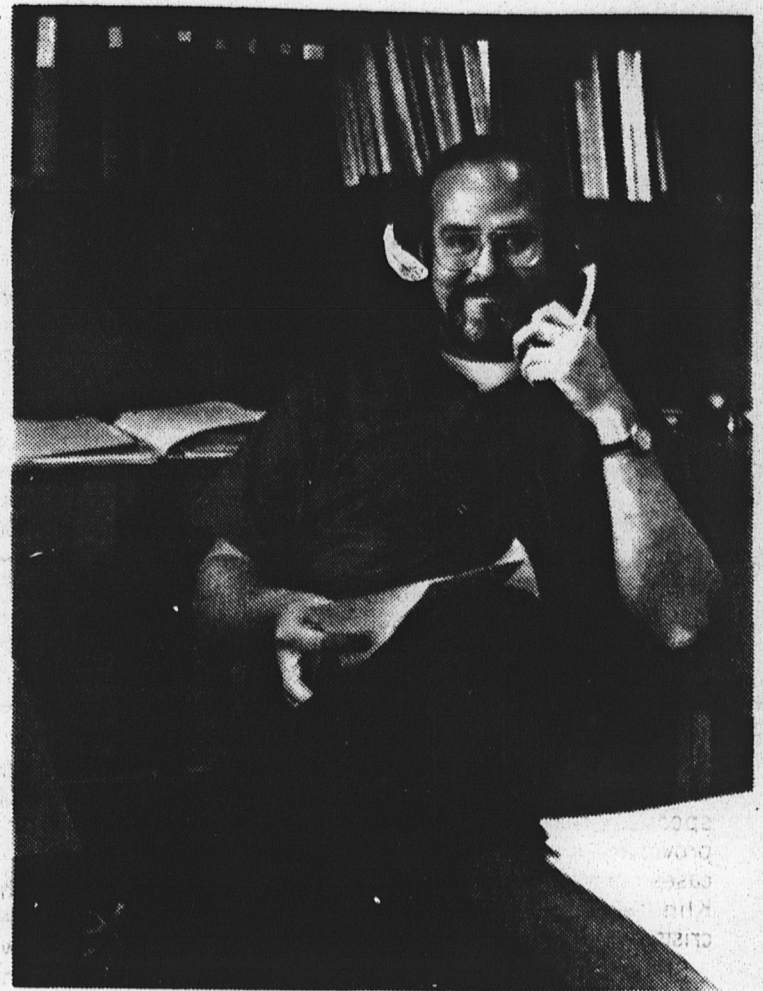
Ed Merritt, Executive Assistant to Dean of Students. "That purple flower over there" (pointing to a purple passion plant).



Sam Hefny, Television Coordinator. "An eternal orgy in a jungle."



George Odian, Dean of Faculties. "I don't have any sexual fantasies, I'm too old."



Photo; D.C. Sheehan

## From The Registrar

Now that we've been promised a freeze on the class listings for spring, we can go ahead with mail registration. Registration materials went out on Friday, December 7, to all matriculated students who were not in the preferential registration mailing earlier. All undergraduates and all matriculated graduates should now have their registration materials. The deadline for the return of mail registration forms has been extended to December 19. You can save yourself grief by following instructions that accompany the registration forms.

The graduate non-matrics seem to be the main victims of the hold on registration, but we will try to accommodate them by mail sometime in January, if the College is not shut down by the fuel shortage at that time.

Students who do not register by mail but still wish to attend the spring term may go to the regular registration on Monday, January 28, but they risk running into closed courses.

The Schedule of Classes booklet will be out in early January. It will be primarily for use by students who do not register by mail, but since it will contain a lot of helpful information, you may wish to stop by the office to pick up a copy. We always list courses in the Schedule of Classes booklet will be out in early January. It will be primarily for use by students who do not register by mail, but since it will contain a lot of useful information, you may wish to stop by the office to pick up a copy. We always list courses in the Schedule by discipline, but since students usually register with day and time consideration foremost in mind, it would seem to be more useful to list them also in the order in which they are given during the week. Thus, the first group listed in the Schedule would be the courses offered at 9:20 A.M. On Mondays & Wednesdays, the next group listed would be the 11:10 classes on MW, etc.; after the MW's we would list the TTH's beginning with 9:20 a.m. until we end with the Friday evening courses. So, for example, if you're looking for a TTH course that meets at 9:20 a.m., you would look in the Section entitled "Tues8Thurs 9:20 a.m. courses." This may not seem terribly sound educationally, but since it is the way most students register for their course, it would seem to be useful. We'll have to think more about this.

Once again, please follow carefully the instructions for mail registration, for once you've handed in the forms, you will receive a "Sorry, Charlie" letter, if you've failed to get your advisor's signature or made some other error that prevents us from processing them. And if you wish to make changes in your mail registration, you will have to wait until January 21 when we're having a free change of program day.

When we tried mail registration a year ago, one of its faults was that students wanted to come in to chat about their registration with the staff in the Registrar's Office, and they damn near halted all other work there for 3 weeks. So, for this reason we have to ask you not to bug us; we don't know what courses are still open. If this produces too much anxiety for you, wait to register until January 28 if you wish, but please don't bug our staff, for they don't know anything! And remember to see your friendly faculty advisers for their approval of your program; this is mandatory for undergraduates and highly desirable for graduates.

Have a good Winter Recess, conserve energy, and we'll see you in 1974!

Ray Hulsey

# Richmond College Assembly December 12

By John Caprice

On 12-10 at 2:40 p.m. a Richmond College Assembly meeting was held in the old bookstore. The meeting opened with the presidential report; he stated that C.U.N.Y. has established a fuel crisis program (someone finally spilled the beans) As a result of this plan, the temperature of the school will finally be lowered. The entire school will be without heat from 12-21—1-2-74. In cases where a constant temp. is mandatory special provisions will be provided. Any other special cases are referred to Mr. Klindtworth, the appointed crisis coordinator.

Still suffering from the shock of the President's opening remarks, a motion was passed that allowed Ms. Levine the choice of two unwilling faculty members and one eager student to accompany her in order to present the resolution, passed in the previous meeting of the assembly, to the Board of Higher Education's Search Committee.

Adding insult to injury, a

report concerning the teacher evaluation Committee was presented to the assembly. The committee will consist of 5 students and 3 faculty members. The entire cost of teacher evaluations was estimated to be in the ballpark figure of from \$5,000-10,000. This figure was not considered a reasonable expense by the majority of the members present. The committee will be established this committee is a mandatory committee provided for by C.U.N.Y.

Part-time instructors will also get a voice in the assembly in the future, most likely by a mail ballot.

The real windup of the meeting came with a passed motion to accept the two students elected to the P. and B. committee by ten students of the assembly prior to the commencement of the assembly. Some faculty members expressed mixed dismay and joy that the meeting would soon come to a timely end.

A quorum vote was called for and being one short of a quorum the meeting came to a close.

## MINUTES FROM

RCA Meeting  
November 29, 1973 (Special Meeting)

Members in attendance:

Ed Merritt  
Al Gibbs (Rep. June Mosca)  
Andrew Rison  
Paula Sullivan (Rep. Morris Weitz).  
Patricia McGinis  
Paul N. Nelson  
George M. Spanakos (Attorney)  
Eileen Hamlet  
Anthony Haynes  
Freema Schnitzer (Rep. Ricky Veit)  
John Hyman (Rep. Brenda Faust)  
Pablo Suarez

I. Agenda:

1. Approval of Mr. Spanakos as RCA lawyer
2. Increase of Cafeteria Prices.
3. Letter of Richmond College President
4. RCA Procedures
5. Gestetner Contract
6. Loans

II. Mr. Spanakos explained the role he would perform as the RCA lawyer. It was stated that he would act as the RCA attorney as well as a legal counselor for the Richmond College student population. It was suggested that he would work for \$30.00 per hr. a week at

four hours a day. The motion was voted upon with an amendment that stated that Mr. Spanakos would be subject to a one-month period, then it would be decided whether to keep the above hours or reduce them. It was passed 8 pro, 0 con, and 2 abstentions.

III. Mr. Weitz made the suggestion that the price increases were valid for the cafeteria and made the recommendation that RCA accept Mr. Gilbert's proposal. Mr. Gilbert then stated that there is no way in which the cafeteria could possibly survive in its present state.

It was decided by the RCA that this matter would be continued at the 12-6-73 meeting until the RCA members had a chance to check it out. It was also stated that a committee of McCollin, Hynes, Robert Turner would work with Mr. Gilbert to decide on what was to be done with the matter. The motion was passed by 8 pro, 1 con and no abstentions.

IV. Ms. Freema Schnitzer spoke on behalf of the Presidential Search Committee for the college. She informed the RCA members that they were told to keep the matter quiet. The Board of Higher

Education told this committee that they had picked the Richmond College president and they had to accept their decision. A motion was passed to send a letter to the Chancellor to protest the Board of Higher Education's unethical procedures by 5 pros, 2 con and 2 abstentions.

V. The minutes for 11-8-73 and 11-16-73 were approved with an addition of the SICC letter unanimously.

VI. A committee was set up to work with Mr. Spanakos (consisting of Eileen, Pablo, Anthony) in finding out if the one-third split of student funds is legal or illegal.

VII. Gestetner Contract was tabled and was to be dealt with at the next meeting.

VIII. Karl Neal spoke for the sports club. He explained that mats were needed so as to practice the Martial Arts. He also added that an instructor was to be paid. The motion was passed by 6 pro and 2 abstained. (\$890.00 — mats; \$525.00— Moses Powell, instructor. Total \$915.00).

IX. Loans for Paul Nelson, Al Gibbs and John Hyman were passed unanimously:

Paul \$225.00, Al \$100.00, John \$75.00.

# Richmond College Assembly December 3

By John Caprice

On Dec. 3, at 2:40 p.m., a special meeting of the Richmond College assembly was held in reaction to the Board of Higher Education's appointment of a new President for Richmond College, without regard to the position of the R.C. Representatives to that committee.

The major objections to the Board's actions were; (1) that the R.C. Reps. were not consulted of the final stage of deliberations, despite the fact that they had been assured that no decision would be made prior to a review of the final slate of candidates, (2). Only 3 out of 7 B.H.E. members appeared to inform the R.C. Reps. that they had nominated a candidate, so there was no

opportunity to engage in a final discussion with the Chancellor, the Chairman or the entire Board. (3). The Board was probably aware of the opposition to the appointee. (4) The Board acted in bad faith by not having a final discussion of the candidate prior to his appointment.

It was noted that if the appointee were acceptable, there would be little opposition to the Board's action. In fact, the candidate was not on R.C.'s list for second interview.

The R.C. Reps. then suggested three possible resolutions:

1. "The Richmond College Assembly censures the seven Board members of the R.C. Presential Search Committee for acting arbitrarily and

capriciously in nominating a candidate without the advice and consultation of the Richmond College faculty and student representatives."

2. "The R.C. assembly urges the Board of Higher Education to permit the faculty and student representatives of the R.C. Presential Search Committee to appear before the full Board."

3. "The R.C. assembly recommends that a University-wide Commission of Faculty and Students be established to determine the manner in which faculty-student participation in Presential Search Committees can be made meaningful. We further recommend that, until such a commission reports its findings, students and faculty of City University do not participate in Presential Search Committees."

MS. Sandi Cooper then introduced a resolution from the

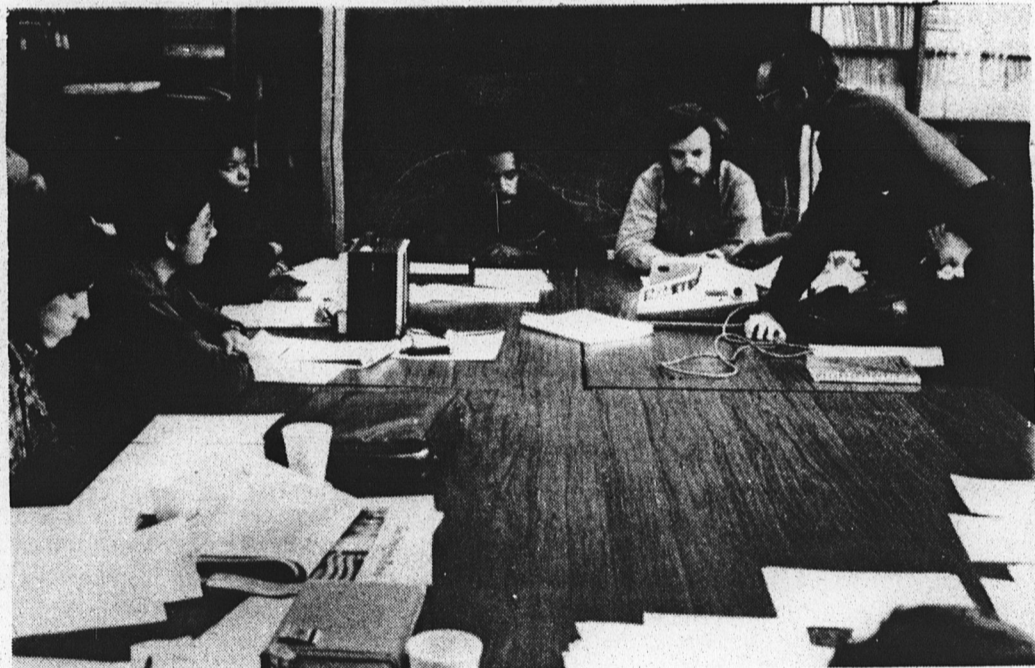
floor:

**RESOLVED:** That the R.C. Assembly at its special meeting of Dec. 3, deplors the decision of the Board of Higher Education members of the Pres. Search Comm. to ignore and bypass the recommendations of the delegation from Richmond College in the selection of a new President. We are outraged at the high

handed procedures which have made a mockery of faculty-student consultation. MS. Levine moved to add:

We call on the Board to extend the process of selection and to delay the decision on a new Pres. until there has been time for a careful search.

The resolution passed 106 to 21.



Ted Pawluk demonstrating calculators to members of RCA; left to right: Ricky Veit, Pablo Suarez, Eileen Hamlet, Anthony Haynes, and Ed Merritt.

Photo: D. C. Sheehan

**STATEN-ISLAND**



**ELECTRIC  
HAIR  
COMPANY**

creative haircutting

**447-8245**

men & women

11-7 daily      100 STUYVESANT PL.

**SPECIAL PRE-CHRISTMAS**

STUDENT RUSH! \$5

Dec. 11 thru 21 (Exc. Sat. & Sun.)  
A limited number of seats made possible by benefactor. Call Box Off. 4 p.m. day of performance for availability.

EXCELLENT SEATS AT—  
"PURE MAGIC! TREMENDOUS!  
A DELIGHT!"—Clive Barnes, N.Y. Times

RAISIN

*The New Musical*

46th ST. THEA. 226 West 46 St. N.Y., N.Y. 10036 (212) CI 6-4271

## South Beach Campus Plans Onward

R. M. Why do you want to move to South Beach?

K. K. Why?

R. M. Yeah!

K. K. Well for one thing we could expand our facilities to the size that would be required to service our students correctly. Another reason is that we have a hundred and ten acres we own (in South Beach).

R. M. If the space possibilities were in Saint George could you see keeping the campus in Saint George?

K. K. Well yes and no...

R. M.... Hm... Hm...

K. K. And I'll tell you why. The reason being that, you look at it from a planner's point of view, Saint George is a dead area—it's dying, I would say in the next twenty years it would be wiped out as a transportation area. That's the only reason it exists.

R. M. Why do you say that?

K. K. Well if you examine S. I. as a whole and examine the growth and look at the way it is growing you'll see that the whole South Shore is where the expansion is. How do you get to the Southern end? You get there by the rapid transit, that's the way transportation is gonna go—through rapid transit... if you project it further you'd see that any possible subway connection would most likely be somewhere in the neighborhood of the Verrazano Bridge... it's logical that they would connect into the Brooklyn subway system, because it's the shortest.

R. M. Yeah well I was talking to some people at City Planning the other day and

K. K. That's where you made your first mistake.

R. M. Well I don't know

K. K. Heh, heh, heh, because I'll tell you they go through there like about once a year.

R. M. Well anyhow what they said was that Saint George is being planned as a small scale urban center, and about a tunnel going through at the (Verrazano) Bridge, they said the public transportation lines were already overcrowded, and that there was no plan (for a tunnel); but the possibility was more likely through Bayonne than South Beach.

K. K. Okay that's even more of a reason.

R. M. Bayonne??? I more of a reason—why?

K. K. Because then you'd be going into the heartland of Staten Island, and that would be connecting into the Path...

R. M. Ahem Ahem

K. K. Well you have to look at it from another point of view,...

And this is indeed what Mr. Klindtworth does—look at the matter from another point of view, sometimes two views at the same time. After he explained that Saint George was dying he went on to say later that Saint George would be too expensive a neighborhood for students in the future, and that Saint George will be high density in the future, no room to expand.

After he paints a picture of South Beach as a future urban area he explains that it was once a prosperous and growing neighborhood but died out. So which is the dying area? For some reason he believes that the ferry will be out of service in the next twenty years, the City Planning Office in Saint George found this to be simply untrue. Mr. Klindtworth also mentioned that some of the people at City Planning in Saint George "smoke something" and therefore know not of which they speak.

City Planning on the other hand is working solely on the South Richmond area and Saint George because nothing is happening in South Beach.

This is partially because South Beach floods all the way to Hylan Blvd. on occasion. Mr. Klindtworth acknowledges that, but says high rise apartments will go up in the future, because only a high rise could afford to raise the level of the land above flood tides.



Photo: Donna Dietrich

Between high rise apartments and the Gateway Park (the whole shorefront a national park) South Beach will be "the place to live" he spoke glowingly about the possibility of services like "barber shop, beauty parlour, and gas stations."

Mr. Klindtworth agreed that City University should respond to the urban need, rather than the suburban. He claims that South Beach is the future urban and transportation center on Staten Island.

When I mentioned that Richmond College presently had the advantage of strong continuity with the neighborhood, low income housing, and most government services Mr. Klindtworth agreed these were good things to have near a college. The architect then mentioned that the dormitories necessary to such a campus had been unfortunately dropped, and that such housing is necessary to low income students.

When I told him I felt that the high rise apartments he described would not be available to low income students, Mr. Klindtworth agreed "Oh Yeah—definitely." He immediately covered himself by making reference to a twenty-acre low income state housing development going up next door.

I find Mr. Klindtworth's public transportation tunnel unfounded, so does the City Planning Office. I find Mr. Klindtworth's projected plan of South Beach unfounded. At present the area is zoned for one and two family houses, not high rises. Admittedly the campus architect's plans are a possibility, but those people at City Planning (possibly the ones that smoke something) feel that schematic anticipation is no way to plan a college, I agree. We should work with what is now Staten Island's high density area, rather than dragging ourselves out to the safe suburbs where we could sprawl indefinitely.

The South Beach Campus has been a foregone conclusion since Richmond's inception and like religious dogma becomes less reasonable with age. My last question is "Mr. Klindtworth, what do you smoke in your pipe?"

between them (history, politics and economics in one, sociology, psychology and anthropology in the other).

In any event, the next time, your reporter should try harder to find out who is doing the talking.

Yours sincerely,

The "absent" Steve Stearns

Dear "absent" Steve Stearns:

Sorry for the mistake - my notes confused your name with Jim Sturm's. Anyway, I'll never figure out why people use their absence for letting their non-presence be known.

Sincerely,

The "present" M. Paladino



To the Editor of the Richmond Times

Dear Editor:

Some people thought I was being sarcastic when I suggested in my piece on Richmond's response to the energy crisis that we need summer clothes to work in the office. When the maintenance men came to regulate our thermostat, it was set on 85 degrees. My complaints about the excess heat over the years have met with the response that it takes a lot of heat down here to get it up to the ladies who are freezing on the 9th floor. I wonder what their thermostat was set on?

The Richmond Times seems much more oriented toward Richmond College news under your editorship, a policy I have frequently recommended to your predecessors with no great success. Congratulations, and keep up the good work.

Regards,  
Ray Hulsey

FACETIAE

To The Editor:

In my three years of undergraduate and graduate work at Richmond College, I have observed several behavioral modes that appear to be characteristic of many members of this institution. Assuming that these patterns of behavior are desirable, I am presenting a list of guidelines for those students who would

### ED. NOTE

All Letters to Editor must be signed. Names withheld on request.

## Almost President Volpe

Timing is the essence of strategy, the essence of winning. From business to lovers, if you don't have timing you don't have it.

On this note and with timing in mind, the B.H.E. decision to appoint Edmund Volpe should be scrutinized. From the position of effective student anything the timing with which Volpe was named president is brilliant. Between term papers and Christmas vacation, the vast majority of students are too busy to leave their desks or too anxious to go on vacation just right now.

The BHE, in the midst of its death rattles, has managed this judicious choice two weeks before they fade away. Meanwhile the Richmond College Assembly has managed to tie its shoe laces together in a candy-assed resolution to respectfully petition the B.H.E. for a stay of execution. Well if the BHE doesn't care about six representatives, I doubt if it will care about the two coming from the Richmond College Assembly; but that's the way faculty does things (yeah, yeah, job security, I know). Larry Nachman, member presidential search committee, is infuriated for a week and then turns around one hundred and eighty degrees to an "I'll defend to the death your right to step on my face" attitude towards the B.H.E. and Volpe.

Well if we're interested in doing something about this mid-mortum decision of the B.H.E. we simply can't pull our punches, if we must stop covering our asses for just a minute, stop playing "academic freedom" with the BHE and figure which side of the issue we're on. To those who are shy of offending Mr. Volpe's sensibilities, kindly remember that the B.H.E. suffered no such anxiety pangs when dealing with the Richmond College contingent. Of course, if you're frightened, that's another matter.

## LETTERS

### Absentia Crisis

December 3, 1973

Editor

Richmond Times

In your story, "Social Science Comes Together," you say "Steve Stearns pushed for an at-large election." In fact Steve

Stearns deliberately absented himself from the meeting because he disapproves profoundly of reunifying the Social Science Division. He has been trying to convince this college for several years to abandon flogging a dead horse and create two divisions with a reasonable division of curricular responsibilities

## RICHMOND TIMES

editorial board:  
editor-in-chief  
managing editor  
news editor  
women's editor  
copy editor  
associate editor  
graphics editor  
photography  
secretary



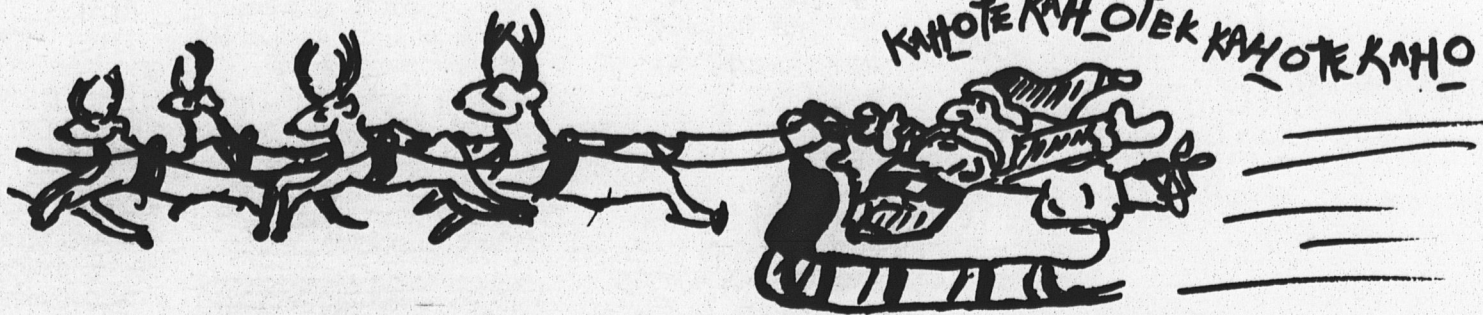
Bob Millman  
D.C. Sheehan  
Debbie Ford  
Laura Hobbs  
Madeline Paladino  
Paul Nelson  
Keith Becker  
D.C. Sheehan  
Madeline Paladino

staff  
Pablo Suarez, Joe Caputi, Deia Capella, Diana Morris,  
Donna Dietrich, John Caprice, Sandy Carles, Eileen Odell

contributors:

Janet McCloud, Ray Hulsey, Lawrence Isler, Andrea Jay.

The Richmond Times is roughly a fortnightly newspaper and is published by and for the students of Richmond College, located at 130 Stuyvesant Place, Staten Island, New York 10301. The opinions expressed in this newspaper are those of the individual writers and do not necessarily reflect those of the editorial board or the college. Telephone: (212) 448-6141. Circulation: 3000.



JJC

like to become real "Richmondites."

1. A Richmondite is quick to express his belief in personal freedom and to strengthen his beliefs, he will not allow (by any means necessary) an opponent to voice contrary ideas. **CONSISTENCY.**

2. A Richmondite is concerned with individual's rights. He purposely ignores "no smoking" signs and the wishes of non-smokers so that everyone in the classroom may inhale his potent smoke. **SENSITIVITY.**

3. A Richmondite is fully liberated. He can draw on the sidewalk with chalk. He can erect posters of sex organs without fear of outside censorship. He can openly and proudly proclaim and glorify his desire to relate (sexually) with members of his own sex. **EXCITEMENT.**

4. A Richmondite is non-competative. He does not have to worry about letter grades and maintaining a C average. He has more time to do more relevant things (like finger-painting, soliciting, smoking, etc.). **CHALLENGING.**

5. A Richmondite is a sociable person. He maintains a close relationship with his fellow students, especially on the elevator. **CONSIDERATE.**

6. A Richmondite loves animals. He brings them to class. **HUMANITARIAN.**

7. A Richmondite knows his body. He has explored his inner self. He is especially fond of his (her) "hems" and/or reproductive organs. **AWARENESS.**

I could go on listing similar traits, but I have said enough.

Annon E. Muss

Editors,

Thanks for sensitive Dorlester Woman's Day poesy and Comet Data useful.

mixed nuts,  
Andrew



To the Editor of the Richmond Times:

The time has come to reduce to relative proportion the decision making role and the influence exercised on the life at our college by an oligarchy. The time is long overdue when we, the students who prefer to learn all sides of an argument before manning the barricades, who choose not to flaunt our sexual preferences, and who resent our obstructed freedom to participate in all academic and educational programs offered, sponsored or funded by or at Richmond College, make ourselves heard and finally begin to play our rightful part in all matters pertaining to the student body.

They, the now controlling minority, will play-up our "apathy" in the past for the lack of sufficient student participation in students' affairs and they will argue that the time for protesting our dissatisfaction with the "status quo" was at the recently held elections for the Student Government. However, it is now imperative that it be understood by everyone, once and for all, that it is not apathy which has kept most of us away from the polling booths, but "identity".

We, the "apathetics," cannot identify with the radicals, blatant homosexuals, sycophants and the rest of the clongorous avantgarde whose successful goal has been to alienate those students here basically for a serious education and to dominate the college scene by creating an overbearing radical chic milieu; neither can we identify with a school administration which allows classes and offices to exit for "women only"

or for some other select group. Their existence in the college is wrong and illegal. Yet, not only have the Administration and the faculty allowed them to fountain, but they permit these affronts to our rights to continue.

No wild protests against these preferred groups should be necessary. We expect conspicuous wrongs not only to be righted without vociferous objections, but never to have been put into effect in the first place. If we are to have equality, it must not be a separate and partial one, but down the line all the way. It's obvious that we are being outrageously let down by irresponsible leadership from the top. This is tragic because most of us, having come to college to learn to lead, have found a great scarcity of good guides.

We, the overwhelming majority of students at Richmond, will show more interest and will actively participate in all college functions as soon as we are assured by the Administration and the faculty that one need not be a professed leftist, a screaming homosexual or a sycophant in order to play a "meaningful" role in our elite community.

Peter Silechia



## RIPPED OFF!

The office shared by the Engineering Society and the IEEE (and the now-disbanded Computer Science Club) has, in the last year or so, taken on a new atmosphere. Instead of a formal, once-a-week meeting, we have developed into a fraternal hangout sort of thing, e.g. TV set, free coffee for all interested. We don't bother anybody.

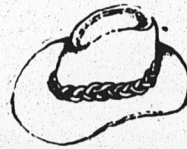
It was decided that a subscription to (horror!) **Playboy** would blend in very well. But when we applied for the \$10, Student Government told us we could not have it because it exploits women (not to

mention us poor schnooks who have to pay for it!) A collection was taken up to pay for it anyway—out of our own pocket money.

The first issue of this evil, sinister magazine arrived on December 10. All the pictures were torn out! The warped, sick iconoclast who did this destroyed not only our personal property, but also undelivered mail. Show yourself if you have the nerve.

In a College community that literally tolerates anything and everything, this kind of censorship is outrageous. Keep your G.D. hands off our mail!!

Signed,  
Engineering Society, IEEE,  
and (in Limbo) Computer Society.



To Student Unions,  
The World Over  
Dear Colleague, Comrade,  
Friend:

It will soon be five years since one of the most shattering events happened in my country - Czechoslovakia: On January 16, 1969, a Philosophy student of the Charles University in Prague set himself afire. A few days later, on January 19, he succumbed to his wounds.

But not before he left a

lasting impression on the consciousness of the entire world. His name, Jan Palach, turned instantly into a symbol of the ultimate in individual opposition to outside pressures, into an absolute measure of human unwillingness to compromise.

Jan Palach sacrificed his life in protest of the humiliation of his country, in protest of its powerlessness when facing an all-powerful and ruthless adversary. Five months previously, in August 1968, troops of five other European countries, under the political

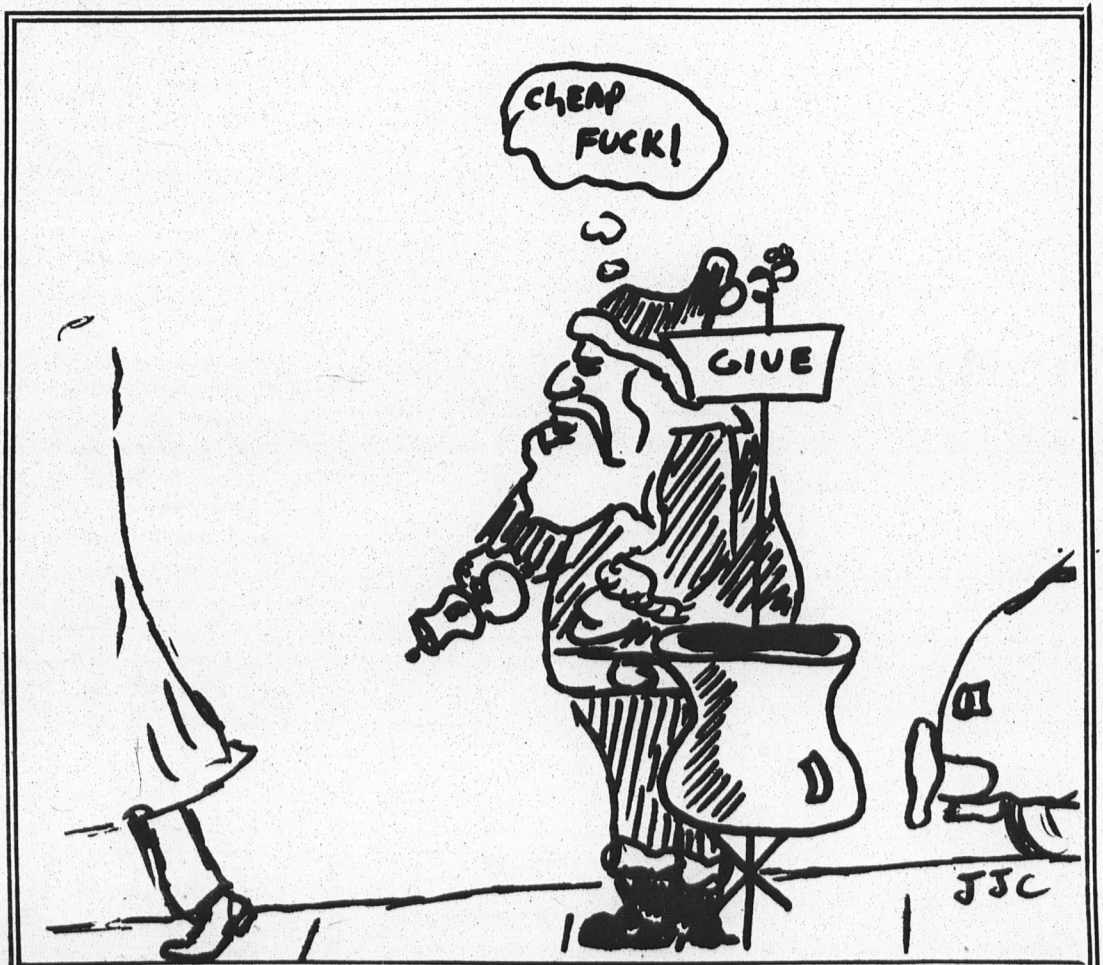
Continued on Page 9

### Guitars Repairs Electric or Acoustic

Fender, Gibson & Guild Pickups repaired.  
\$20.00 ea. plus postage.  
Custom hand-made multiple sound pickups for  
Bass or Guitar or any steel stringed instrument.

Rock Guitar Lessons  
Lawrence P.D. Marzio  
Staten Island, N. Y.  
212-727-0084 or 981-7296

Custom Pickups for any Bass or Guitar any  
sound





# RADIO

Last June the Richmond College Presidential Search Committee was formed and the Board of Higher Education assured the three teachers and three students that were hastily gotten together at the last minute to form the Richmond contingent of the committee, that really truly the BHE wanted Richmond's "assistance" in choosing the next President. Big deal!!! The committee was sworn to secrecy—the only reports that could be brought back to Richmond were that the search was on and candidates were being interviewed. Consequently, no one knew what was going on and the whole thing was kept pretty quiet. Also the only votes on the committee were held by BHE members, which cut off any effective voice the Richmond people had in making any decisions. So when the crunch came down it was the BHE who had the power and they made no bones about using it. They nominated a man who had been previously rejected, unanimously, by the Richmond contingent and announced it as a fait accompli.

Their new program for Richmond could be called, "You take who we give you, whether you like it or not".

So far things are still pretty quiet, the faculty sent a nice, little letter—"protesting" the decision and "requesting" that it be changed. All well and good, but we can "request" until we're blue in the face and the BHE can ignore us and do exactly what they want—they've made that much clear. They've also made it clear that they intend to whittle down the rights students fought for in the past five years, til those rights are right out of existence. The fact that someone like Volpe was nominated and the slick, secretive way in which he was nominated means that last year's cuts were just a taste of what is to come. What we got in the past we got by fighting, the open admissions struggles in 1969 being just one example, so it looks like we've got to start fighting again—not requesting but demanding that Volpe's name be withdrawn and no one be appointed unless, we, the Richmond College community approves a new appointment.

by O'Dell

**The Social Sciences Task Force will hold an open meeting for interested faculty and students to discuss a first draft of their report on Monday, December 17, 1973 in the President's Conference Room - 904 - 10:30-12:30.**

**We welcome your participation and comments.**

## SHANTI FOOD CONSPIRACY

104 WESTERVELT AVE.

NATURAL AND ORGANIC FOODS  
AT PRICES STUDENTS CAN AFFORD

OPEN TUES., WEDS., THURS., FRI. - 4-8; SAT. - 12-6.

**FIRST NEW COMEDY HOUR IN QUARTER OF A CENTURY CREATED BY NATIONAL LAMPOON; PROGRAM TO BE "BROADCAST" FROM "NATIONAL LAMPOON RADIO RANCH"; STUDIO SPECIALLY BUILT ON MADISON AVENUE**

On November 17th, from the newly constructed National Lampoon Radio Ranch, eleven soaring stories above Madison Avenue, the first new comedy program specifically created for radio in a quarter of a century emerged. The program, which marks a return to The Golden Age of Radio, abandoned by most sensible people in 1948, is called The National Lampoon Comedy Hour.

It is carried on various evenings, primarily Saturdays, by approximately 100 radio stations from Coast to Coast including 47 of the top 50 markets in America.

The program is under the creative direction of National Lampoon Editor Michael O'Donoghue and will be written weekly by O'Donoghue and many of his fellow editors including Sean Kelly, Ann Beatts, Douglas Kenney, George W.S. Trow, Henry Beard and others. In addition to writing the show, the humorists will also perform in it.

Unlike any current radio comedy, which is usually "ad lib," The National Lampoon Comedy Hour is written, rehearsed, directed and highly embellished with music, sound the full range of production values of the "old time" radio shows.

It differs, however, in that it will cover much of the same irreverent and contumacious material the magazine is noted for but will do so within the FCC code. The program includes skits, blackouts, parodies on talk and telephone shows, insane news and weather reports and interviews with the famous and infamous.

The studio in which the radio show is being created has been newly built at 635 Madison Avenue by the National Lampoon, at a cost of over \$100,000, to look as much as possible like a typical 1948 radio studio, complete with 1940's furniture dominated by

# CLUB NOTES

## Attica Brigade

**DEMONSTRATION & RALLY - DEC. 15th.**  
**CHAPTER MEETING - WED. AFT. EVERY WEEK 2:30, RM. 540**  
**FARAH LEAFLETING & PICKETLINE - SAT. MORN. at 11:30 at 34th St., MACYS.**  
**MOVIES (TO BE ANNOUNCED)**

## Graduate History Club

The Richmond College Graduate History Club, meeting regularly since last April, has been granted a \$500 budget for the year by the Student Council. Several members, along the way to acquiring this budget, have gotten heavily involved in student government, the school paper, and other such activities. Hopefully this will be a catalyst for graduate students in general.

A Christmas party is planned for the Sunday before Christmas for members and friends: we're open for suggestions on plans for the coming year.

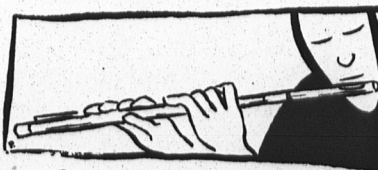
For those who enjoy such things, the major academic holiday convention will be held by the Allied Social Sciences Association, December 27-29, at some posh hotel. Belying its comprehensive title, this is merely an amalgam of some thirteen economics groups, including the American Economics Association. Of some real interest, however, will be the proceedings of the Union of Radical Political Economists, a member of ASSA. This outfit will present papers and workshops on real life: the "crises" in food and energy, economic outlook for the '70's (within the US and internationally), the politics of unemployment, and a special series of workshops by the URPE Task Force Against



Attica Option

the station's ultra-moderne "logo." To enhance the Western feeling of the studio ranch, cactus plants have been transported from the nearest Madison Avenue flower shop. The studio is being designed and decorated by the noted artist, Charles White.

The National Lampoon Radio Hour is a subsidiary of Twenty First Century Communications, Inc., Matty Simmons, Chairman, Leonard Mogel, President. It can be heard on WRVR-FM 7.30 Saturdays.



Racism, dealing with the new wave of racism in economics and the social sciences in general, and its implications and applications in life.

Anyone interested in attending—or anything else relevant—can contact Paul Nelson (273-3510), Mike Fogarty (Room 811), or Phil Harvey (Room 803).



Engineering Society

## Activities

The Christmas party will be held the week of the 17th of December. DATE WILL BE POSTED.

ALL MEETINGS OF THE ENGINEERING SOCIETY ARE CANCELLED UNTIL THE END OF FINALS. THE OFFICE WILL STILL BE OPEN FOR

STUDENT USE DURING EXAM. WEEK. GOOD LUCK!!!

## NOTE:

THE ENGINEERING SOCIETY EXTENDS TO ITS MEMBERS SEASONS GREETINGS AND A HAPPY NEW YEAR.

## FOOD CO-OP

Sundays, 3 p.m. - Yoga with Bill Russo at the Tea House. Proceeds go to Shanti Food Co-op.

Monthly Sundays at 5 p.m. - Orientation meeting for new members. This is an ongoing program. Our membership has increased 20 members over the past two months.

Expanded hours - We are now open, Tuesday - Friday 4-8 p.m., Saturday 12-6 p.m.

Expanded stock that is increasingly suiting the needs of an evergrowing population.

The beginnings of communication with the city-wide co-op system and organic farmer suppliers.

An extensive food and health education program has also been started. For more information call Paul - 447-9232.

**THIS WEEK AT THE TEA HOUSE!** 114 VICTORY BLVD

TUES. Dec. 18 - 7:30 - YOGA with BILL RUSSO

WED. 19th - 8pm - Film - Brando in "BURN" Benefit for Farmworkers Union (Look for notices)

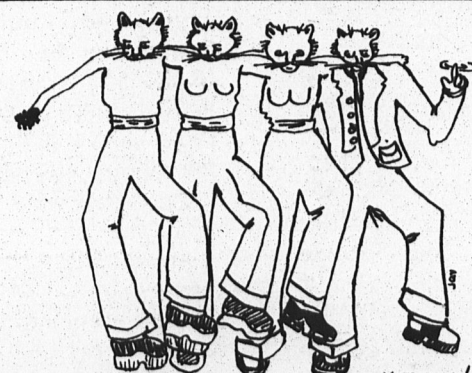
THURS. 20th - 9pm - Co-op Food Buying Club. Wholesale produce (surplus) to non-members.

FRI. 21st - 9pm - Community Entertainment - OPEU MIKE - All welcome, all types - FREE

SAT. 22nd - 9pm - BEV GRANT & the HUMAN CONDITION a smash return perf. of a fine folk-rock group

SUN. 23 - 2:30 - YOGA with BILL RUSSO for SHANTI CO-OP BENEFIT.

**An open meeting to discuss the draft report and recommendations of the Task Force on Basic Skills has been scheduled for Wednesday, December 19th, at 2:45 p.m. in the Student Lounge (3rd floor). All faculty and students are invited to attend.**



FREE SIAMEESE KITTEN/CATZ

FOR → XMAS  
FOR → CHUNKA

AND I'M NOT KITTEN!  
CALL AFTER 10  
448-7473



## Road To Revolution

Paul Nelson, Progressive Labor Party

As Richmond's most action-packed fall semester in years turns into the holiday home-stretch, it's time for some summing up, and some sober plans for the New Year.

The one we'll face on January One—after recovering from the usual future shock and our favorite beverages—promises to be more exciting still.

On the international scene World War 11 continues on the fringes, a number of divorces and realiances among the major empires seems to be in the works, and the junior partners of imperialism—from Argentina to Saudi Arabia—are scurrying about for new advantages as the balance of power shifts daily. On the home front, with the economy crumbling and even the crumbs being taken out of our hides, it looks like the big bosses will have Nixon and his small-time crooks out of the White House in '74, and Rocky himself and the big crooks safely back in, to celebrate the bicentennial of their "Revolution", in '76.

And at Richmond we're getting a good taste of national education policy for the '70s, with financial aid gouged by more than half on the first go-round, and programs being juggled in a "Master Plan" game likely to send education here directly to Hell, without passing Go or collecting two cents. All this topped off with a couple of dubious Christmas presents: the lure of a "new campus" in the upper-middle boondocks some day if we behave in the meanwhile looking the other way as the new Master Plan puts us through the shredder; and "affirmative action" by the lame-duck BHE in foisting a new fearless leader on us—affirming not a broad ethnic policy, but the explicit intention to ram their changes here down our throats.

On the other hand, despite some weaknesses here and there—such as the faculty's disinclination as of yet to come out fighting against this educational lobotomy—some good signs have been popping up around the school. The new student government, by and large, is the most active and serious in years. RCA is uncovering the scandals of years gone by, and reorganizing for the future. Student Council and ICAC are not only meeting regularly (a precedent in itself), but beginning to get some real effectiveness and cooperation from the clubs. And student members on some of the school's committees seem bent as never before on getting some useful action in a number of areas, from Library to Student Life to Curriculum and Instruction. Not to mention the two new committees students are being admitted to for the first time—Student Evaluation of Faculty and

school-wide Personnel and Budget—where we might hope for some precedent-setting shake-ups to take place in the Spring.

This newspaper, likewise, despite a number of wrinkles that still need to be ironed out, has made a definite turnaround, from its bygone days of rock reviews and general nonsense, towards really serving the college community. Aside from our ambition to become the best college paper in the city, we intend in the Spring to put all the pieces together on what's happening at the school—from the president's waste-paper basket to the midnight maintenance crew; from teachers in graduate education who still use Delaney books and have their students play show-and-tell, to brawls for student space on the liberated fourth floor from national campaigns to legitimize racism in the classroom, to local campaigns to defeat racism and turn it around. And we intend in the coming months to tie our use of newsprint into active, school-wide fights around all the issues that affect us. With a lot of help from our friends, it won't be ourselves that suffer from the "energy crisis", but the big shots who are palming it off on us. Let's get some more of that midnight oil burning!

As a final note, it's nice to win—and win we did on the Shockley case. Aside from the effect of the event itself—to put a temporary crimp in the billionaire's movement to build racism on "scientific" foundations in the US and exposing the racism of various "liberal" fronts from Uncle Bill Birenbaum to the Village Voice—the campaign had some important long-range effects for those involved.

1) It has led to the formation of a permanent anti-racist campaign and organization at SICC, focussing at the moment on the firing of an Arab gym teacher (one of only three in the city with a Ph.D. in Phys. Ed.), and efforts to ban the text *Psychology and Life* from use at SICC, a "scientific" work that advocates sterilization and miscegenation laws, based on the Nazi notion that blacks are genetically inferior to whites. A chapter of the **Committee Against Racism (CAR)** is likewise being formed at Richmond, to get the anti-racist movement under way here in a more effective way.

2) It showed a great many students, and some faculty, that no matter how much the bosses throw at us—from liberal arguments to divide-and-conquer tactics to direct use of the police and the FBI—in the short and long run we can win, from stopping Shockley and Birenbaum this once to destroying racism totally in the US.

3) Lastly, the role played by the Progressive Labor Party in the campaign—from initiating it in the first place after several years of making racism our number one target, to giving effective leadership when push came to shove—combined with attacks on the PLP from every racist in sight, in and out of SICC, and a general red-baiting attack on all those fighting

Continued on Page 11

## LETTERS

Continued from Page 7

and military leadership of the Soviet Union, had invaded Czechoslovakia. The act of Jan Palach was an intensely personal manifestation of the feelings of the entire people of Czechoslovakia. He became a national hero, on a par with the greatest son of his nation, Jan Hus: the intellectual who, half a millenium earlier, refused to abandon his convictions and to violate his conscience and was put to death at the stake. The memory of Jan Palach became one of the most cherished ones in the nation. Even when later all other overt mass resistance against the foreign invaders and the foreign-imposed rule was ruthlessly subdued, his grave in a Prague cemetery remained a shrine, a place of pilgrimage.

Five years later, the dignity of the nation which Jan Palach had died for has still not been recovered. Fierce repression meets those who struggle for it. Students have been in the forefront of this struggle. The Czech national Student Union (the SVS), of which Jan Palach had been a member, was one of the most outspoken and non-compromising organizations in Czechoslovakia; it was consequently banned, a few months after Palach's death.

Students continued to struggle as individuals, in ways that they saw best fit. The scope of the opposition to the foreign-inspired rule of Czechoslovakia has been demonstrated in several major political trials over the last years. In 1972, one of the best people the Czechoslovak student movement has ever had, Jiri Muller, was tried in Prague and sentenced to 5 1/2 years in prison. Muller is one of the purest people I have ever known. A man of unimpeachable integrity, of absolute honesty, of unsurpassed dedication to his country, he is also a man of extraordinary talents and scintillating ideas; ever since 1964 he has been perhaps the most inspired leader of Czechoslovak students. Having been found guilty of loving his country, he is now languishing in a prison regime in which even a hunger strike is qualified as a crime: as "obstruction of official activity," punishable with up to one (additional) year in prison.

I am writing to you as one who, in 1969, was the last President of the SVS. Today I am but a private person, pursuing my PhD studies, away from my country and friends. The memory of Jan Palach is not being forgotten in Czechoslovakia. It is not being forgotten despite the present regime's doing its best to achieve that end: a recent report in the *New York Times* informs us that the Government has debased itself even further, and in an act of

## Random Reflections

On a recent Wednesday evening the Gay Men's Collective sponsored a Gay Social Hour at the Teahouse. Richmondites at the Social were outnumbered by the students from the Gay Liberation Club at S.I.C.C. There was something very touching about these young men and women from the Community College. They arrived in mixed groups, talked and laughed together, and were not hesitant in expressing affection for each other.

At this point in their lives they are clinging to one another in a bond made stronger by the oppression they undergo daily, oppression not only by society at large but by their own families. Facing such rejection by their parents and siblings at home, they reach out to each other for the love and understanding that we all need to survive in this hostile world.

But as I watched them together, I began to feel sad. For how much longer, I wondered, will they feel comfortable in this innocent state of loving one another—the women allowing the men to touch them and even returning such tendernesses? Will those women in the group accept the idea that the gay men who now relate to them like brothers are really their enemy? For they will be exposed to this philosophy. They will hear that all men oppress all women. They may even be told that gay men are doubly guilty because of their hypocrisy in considering themselves innocent of any such oppression. And for this reason, they will be told, they should avoid contact with men whenever possible.

I would hope these young people will reject such theories and continue to struggle side by side to throw off society's formidable yoke that daily diminishes their lives. But I'm a pessimist. Some of them will probably heed the siren call luring them from their gay brothers, and the love they now feel will be replaced by distrust, if not hatred.

Perhaps I'm wrong. Perhaps times are changing. Perhaps this new generation of young gay people will continue to struggle together against their real enemies rather than allow themselves to be separated by the rhetoric of radical sexual politics. Oh, how I long for this! But, as I say, I'm a pessimist, and there seems to be scant evidence to warrant even a cautious optimism. ray hulseay.

supreme repugnance has willfully transferred Palach's remains elsewhere, to prevent people from paying homage to his grave.

As the Czechoslovak people have not forgotten, let us not have the world forget either. More: let the present authorities in Czechoslovakia realize that the world has not forgotten. I appeal to you to commemorate in a fashion you find suitable the forthcoming fifth anniversary of the self-immolation of Jan Palach. You may wish to do so by holding meetings, demonstrations, memorial services, or perhaps by writing a letter to Jan's mother (c-o my address). I also appeal to you to use this occasion to demand the release of Jiri Muller from prison, and the release of all other political prisoners in Czechoslovakia. You might do so in a letter to the Czechoslovak Embassy in your country, for example. The presently existing organization for students in Czechoslovakia, the Socialist Youth Union (SSM), does not, in accordance with official policy, recognize the memory of Jan Palach as one worthy of attention; nevertheless, it might be appropriate to inform them (the address is Jindriska ul., Prague 2, Czechoslovakia) of any activities you shall have engaged in - and provide them with a cause for reflection.

I am sorry my limited personal means do not permit me to write you a personal letter instead of a circular one. During my tenure as President of the SVS, as well as on other occasions, I had many opportunities to meet officers of student unions from around

the world. All these were fruitful encounters during which I learned a lot, and I would be happy to establish such contacts anew.

I would also have liked to provide you with more information - but a letter will carry only so much. Nevertheless, you might wish to contact the Committee for the Defence of Czechoslovak Socialists, 32 Belitha Villas, London N.1, England, which, among other things, has recently issued a pamphlet about Jiri Muller, or the Comite du 5 Janvier, 7 Rue Victor Hugo, 92700 Colombes, C.C.P. 1178-22, Paris, France. Also, I would appreciate very much if you would acknowledge this letter and inform me about any activity you might be planning to undertake.

The movement of students for justice and dignity is a world-wide one. In the last few months only, we have had students facing the firing squad in Chile, students embattled in South Korea, students victorious in Thailand. Maintaining solidarity across national lines is a source of continuous inspiration and strength to all of us.

With fraternal greetings  
Karel Kovanda  
Formerly, President of the SVS  
(Union of University Students  
of Bohemia and Moravia)



# ROCK SEXISM

OR HOW TO BE A GROOVY CHICK AT 14

by Lawrence Isler

Upon investigating sexism in today's rock music lyrics, I discovered that my knowledge of the concepts involved were deficient. After wading through several women's periodicals, I acquired a broader use of sexism. Sexism consists of fixed beliefs about the nature of women, the roles they should play, and their actions evolving from these beliefs. They function to keep the masculine principle of authoritarianism intact. (according to Marion Meade in Volume 11 of *Women: A Journal of Liberation*.) With some general background behind me, I proceeded to search further into other literary works for more on this subject of sexism in the media. None can elaborate better on this subject than Tripporrah Pasedane. None of the popular arts presents a more consistently degrading image of woman than the lyrics of rock music.

Selecting certain popular rock group lyrics and formulating a questionnaire based on these lyrics, a random sample was taken. It was designed for junior-high and high school students. This age group represents the largest audience of rock music. The groups selected were: Led

With Me" (on the Maggie May album) "I know your name is Rita—but your perfume's smelling sweeter—than last night when you were down on the floor.—So let's go upstairs—where we might have some fun—what's your name again—stay with me, stay with me;—but tonight you're gonna stay with me.—I even pay your cabfare home—you can even use my best cologne—but just don't be here in the morning when I wake up."

Led Zeppelin 11 contains the hit "Black Dog": "...Ah, ah child, the way you shake that thing—gonna make you burn, gonna make you sting.—Hey babe, the way you walk that way—watch the honey drip, can't keep away."

On their second album is found the "Lemon Song": "...I'll keep you satisfied—hold my lemons as hard as you can—I can feel the juice running down my leg."

An example from the album *December's Children* by The Rolling Stones called "Parachute Woman" says: "...Parachute Woman won't you blow me out—won't you land on me tonight—my heavy throbbler's itchin' to lay a solo rhythm down on YOU."

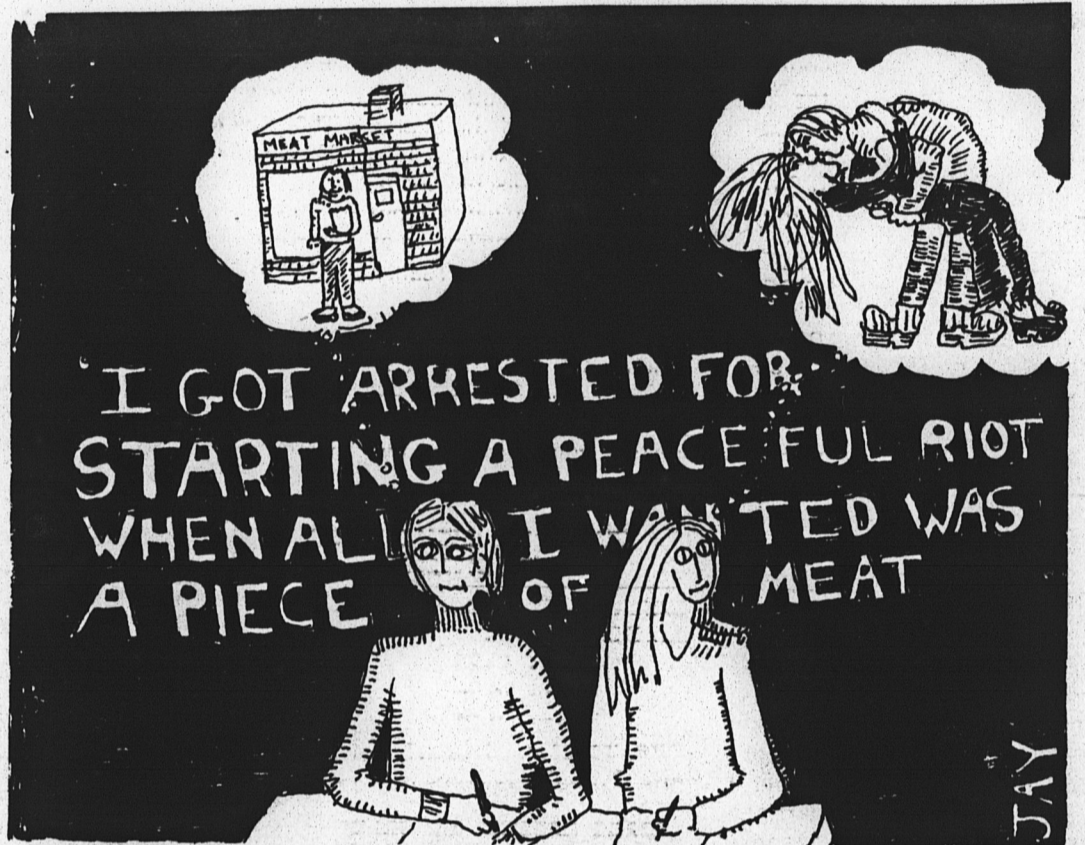
And in "Live With Me" from their *Greatest Hits* Album we hear: "...I got nasty habits—

Bleed Album tells us that "...We all need someone we can lean on—and if you want it baby, well you can lean on me.—She said 'my breasts, they'll always be open,—you can rest your weary head right on me.—And there will always be a space in my parking lot —when you need a little coke and sympathy".

ceived by the 13 to 16-year olds. The size of the sample was 150 junior-high and high school students from both the public and private schools. The female and male proportions were near equilibrium, 53 females and 56 males, also by age group. (Forty-four were excluded for reasons of not listing age or sex, or for not listening to two or more of the selected groups.) The criteria used for exceptional response were twelve questions responded to sexually. The results are as follows: Female, by age: 13 years—45 percent; 14—80 percent; 15—80 percent; 16—93.6 percent. Male results, by age: 13 years—22.2 percent; 14—36.3 percent; 15—92.9 percent; 16—73 percent. (Female Mean was 80.3 percent; Male Mean—51.8 percent.)

lyrics suggest a contemporary or normalized prospectus of the modern day sex roles for the male and female. The significantly higher response by the females leads one to believe that an eroding factor is at work to undermine feminine destiny to attain their true place in this society: "Women have a place in this society—in between the sheets." (A *Chicago Tribune* quote of Abbie Hoffman, a la Mick Jagger— 30 Sept. 1969).

The adolescent years of the female, as well as the male, are the most impressionable ones, and our sex roles are most



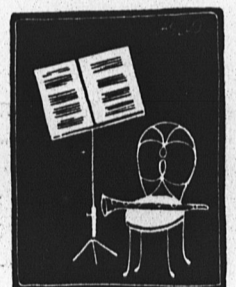
These lines are typical of the sexism presented by these groups in their lyrics. Their sexism is appallingly outspoken. The questionnaire used was based on these and other similar lyrics often less outspoken. An example of the questions that were used is as follows: In the quoted verse from "Parachute Woman" (see Stones' quote above), is the singer talking about: a) parachuting; b) sex; c) playing his guitar.

The results of the questionnaire are highly significant of the nature of what message is being per-

percent; 15—80 percent; 16—93.6 percent. Male results, by age: 13 years—22.2 percent; 14—36.3 percent; 15—92.9 percent; 16—73 percent. (Female Mean was 80.3 percent; Male Mean—51.8 percent.)

The results show that the female responded in higher degrees by age, as well as a group, to the questionnaire. Total response by the female was over 28 percent higher. The higher percentage recorded would indicate a greater probability that the sex roles portrayed might also be adopted at the same time. The sexism portrayed in these

sought after at this time. It should not be surprising to anyone to find that more than just music is sold in between the covers of these albums, but also the vulgar sexist attitudes and sex roles entrenched within the lyrics.



Zeppelin, The Rolling Stones, and Rod Stewart. They were selected for their appearances in: the November 1972 issue of *Rolling Stone* Magazine, which conducted a "top-ten" rock music popularity poll (based on record sales and concert attendance), and the March 1973 pop-music poll outcome of *Playboy* Magazine (based on record sales only.) These polls were selected on the basis of availability and accuracy of the data. Those not familiar with the term "porno-rock" (known by other names), will find this label appropriate for the groups selected. The Stones are considered by many feminists as the Kings of Porno-rock. Zeppelin is second only to the Stones in the hierarchical structure of rock sexism. Rod Stewart was selected as a male solo artist of enormous popularity among teenagers.

I shall briefly list some of the examples of their sexist lyrics. In Rod Stewart's song, "Every Picture Tells a Story" (on the album of the same name), we hear: "The French Police wouldn't give me peace—their women said I was a nasty person;—Got arrested for starting a peaceful riot—when all I wanted was a piece of meat." And Stewart in "Stay

I take tea at three—don't you think there's a place for you—in between the sheets.—Come on now honey, don't you wanna live with me... And finally, the title song on The Stones' *Let It*

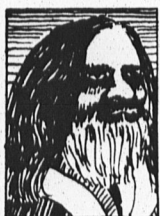
## Famous Preacher's School

"We're looking for people who like to preach."

A Brown Bros. Comix Advertisement by Elliott Negin



What do these well-known contemporary religious leaders have in common?



Maharishi



Billy Graham



Maharaj Ji

- a) They are loved and respected by hundreds!
- b) They are followed by thousands!
- c) They are worth millions!

Yes, all of the above answers are true. You too can make friends and influence the masses no matter how old you are (Maharaj Ji came to us a mere lad of ten—and look where he is today—a Perfect Master!). Just send for our free Preaching Aptitude Test and we can prescribe a tailor-made course for you.

From our course you will learn:

- 1) How to gain confidence!
- 2) How to say what means absolutely nothing and be worshipped for it!

Fred Murtz, a former Fuller Brush salesman now with a small congregation in Cranston, Rhode Island [of which "Atomic Walt" is a member], has this to say about our famous course: "Yup, the Famous Preachers' School has made me what I am today. It sure is better money preaching than selling brushes—less work too!"

- 3) How to preach non-materialism convincingly, and then drive away in your very own Rolls Royce!
- 4) How to proselytize objectively!
- 5) How to heal! (Later on in the course—how to sit, beg, and roll over!)
- 6) How to master the finer points of Transcendental Medication!

And that's not all! If you act within ten days we will send to you, absolutely free, a 45 rpm record featuring Pat Boone's rendition of that classic favorite "Bringing in the Sheaves" on one side, and "My Sweet Lord" as sung by Harry Kirschner and the Krishna Krooners, on the flip side. So don't delay—send today! Just indicate what religion you are interested in preaching, and in less than two weeks our heavenly messengers will be winging your test to your door.

Religions:

- |               |           |           |               |
|---------------|-----------|-----------|---------------|
| Calvinism     | Cretinism | Jingoism  | Commercialism |
| Protestantism | Hinduism  | Judaism   | Baptism       |
| Catholicism   | Buddhism  | Shintoism | Otherism      |

# PABLO'S INFERNO

by Pablo Suarez

Within the hallways of time and space one can hear the endless, exotic voices of the all-knowing ones. They speak of various harmonious, mystical subjects that come together to form the very core of our existence with the esoteric universe. Such knowledge that flows from their voiceless lips reaches us not through our ears but, through our inner-most self; our latent psychic self. One of these topics that reaches us to guide us as well as destroy us are the science and art of Witchcraft.

Witchcraft or ("craft of the wise,") Wicca has its roots far greater into the past than most people realize. It wasn't a creation of people fed up with the Christian religion but rather it can be traced back to the caveman. It originated when man saw many of nature's feats and want to control them. Man saw that by inventing and doing complicated gestures that he could control nature but had to also win favor in the eyes of some life forces called gods. As the years went on those who practice this religion (for that is what it is) found that by staying close to nature that they could continue to practice it.

The conflict came (as the rise of Christianity came into being) when the church saw this religion as a threat against the people following Witchcraft instead of their religion. The church also confused Witchcraft with Satanism (which I will discuss in the next issue) when in reality they aren't. The confusion came about because one of the gods of Witchcraft is a horned being known as the "horned one". They thought it was Satan, when in reality, witches don't even believe in the devil.

Witches believe in two basic beings, the "horned one," and "the great mother." The "horned one," as I mentioned before is a goat-like god who represents the male energetic personality. The "great mother," on the other hand, represents the female principle and is pictured as a moon goddess. Although they believe in these two

beings they also believe in an omnipresent God; the two gods are more like forces that exist on Earth.

There are two types of witches: one is a generic witch while the other is a neophite. The generic one is a witch whose family tree shows nothing but witches in the family. The neophite on the other hand is someone who is interested in becoming a witch. Both regardless of who's which has to go to a three step process. The first step is a cleansing period in which one learns the purpose of life that witches have to follow, learning meditation, concentration and how to increase on's imaginative powers. They learn that their primary purpose in life is to tap those free-flowing energies and use them not only to help themselves but to also help each other.

The second step is learning the mystic arts in their history. They learn in this step what it is to be a witch and the good as well as bad points of being one.

Lastly, One is initiated into the coven and actual practice. In this initiation one is proclaimed a witch; even males are coined this title. "Warlock," is the name given by people who don't know about witchcraft.

Although witches in general used their powers for good intentions, sometimes it can be misused for something as trivial as bad luck to an agonizing death. There is always a price to pay when a witch uses his powers for unjust purposes...these forces can counter-attack you at twice the initial impact.

At the present time there is an increasing interest in witchcraft. There are quite a number of organizations claiming to be the only coven that worship Witchcraft...no way! In order to find a coven that is for real one would have to be worthy. Some of these are but an extension of Satanism while others are just people who get together to worship their own made up Witchcraft.

How and why witchcraft works is still another thing which I'll discuss after I explain what Satanism is next issue. So without further ado, I bid you farewell.

## NEW YORK URBAN FELLOWSHIPS

Through the New York Urban Fellowships, qualified students are given assignments working in high-level municipal jobs. New York Urban Fellowships work for one year in positions with the Mayor's Office, the Bureau of the Budget, the City Council, the Department Social Services, and the Office of Neighborhood Government, earning \$4500 for the year. Besides the experience in urban government, Fellows receive graduate credit. The New York City Urban Fellowship is open to undergraduates who have completed their junior year of college by September 1974, and to graduate students. All students are encouraged to apply, regardless of their previous field of study. Information and application forms are available in Room 914 in the office of the Dean of Faculties. The deadline for the submission of applications and supporting documents is January 31, 1974.

### COLLEGE TEACHING FELLOWSHIPS

If your future includes plans for teaching in college and for beginning graduate school in September, you are eligible for the Richard Weaver Fellowship Awards Program. Not restricted to any field of study, this Fellowship awards students \$2000 and payment of tuition at the school of your choice. The deadline for applications is January 15, 1974. See Ilene Singh in Room 914 in the office of Dean of Faculties for details.

### SKI ITALY & SWITZERLAND WITH ALITALIA

Reg. Sched. 747. 10 Day Intersession Tours, 3 Departures:

Jan. 11-21

Jan. 16-26

Jan. 21-31

Air fare, transfers, deluxe 5 star accommodations, 3 meals/day plus more for \$349

### TRANS OCEANIC SKI TOURS

82-16 13th Avenue.

Brooklyn, N.Y. 11228

Phone: (212) 833-4621

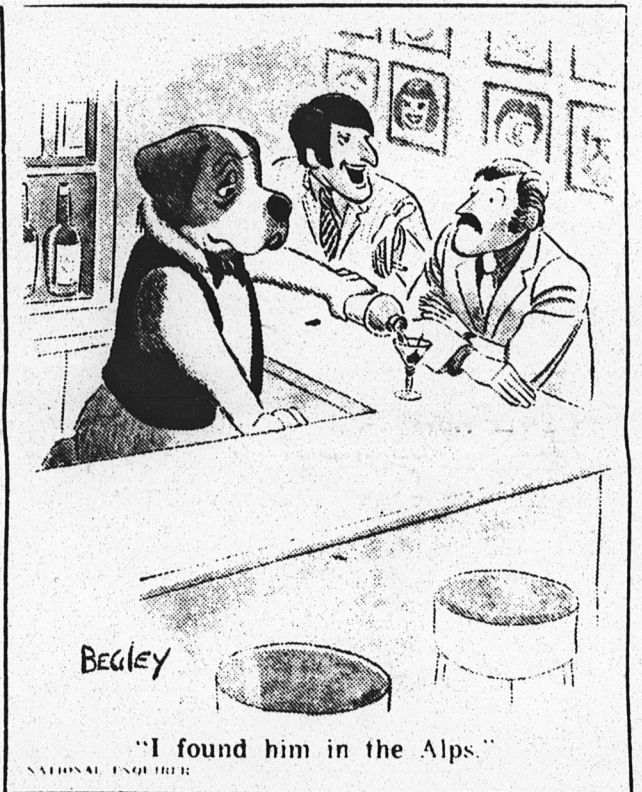
(212) 981-0484

### LOST

One toy poodle, brown. Answers to name of Cocoa. Belongs to a heartbroken little girl named Lucy. If found, please return Cocoa to 42 Willis Avenue, or call Merrie at 273-6625.



chicken people  
a.324



### Road to Revolt

Continued from Page 9

racism, has opened many people to the idea that only a workers' revolution will change this country around, from wiping out racism to lowering the price of eggs. Many people have come to see, more than ever before, that racism is a life-and-death fight for all of us, that we can only win with an all-out fight, and to win we need the kind of outlook and ideas that communists provide.

This New Year, more people than ever are putting up a resolution to put the bosses of this world on permanent vacation, and the workers of the world in the driver's seat—with plenty of gas in the engine, and no recall for defects. Join us.

—Paul Nelson, Progressive Labor Party, 273-3510.



Let me show you

HOW TO SPEAK AND WRITE LIKE A COLLEGE GRADUATE

I have helped thousands of men and women who have not had college training in English to become effective speakers, writers, and conversationalists. With my new C.I. METHOD, you can stop making mistakes, build up your vocabulary, speed up your reading, develop writing skill, learn the "secrets" of conversation. You don't have to go back to school. Takes only 15 minutes a day at home. Cost: little. 32-page booklet mailed FREE upon request. Send me a card or letter TODAY!  
Don Bolander, Career Institute  
Dept. 10810 25 East Jackson Chicago 4, Illinois  
Please mail me your FREE 32-page booklet on English.

## HERE ARE THE RESULTS OF THE SEVENTH ANNUAL RICHMOND TIMES PHOTO CONTEST

As you probably don't know, this contest is unusual in that the winners actually pay the RICHMOND TIMES. First prize winner pays \$3.68 and the second prize winner pays \$5.89.

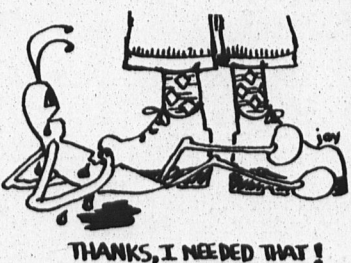
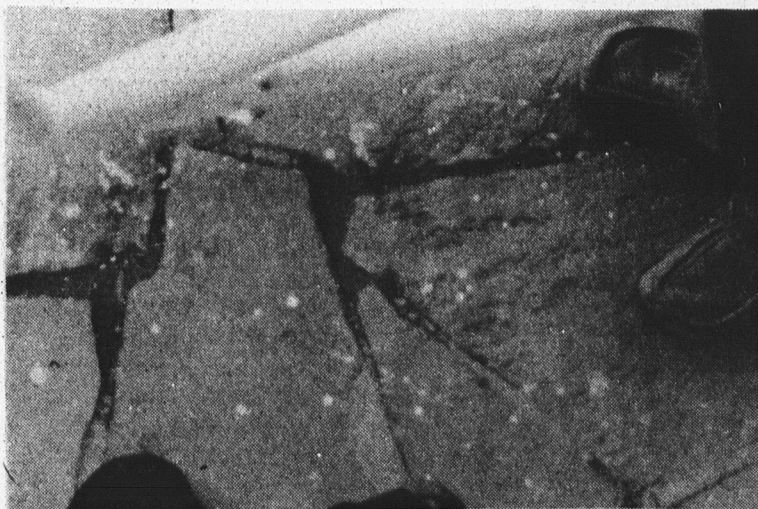
These selections were judged by a Mr. John Doe of the Staten Island Home for the Visually Insane.

1<sup>st</sup> Prize

"The Russian Revolution as Experienced By The Opressed Masses" — Marvin A. Chevenyecki

2<sup>nd</sup> Prize

"Sunset at Twilight" — Carvel Smith



In Color On Sundays

# PEE NOTS



In Color On Sundays

# DENNIS THE MIDGET



In Color On Sundays

# MANCY



In Color On Sundays

# MISS PEAGE

