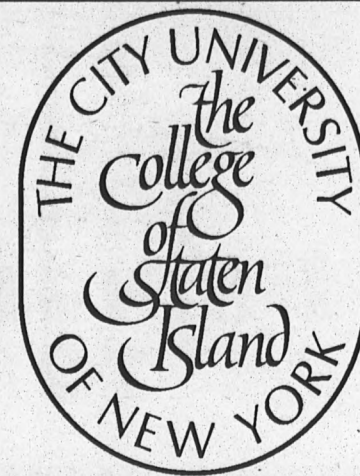


THE

BANNER

CSI'S OFFICIAL STUDENT NEWSPAPER



VOLUME III, ISSUE I

AUGUST 31, 1995

**The College of Staten Island
Campus Security and Public Safety Dept.
CSI Auxiliary Services Corporation, Inc.
Department of Parking Services**

**TRAFFIC AND PARKING
SUMMONS
NO. A 123456789**

DATE ____/____/____ TIME ____:____ AM/PM

License Plate Number: _____ NY State NJ

Type of Plate: Passenger Motorcycle
 Commercial Other _____

Make of Model: Ford Olds Merc Volksw
 Chev Buick Nissan Volvo
 Pont Plym Honda Other
 Dodge Chry Toyota

Body Type: 2-Dr Sedan Wagon/Van SUV
 4-Dr Sedan Pick-up

RETURN DATE ____/____/____

OWNER/OPERATOR... You are charged with the following violation:

- Exceeding posted speed limit Driving in an unsafe manner
- No decal or permit displayed No parking zone
- Decal affixed improperly Fire zone
- Parked in unauthorized zone Handicapped space
- Not between lines Parked on lawn
- Obstructing campus operations Parked on sidewalk
- Other _____

Boot _____ Fine _____ Total Amount Due _____

Location _____

Signature _____ SEC DPS Shield Number _____

The fine for the violation indicated above may be paid in person at the Department of Parking Services 1A-102, or may be mailed by enclosing this form and the correct payment in the attached self-addressed envelope. **DO NOT MAIL CASH**

Failure to pay or appeal this citation by the above return date will result in an additional fine.

SEE REVERSE SIDE FOR ADDITIONAL INFORMATION

**TRAFFIC
&
PARKING
TICKET
PLAN
IMPLEMENTED**

\$40
\$20
\$15
\$15
\$20
\$15
\$20
\$20
\$40
\$20
\$20
\$20
\$15
\$20
\$20

**TEMES LASHES OUT
AT SPRINGER...page 4&5**

**SUMMER REVIEW
...page 3**

**G-SPOT Revealed
...page 7**

AUTOMOTIVE REGULATIONS BRINGS TICKETING TO CAMPUS

By Michael Garofalo

New parking and traffic regulations are in effect for this fall. Summons will be issued to violators for the first time at CSI.

Tickets will range from \$15 to \$40. A \$5 late charge is added for payments not made within 14 days.

Classifications of Violation breakdown in to three classifications.

Grade I fines are \$40. Exceeding the campus speed limit of 25 MPH and parking in handicapped spaces qualify for violation of grade I. Parking in a handicapped space can also lead to the towing of your car.

Grade II fines are \$20. Driving in an unsafe manner, parking in a no parking zone, fire zone or sidewalk, and obstructing campus operations are violations of grade II.

Grade III fines are \$15. Unauthorized parking and not displaying a permit violate grade III. You can also be fined \$15 if your decal is not

permanently affixed to your car.

The CSI Auxiliary Services Department of Parking Services is working with security for implementing the new enforcement policy.

Director of Parking Services Barry Sommers commented, "The enforcement policy is intended to promote compliance and to provide a disincentive to violate the rules."

The revenue generated by the summons will cover the cost of staffing of the Parking Services. This would include hired students who will be enforcing the new procedures. It will also be used to maintain the parking grounds.

To ensure payment of the summons, stiff penalties hit violators who fail to pay fines. Students who fail to pay fines are subject to the revocation of parking privileges, and a stop may be put on their records.

College staff must also pay these fines. Staff who fail to pay fines are subject to collection proceedings and other college sanctions. Mr. Sommers replied, "It has to be even handed otherwise the whole thing breaks down."

The enforcement policy is intended to promote compliance and to provide a disincentive to violate the rules

Tickets will range from \$15 to \$40

The text on the back of the ticket. →

ADDITIONAL INFORMATION

Parking on campus is a privilege reserved for those who agree to observe the regulations of the College. The purchase of a decal does not carry with it any special rights or privileges.

In accordance with the enforcement policy promulgated by the Committee on Campus Parking, you are hereby notified.

To pay this ticket, you may either:

1. Bring this ticket and payment to the Department of Parking Services, 1A-102, during business hours. The Office is open Monday to Friday, including certain week nights, when the College is in session. Telephone 982-2294.

OR

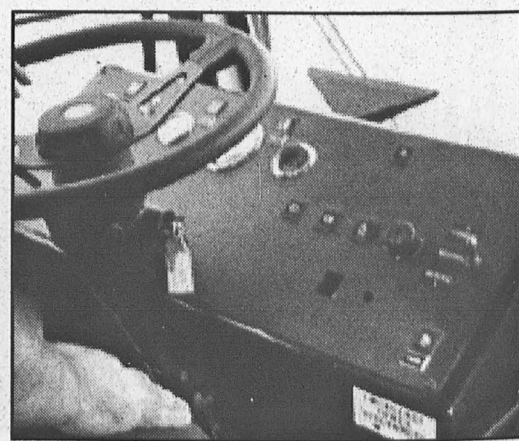
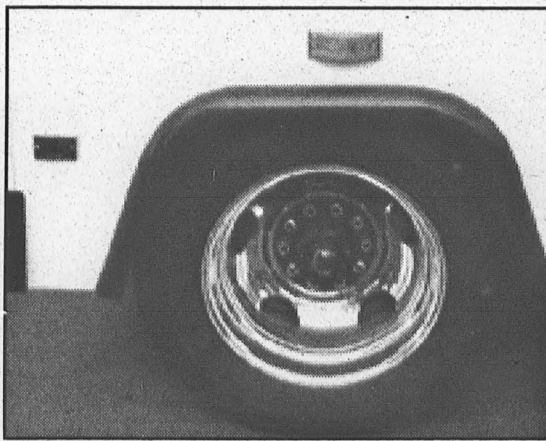
2. Mail this form and the correct payment using the attached envelope (Department of Parking Services, College of Staten Island, 2800 Victory Blvd, 1A-102 Staten Island NY 10314). Make your check or money order payable to: "CSI-ASC" and write the ticket number on the check or money order. Your check or money order will be your receipt. DO NOT SEND CASH.

To appeal this ticket:

A plea of not guilty to this summons or a claim of extenuating circumstances may be made to a campus hearing officer. Appeals must be submitted in writing within ten calendar days following the date of issuance of a summons. Appeal forms are available from the Department of Parking Services.

Failure of a student to pay a fine for a sustained complaint may result in revocation of parking privileges and other College sanctions such as, holds placed on registration, transcripts and graduation, until the fine is paid. Failure of a college employee to pay a fine for a sustained complaint may result in revocation of parking privileges, collection proceedings, and other actions as permitted by the College. Failure of a visitor to pay a fine for a sustain complaint will result in proceeding as permitted by law.

Banner Test-Rides New Electric Loop Bus



While the new bus has very good pick-up, it doesn't have much room. Only 22 passengers can ride; 16 sitting, 6 standing. It has a top speed of 45MPH, although you won't see it do that with the speed limit being 25MPH. The bus never leaves campus. It arrived on a flat bed just last Monday. The interior resembles a limousine, but be prepared for a bumpy ride.

-Ed

While you were vacationing...

By Jennifer Valle

WSIA BURN OUT

WSIA, the college radio station, suffered major blows to its equipment during the summer which left it off the air for nearly two months. Early in July, due to a Con Edison accident, the equipment was toasted.

Production Director Charles Scheffold commented, "We had a problem with Con Edison. They had an electrical problem and they fried our equipment." He continued, "After Con Ed, we put up our back-up equipment but it failed. After a while of being off the air, our new equipment came back repaired and on the same day we installed it, lightning struck it." Faculty Advisor Greg Adamo explained, "Our engineer John Ladley has been working on this for the past three weeks. We spent almost \$1,000 on the antenna and \$800 to fix the transmitter which was hit by the lightning."

Mr. Ladley has been putting up grounding in order to protect from further lightning, burnout although Mr. Adamo warns, "The grounding will help stop this problem but there's no guarantee... being on the tallest point of the island has the advantage that we can be heard all over Manhattan, Brooklyn, Jersey City, but it also has a curse, it attracts lightning."

WSIA hopes to be back on the air by the first day of school. Scheffold scoffed, "We hope to be on next week (first week of school) unless a frigg'in hurricane hits us and our antenna falls down."

Kenny Rogers' Smokin' Deal Shot Down

Proprietors of Kenny Rogers Roasters Restaurants struck a deal with the CSI Barnes and Nobles Bookstore in which Kenny Rogers Roasters of Staten Island donated nearly 5,000 book covers to the College Bookstore. Because the book store is

run by Auxiliary Services (in charge of food services on campus), a conflict of interest forced the Book store to back down from the deal. These book covers would have hosted coupons for Kenny Rogers chicken redeemable with a college ID at their restaurants, but the bookstore did not accept. Students can rest assure that the coupons are still available... on the back of this issue of The Banner.

STUDENT SCHOLARSHIP AWARDS

Nearly 100 students gathered together to receive scholarships ranging in value from \$100 to full tuition for their scholastic excellence. Vice President Carol Jackson commended the students for their hard work and endurance and explained the process that each application underwent. Out of over 1,000 applications, only 100 students received the awards.

Nurit Bass, recipient of the Presidential scholarship, exclaimed, "I feel great and I owe it all to my husband, my friends and my professors that inspired me a lot." She continued, "I had sent the application in and didn't think about it, I just tried to do my best all through school. I never anticipated getting this award." Surprised to have received three scholarship awards, Michael Garofalo commented, "No, I'm not just a vagrant looking for food, I actually won something."

Students continued to celebrate as they congratulated each other on their achievements. Breathing a sigh of relief, scholarship awardee Irene Glover commented, "When they didn't contact me right away to let me know I got this award, I figured that I didn't get it. When I finally found out, I was very happy."

Here's a list of other events that happened while you were gone:

Tuition increased \$750 for students already registered, a lot more for students just coming in and even more for 'out of town' students.

The Loop bus has dropped from three buses to two buses. (Fran, we will miss you).

The price of soda at vending machines rose by five cents. Prices on selected candy items also rose.

TDX ripped apart the roads in the front of the school as well as the 'Great Walk' between the Library and Campus Center. Tar was laid down and the bricks were replaced in order to stop them from sinking.

Club funding was reduced from \$1,000 to \$500 for the year.

Auxiliary Services has hired students to be Traffic Enforcement Officers in the hopes of reducing traffic violations on campus.

Security Officer MURDERED

Ongoing investigation continues

By Jennifer Valle

Watchdog Security Officer Syed Iftikhar Hussain Shah was found stabbed to death in his rooming apartment at #3

Slosson Terrace on Monday, June 19th. Forensics determined the time of death to be at approximately 5p.m.

on Saturday, June 17th, although the body was not discovered until Monday when an unidentified neighbor noticed a foul odor coming from Mr. Shah's rooming apartment.

According to Detective Murray of the 122 precinct, because of Mr. Shah's quiet lifestyle, the police have little to go on. Saddened by the loss of a fellow officer, John Petrai of CSI security commented, "He was the nicest man I ever met in my entire life... he was very religious, always praying." Mr. Shah, a security officer who has been working in CSI for two years, lived in "bad conditions" as described by fellow workers and he had a family in Pakistan which he was financially supporting each week.

To date, no new evidence has been found although Detective Murray commented, "We are trying to track his movements on that day. He didn't have anyone who was really close to him and we really can't tell if anything in his apartment is missing because no one knew his living conditions... He was a quiet man who kept to himself."

Baffled by this murder, Mr. Petrai commented, "He lived in a bad neighborhood... crack heads probably killed him for his paycheck." Mr.

Shah, who was in his sixties, was described as "a man who couldn't hurt a fly," and known for his weekly trips to the cemetery where he would pray for the dead. Angered, Sergeant Jose

Colon exclaimed, "He lived by the old college (St. George) by Central Avenue... they got crack heads and everything down there.

We told him he should move but he always said, 'God is with me so nothing is going to happen to me'." Officer Colon continued, "He was an angel and he was always praying for people. If he stayed with ten dollars in his pocket for the week, that was too much, If I find out who killed him, he's dead meat! Why would anyone want to kill him?"

Director of Security Gene Martinez commented on the passive man, exclaiming, "He was

probably one of the gentlest and nicest men I've ever known. When I learned what had happened to him, I was amazed and shocked. He was a true victim... if people tried to mug him, he wouldn't have resisted..."

An ongoing investigation is still underway according to Detective Murray, who stated, "We are attempting to locate any witnesses or anyone that may have seen Mr. Shah on Saturday, June 17th."

Anyone who has any information on this mat-

ter should contact Detective Murray at 987-3100.

Assistant Director of Security John Flaherty commented, "He was without a doubt, the nicest person I've ever met, He will be missed."

He was the nicest man I ever met in my entire life



He was an angel and he was always praying for people

TABLE OF CONTENTS

News.....1- 5

Interactive Entertainment.....6

Book Review.....7

Parking Procedure....8

Pissed Off.....10

Commentary.....11-12

JOIN THE BANNER TODAY!

THE BANNER IS PUBLISHED BY THE STUDENTS OF THE COLLEGE OF STATEN ISLAND. ALL WORKS CONTAINED WITHIN THIS PUBLICATION ARE THE PROPERTY OF THEIR CREATORS, AND ARE PROTECTED BY COPYRIGHT LAW. OUR OFFICE IS LOCATED AT 2800 VICTORY BLVD, BUILDING 1-C, ROOM 228, STATEN ISLAND, NY, 10314. OUR NEWS BUREAU CAN BE REACHED AT (718) 982-3115 OR 3116, FOR ADVERTISING INFORMATION DIAL (718) 982-3117. FAX (718) 982-3140. OPINIONS EXPRESSED HEREIN ARE THOSE OF THE WRITERS, AND ARE NOT NECESSARILY SHARED BY ANYONE ELSE. NO MATERIALS WITHIN THIS PUBLICATION MAY BE REPRINTED IN WHOLE OR IN PART, IN ANY FORM, WITHOUT THE PERMISSION OF THE EDITORS.

TEMES ACCUSES SPRINGER

By Jennifer "Scoop" Valle

Chairman of the Engineering and Mechanical Department, Lloyd Temes, believes that President Springer chose certain members to be on the Ad/Hoc Committee in the attempt to pre-determine the outcome. He further claims that she is following an agenda to remove all 2 year programs in a grand conspiracy known as the "Goldstein Report." In an exclusive interview, Dr. Temes exposes his beliefs and explains the validity of his claims...

BANN- I understand the Technology Department did take serious cuts, however they were saved, and they're not going to be removed as the Physical Education Dept. What would you attribute that change to?

LT- The City University is set up in many ways as a democracy. There are certain things that require particular procedures... it's not the chairman according to the paperwork that sets up the University. It's not to the President or the Chancellor to do away with departments or programs unilaterally. There are procedures that go to the faculty councils, long length planning committees, things like this... however, there's a safety out in that when there is a financial exigency, the President and the Chancellor can unilaterally declare certain things as habit without going through the democratic procedures. A lot of things have been threatened

because we had the financial exigency. It was not necessary, in order to meet the problems that we have. I don't know if it was necessary because there were three plans as you recall, plan 1 plan 2 plan 3. But it wasn't until plan 3 that the elimination of the Mechanical Technology Program and the elimination of the Industrial Technology Program was considered.

BANN- Can you just clarify plan 1 and plan 2 for me?

LT- Plan 1 was a certain number of dollars going to be the shortfall for the college because of the budget of the city [and] of the state. Plan 2 was if there was more of a cut, more of a problem than plan 1. Plan 3 is the biggest cut. According to the President, she was going to go along with plan 2. Now I mentioned before that there was a certain amount of Democracy involved in the structure of the University. The committee to assist the President in making these financial exigency cuts was not an elected committee, it was not part of due process. It was a committee chosen by the President herself to support her and to research for her what to do. But there's another thing happening here too... I was asked by the Vice President in a closed meeting 'if my objection to the doing away with particular programs would mean that we would still be stuck with teaching Latin and Greek even though there's no demands for it but we have faculty for it' and I said, "No". If you can show me that there's no demand for

a program, I'll support you, but when you eliminate the faculty you have to follow the tenure and seniority regulations which are in state law. It's not in contract between the Professional Staff Congress in the union, it's not even in the contract between PAC.. It's in state law about how you have to handle tenured seniority for college faculty.' I want that followed but I also want a commitment to the two year programs. That did not start the financial exigency. This started with the arrival on campus of the president. . . President Springer.

BANN- How do you know that it is her goal to eliminate two year programs.

LT- Soon after her arrival, the *Advance* interviewed her and she said in an interview with the *Advance* 'I want a brighter student body' and 'I want to do away with the two year programs' the other question is 'Hey where are you going to get students?' (She said) "oh we can go to New Jersey" I spoke with the reporter from the *Advance* Don Gross and he said, "No, we quoted her right" cause she said, "No, I was misquoted." If she can make that kind of a recommendation, than she knows nothing of the political structure in this area. She is from out of town, and does not know what the needs are. N.J. has nothing to do with the funding of CUNY schools. We are a CUNY school, and if you don't pay the entrance fee,

you don't play the game. Not only that, we pay taxes, you meet me where my needs are. The two year programs do just that. We cop to where the students are and give them the math and the English and job skills. I resent that on my watch this one person who was here less than a year destroy what so many of us have worked so hard to develop.

BANN- I know that the budget has not yet been decided.

LT- I'm prepared to sit down and contribute what has to be con-

tributed from my department but I won't want to come to the table or I will come to the table screaming and hollering as I am now when the administration takes an attitude on 2 year programs on this campus. In addition. . .

BANN- You claimed she was following an agenda?

LT- Yes and it comes from that early interview where she says 'there's no room here for 2 year programs.'

BANN- Do you have a theory why she wants to eliminate 2 year programs?

LT- Intellectual snobbery. Even though a Bachelor's degree in Philosophy can't get you a job, there are people who to them, that's a lot more significant than a two year degree which can get you a job.

BANN- Goldstein Report? Can you elaborate on the Goldstein Report?

LT- Two years ago. . . one of the things that has been researched in the field is how do we cut the cost of university drastically. Dr. Goldstein, on of the presidents of one of the other colleges, wrote a paper for the chancellor in which he said, "One of the reasons for the expense is that we have too many majors duplicated elsewhere in the city university; for example, if you wanted to major in Italian, you could major here, go to Kingsborough, Brooklyn College, City College. Goldstein said, " No, we shouldn't be able to do that; we could do it more efficiently and

"I have so many years in, that my retirement paycheck would be higher than my teaching paycheck so that I can't be threatened."

economically if we had one university, one college in the university giving you the opportunity to major in Italian or Engineering.

BANN- So, there's a move to consolidation in the Goldstein report?

LT- That's right which that goes back three years. This was the basis for firing Dr. Volpe.

BANN- Since Reynolds was the one pushing towards consolidation, do you think Marlene Springer could have been brought from out of town, maybe under the direction of Reynolds.

LT- Sure. Chancellor Reynolds was the key person in the appointment of Marlene Springer. Even if she didn't hand pick her, Springer, very bright lady, I give her a full 10 points on being bright, but you don't have to be that bright to recognize what happened to Volpe. He was fired primarily because he was fighting the Goldstein move. In any event, I see the Engineering Technologies under attack. My concern is to protect my corner of the world.

BANN- What about other members of the Ad/Hoc committee such as Mirella Affron which was appointed by Marlene Springer as well as VP Carol Jackson appointed by President Springer as well. Do you think they are following along with the Goldstein Report along with Springer? Have you contacted them?

LT- You're talking to me now because basically I'm a free spirit. One of the reasons I'm able to be a free spirit is I'm the highest level of authority at the college not individually, but all of the other chairs as well that does not depend upon the President for. . . does

not serve or pleasure the President as do the Vice President and the Deans or what not. Your a Dean and I'm President. If I don't like what you do, you're not Dean anymore you fall back to being...

BANN- Janitor?

LT- Yeah, you know, whatever. As a chair, I have a freedom of **not** serving directly at the pleasure of the presi-

I intend to stay here with my department and outlive this carpet bagger from the south.

dent. Many people expected me to be appointed or asked to join the committee and I wasn't asked. I got a lot more things that I do with my time, I don't need that. But instead you get a spread. The lowest man on the totem pole, Dr. Rothkopf, the last person to be hired and also a person who is up for a promotion was asked to be on the committee... not a particularly strong person.

BANN- Such as yourself?

LT- Like with myself... I have so many years in, that my retirement paycheck would be higher than my teaching paycheck so that I can't be threatened and Dr. Rothkopf has a very large family... I **mean** a very large family and his pension is no where near where his needs are so, it's easier to twist his arm... my arm doesn't twist... not because I'm a hero because I have nothing to lose. I have nothing to be a hero about. I've

been in to see the Vice President a number of times, I've spoken, on occasion, to the President because the President has asked that we do not go directly to her, that her door is not always open. This is why she has a hierarchy, she wants people to go through the Deans, through the Vice Presidents, rather than to take up all her time, she speaks constantly with them...that's her style. I have no problem with that. I have also gone to

speak with the City Council in the Education subroot. Last week I went to speak with the Trustees of the City University. I'm out there doing the good fight the best I can, just like I said, I don't want this group, the Technologies, to lose on my launch whether it's the students, the faculty or what we can do for this city.

BANN- You were saying about the Ad/hoc committee, how they were unjustly chosen. Are you alleging that they are basically under the President's influence?

LT- Yes. I think that the President put it together in an attempt to pre-determine the outcome.

BANN- What is the current status of the Tech department?

LT- Remember when I said there were three phases? She chose a phase two

and one half were she did vanish two of my programs, however, we saved the faculty temporarily. Maybe they can teach elsewhere in the college. That satisfied the financial exigency. Once the financial exigency is satisfied, we fall back again upon the democratic operation of the University. In submitting the phase 2 & 1/2 to the Chancellor, the President submitted a preamble, not part of the document, but a preamble to the document in which she said she is now going to be negotiating with New York City Technical College in Brooklyn to try to get us off this campus (Tech dept.) and on to that. It is questionable whether the faculty will go with it. Now, if you're going to negotiate, what will happen is that the faculty will not go with it. The whole idea is to improve your budget picture and you can't do that by picking up faculty. I'm to start proceedings in our structure for the removal of the two year technical programs. Now, who asked her?! We asked her 'how are you going to cut the budget tomorrow morning.' What she has done is uncover us... put blazing lights on us and arrows saying 'Hey these are the guys, we'll cut them. Anytime there's a problem you come down, we know just where to cut.' The other colleges who **respected** their programs, are planning now. In this case, the President has deliberately shined a light on us in order to weaken us... and we have been here many more years than she has... and I'll give you a scoop, I intend to be here longer than she is also. I intend to stay here *with my department* and outlive this carpet bagger from the south.

BANN- Do you still plan to vote 'no confidence' in the president.

LT- If it comes to that... yes.

YEARBOOKS SAVED

By Jennifer Valle


After Student Government decided for students that they did not need a yearbook, your friends at *The BANNER* stepped in and salvaged what was left of '94, which is now available

at the Student Government office, and gave life to the '95 yearbook as well.

Our own Editor-in-Chief, Michael Garofalo, upon hearing that '94 was canceled, stepped in and was able to complete the book. Afterwards,

because no funding was set aside for Yearbook 1995, Mr. Garofalo created a plan (Project '95) which is enabling us to put together the yearbook at no cost to Student Government. It took Student Government and the Association three months to finally approve the idea. This was to insure that it would not cost them anything or cause any legal problems.

Garofalo and the rest of the Banner staff (yes, me too!) began to sell advertisements for the yearbook. We also struck a deal with chocolate distributors to raise funds for the yearbook (if you see a person selling chocolate at CSI, ask them if they are from *The BANNER* and buy a chocolate). Yearbook '95 is projected to be released mid to late Fall. For more info, contact the Banner at 982-3117 and ask for Yearbook Central. Yes, Mike paid me to write this.



Editor - In - Chief
Michael Garofalo

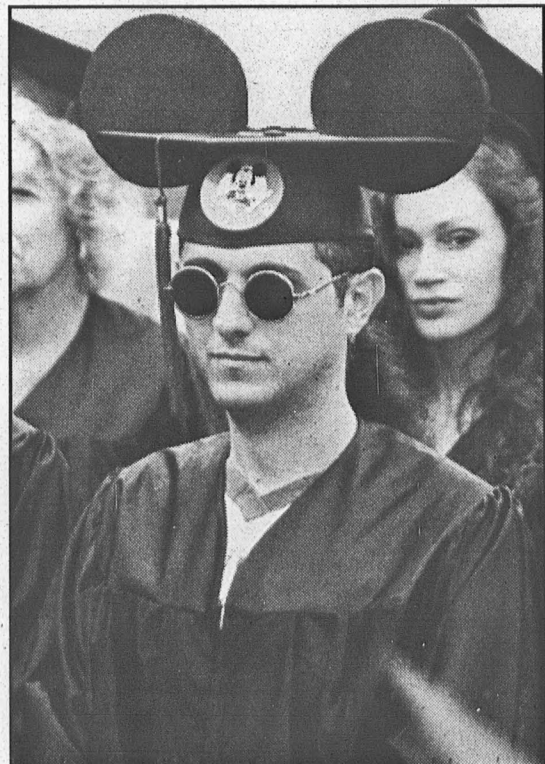
Associate Editor
Richard Arroyo™

Business Manager
Ralph Mastrangelo

News Editor.....	Jennifer Valle
News Secretary.....	Yvonne Villa
Sports Editor.....	Jason Castro
Commentary Editor.....	Christopher Zeyer
Arts Editors.....	James Scotto-Lavino
	James McNulty
Copy Editor.....	Eric Minton
Secretary.....	Robin Pudlin
Business Secretary.....	April Butensky

STAFF: ERIC CASTILLO, PETER MATLAK,
BILL SPURGE, AMY VENEZIANO

FACULTY ADVISOR: Professor Onwuchekwa Jemie



INTERACTIVE ENTERTAINMENT

MARATHON II Previewed at Macworld '95

By Michael Garofalo

Boston - At Macworld '95, Power Computing distributed "The Disk", a free CD containing a preview of Marathon II.

The sequel boasts new technological improvements in graphics and sound.

New Additions:

- Wider screen display
- Ambient sounds
- Underwater action
- New weapons
- New characters
- New lighting techniques
- "BOBs" fight

The preview is 19 megs in size, even though it only has three levels.

Bungie software, developers of the Mac hit Marathon, aligned with the Power Computing Corporation to produce "The Disk".

"The Disk" also contains an interactive commercial for Power Computing that runs for about twenty minutes.

Power Computing is the first company licensed to create computer clones using the Macintosh operating system.

For those of you who wish to obtain a copy of the Marathon II demo, check out the Bungie home page - [HTTP://www.bungie.com](http://www.bungie.com). Once this page is completed, the official demo will be posted there.

THE REVIEW:

While still in its construction stage, Marathon II shows a drastic improvement over the original.

The story stayed about the same and just as confusing. You're out to stop Durandal again. This time, however, you are on the offensive.

Now that the BOBs fight, it feels more like a military exercise. The BOBs provide cover fire for you. They also have some pretty cool one liners.

The background noises add a new depth to the game. If your computer has stereo sound, you're in for a treat. Hear the lava flow from three rooms away. Hear an alien grow louder as it stalks you.

New underwater battles actually make use of the oxygen bar that was used only once in the original. Accidentally fall into a pool of lava, and you're in for an interesting death scene.

Lighting effects can now create more impressive shadows. Lighting



can now come from a specific item, such as a control screen, that only lights the parts of the room that a "real" light would.

Your enemies really did not change much, but eliminating them with the new double barrel shotgun

does prove to be fun.

The only draw back is the textures look too much like DOOM. I miss the futuristic look. However, doesn't take away from the total carnage from this game.



Terminal Velocity - Shareware Version

3D Realms for the IBM

How does one improve on Doom? The answer is Terminal Velocity. It's a 3D game where you control a fighter along the surface of a planet or a starship. The plot of the game is really unimportant; all you really have to do is fly and shoot. There's a radar screen in the top left corner of the screen which tells you where to find your next target and shows the enemies around you.

You fly along taking out land and air targets. At times the destruction of an enemy will give you a "power-up" of sort. Power-ups can be either stronger weapons, afterburner power, or restored shields. At certain times you will have to fly into underground tunnels. The walls move and rotate in an effort to end your mission and enemy ships wait to fire on you and ruin your day.

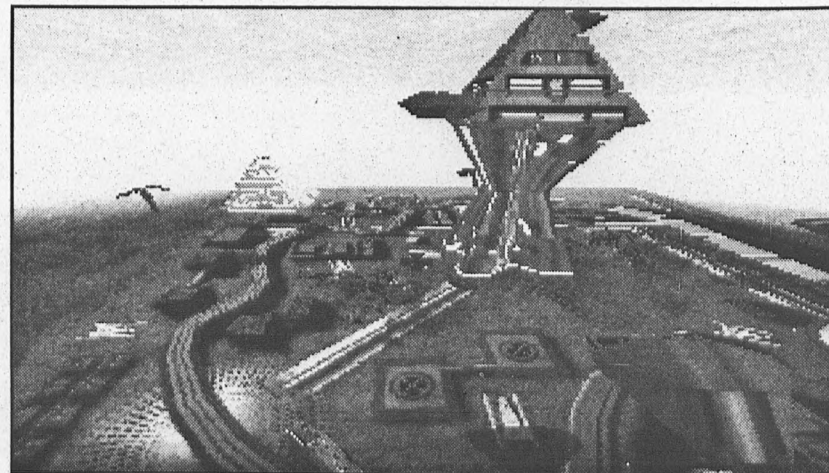
The games graphics are great and supposedly even better if you have a Pentium or 12 MB of

RAM. But on my 486 DX2 66mhz with 8 MB, the game runs smooth and fast. The shareware version gives you access to only one mission, but what a rush it is! This game is worthy of registration. Those interested in obtaining the shareware version can go to a computer store such as Electronic Boutique, or on the Internet on the Web at [HTTP://magnum.magnet.co.uk/~answer/terminal.html](http://magnum.magnet.co.uk/~answer/terminal.html) or from FTP at <ftp://ftp.uml.edu>. Whichever way that you obtain the game, it will be well worth the effort.

It's coming...

**THE BANNER
HOME PAGE**

STAY TUNED FOR DETAILS.



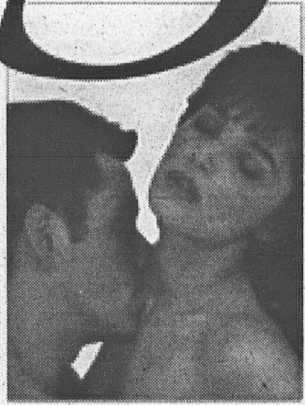
Book Review: Kama Sutra Made Easy



ANNE HOOPER'S

KAMA SUTRA

CLASSIC
LOVEMAKING
TECHNIQUES
REINTERPRETED
FOR TODAY'S
LOVERS



By Chris Zeyer

The Kama Sutra is an ancient text on the ways of love making. Throughout the centuries it has had mixed reviews. It has been considered to be a celebration of life, or to be perverse and disgusting. Author Anne Hooper has attempted to make this text more palatable to the modern audience.

Her version of the text is called, "Kama Sutra: Classic Lovemaking Techniques Reinterpreted For Today's Lovers." In this adaptation she tries to convey not only the techniques,

but also the philosophy behind the Kama Sutra. She states in the introduction, "I began to understand the sense of humor behind some of the more exotic poses and realized that many of the poses were not just about sex—they were also about the union of body and mind. Some of the sexual positions in the Kama Sutra are yoga positions, and the goal of yoga is to create mental and physical harmony." After reading the book, I tend to agree.

Many positions in the book are there to help you become more aware of your lover's body as well as your own. It shows you in graphic detail how to achieve fulfillment without one person getting more pleasure than the other. I did find that there was a focus on how a man can pleasure a woman than the other way

around. I can only assume that the author felt that a man will find pleasure no matter what, but a women needs more. This book is more than just love making.

Before Anne Hooper even gets into the actual positions (no pun intended), she has three chapters dedicated to foreplay and sensuality. She explains that the two people must be

in the right frame of mind and properly aroused in order for both to reach the peak of sexual satisfaction. This book is not for people that just want

Many of the poses were not just about sex—they were also about the union of body and mind.

to "get off", but rather for people who care about there significant other and want to ensure happiness. Of course, those who just want to get off could just get the book to look at the pictures.

Almost every page has expert photographs of two people modeling each position. From searching for the "Erogenous Zone" to "Fellatio" to making "Erotic Sculptures," each position is shown by actual people (not cartoons or illustrations). The original text had illustrations that probably contributed to it being considered dirty. The illustrations are just there to show how the body is to be positioned and show that certain ideas are possible. This book takes a realistic view of sex.

Alice Hooper realizes this is

the nineties and she tries to make her text more politically correct. All positions are just two people. The only things she brings into the bedroom are "massage oils and additives", which are only to be used during foreplay to help with arousal. For some, Ms. Hooper recommends a vibrator to help with duration. She even adds a chapter for the modern crowd that isn't in any of the previous Kama Sutra versions.

She dedicates the last chapter to safe sex. She explains that diseases have always been around, even when the original text was written. She explains how disease s are transmitted and promotes condoms with "spermicide containing nonoxynol-9". The book shows how to put on a condom and advises that if the man has a problem with it, the woman should put it on for him. This may help with arousal. Or for women just to get a female condom. She also says you must have complete trust with your partner, and that even if you trust you should still be tested. She even goes as far as discussing

"Non-Penetrative Sex".

She states, "As sensitive lovers know, penetration need not occur every time a couple has sex. Dry kissing, embracing, stroking, and massage all express closeness eloquently and with minimal risk of HIV infection. Mutual masturbation may be used in the same way, but to be extra safe the active partner should not allow any semen or vaginal fluid to come in contact with her or his fingers or hands in case there are any cuts, abrasions, or open sores on them."

This book is really a manual on how two people could satisfy one another on more than just the physical level. It shows a spirituality that I feel is missing in current times. Anne Hooper is trying to bring back the sensual touch instead of the current trend of wham bam. I recommend READING THIS BOOK (don't just look at the pictures) and don't feel embarrassed about buying it. Remember... it's not pornography, it's sensuality and caring.

THE G-SPOT



A super-sensitive area on the vagina's front wall, the G-spot is about a half to two-thirds of the way in. If pressed firmly (by the penis or a finger), it creates a powerfully erotic sensation. Research indicates that not all women possess a G-spot, but many of those who have one know that it can be capable of triggering orgasm.

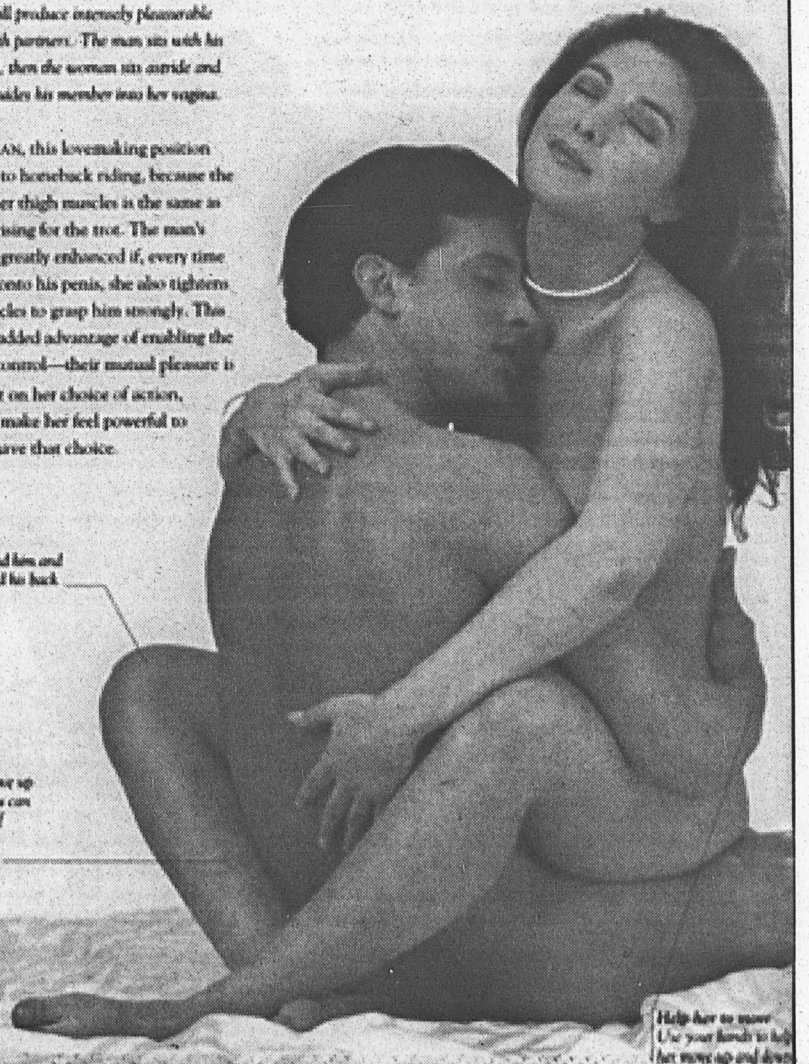
POUNGING ON THE SPOT

This position will produce intensely pleasurable sensations for both partners. The man sits with his legs outstretched, then the woman sits astride and facing him and guides his member into her vagina.

FOR THE WOMAN, this lovemaking position bears similarities to horseback riding, because the movement of her thigh muscles is the same as that used in rising for the trot. The man's pleasure can be greatly enhanced if, every time she slides down onto his penis, she also tightens her vaginal muscles to grasp him strongly. This position has the added advantage of enabling the woman to be in control—their mutual pleasure is dependent on her choice of action, and it can make her feel powerful to have that choice.

Arms and legs
Put your arms around him and cross your legs behind his back.

Rhythm control
Because you can move up and down freely, you can control the rhythm of penetrating and the depth of penetration.



Help her to move. Use your hands to help her move up and down.

PARKING: POLICIES PROCEDURES PENALTIES

I. INTRODUCTION

Parking on the campus of The College of Staten Island of City University of New York is a privilege reserved for those members of the College Community and their guests who agree to observe the regulations of the College. The College of Staten Island provides roads and parking lots to make college business easier to conduct. Methods of registering vehicles and regulations governing their use on campus are stated below. Parking vehicles on campus without campus parking permits, or without permission from the appropriate college office or in violation of regulations, is not allowed. Individuals other than students, faculty and staff who may require vehicles on campus in order to conduct business may obtain parking permits by contacting College Security Office in advance.

A. RESPONSIBILITY

The owner and/or operator of a private vehicle for use on campus is responsible for its operation and for any fines or charges incurred. By registering a vehicle for campus privileges, the registrant and/or owner agree to abide by all traffic and parking regulations. The assignee of a college owned vehicle is responsible for its operation and any fines incurred during the period of assignment.

B. TEMPORARY INSTRUCTION

Occasionally, special short term conditions arise that may require suspending a portion of these regulations, or may require additional, temporary regulations and/or instruction. The Director of Security is authorized to take such actions as circumstances require.

C. REGISTRATION

1. Students, faculty, staff and affiliated campus employees (i.e. CSI Association, Auxiliary Services etc.) may register a vehicle for campus use in accordance with the procedures outlined below, and upon payment of an appropriate registration fee.
2. An owner/operator may register no more than one vehicle for on-campus use.

II. ELIGIBILITY - An owner/operator with an unpaid fine will not be permitted to register a motor vehicle for on-campus parking until the indebtedness i.e. satisfied.

A. STUDENTS

All students are eligible to register their motor vehicles for access to non restricted general parking areas. Students are cautioned that registration does not guarantee a parking space. Parking lots are located throughout the campus. Free shuttle bus service i.e. provided from each of the parking lots on a scheduled basis.

B. FACULTY/STAFF

Faculty and staff are eligible to register their vehicles for access to faculty/staff parking areas. Faculty/Staff are cautioned that registration does not guarantee a parking space and they may have to on occasion park in general parking.

C. VISITORS

Visitors and all others associated with the college, may operate and park a properly college registered vehicle on campus subject to these regulations. Visitors are permitted to park in spots designated as visitor parking and in any lot not designated as faculty/staff.

D. DEFINITIONS

1. The term motor vehicle, as used in these regulations, refers to any motor-driven vehicle, such as an automobile, truck, motorcycle, motor-bike, mini-bike, motor scooter, or moped.
2. The term faculty/staff applies to:

- a. employees on payroll of the College of Staten Island.
- b. employees on CSI Foundation or Research Foundation payroll at the College of Staten Island.
- c. employees of CSI Association.
- d. employees of CSI Auxiliary Services Corporation.
- e. employees of appropriately affiliated organizations housed on campus.

3. Eligibility must be validated by exhibiting the appropriate identification card.

III. ADMINISTRATION

A. General - Four groups are involved directly in matters affecting parking management on campus: the Committee on Campus Parking (which makes policy recommendations to the President of the College); the Department of Campus Security (which has the responsibility of enforcing these regulations); the Department of Parking Services (which administers the parking registration program, enforces parking regulations and provides the resources for the maintenance and upkeep of the parking lots); and, the Traffic Appeals Board (which can overturn an enforcement action).

B. Committee on Campus Parking (CCP) The Committee on Campus Parking develops and recommends policies for the management of the parking resources on the campus. CCP is composed of four students, one representative of the teaching faculty, one representative of the non-teaching staff, one representative of the Administration, the Director of Security and the Director of Auxiliary Services. The chair is named by the President of Auxiliary Services.

C. Traffic Appeals Board (TAB). The Traffic Appeals Board reviews decisions of the traffic hearing officers. The decision of TAB is final. TAB is comprised of two students, one member of teaching faculty, one member non teaching staff and one member of professional staff appointed by the President. The chair is appointed by the President of Auxiliary Services.

D. Department of Campus Security (DCS). The role of the Department of Campus Security is limited to enforcement except as specifically noted in these regulations. Campus Security officers are responsible for the enforcement of these regulations as well as any other such laws and regulations that may apply.

E. Department of Parking Services (DPS). This department operating under Auxiliary Services is responsible for the administration of parking services (deal sales, enforcement, adjudication coordination and fine collection).

IV. PROCEDURES

A. Registration

1. Who must register. All individuals associated with the college who park on college property must register their vehicles. Vehicle registration entitles the individual to park only in designated parking spots and lots if space is available.

2. When to register.

a. Faculty/Staff. Incoming faculty or staff services office as soon as possible after appointment. Parking registrations issued by the parking services office vary in length of validation depending on employee position classification. The times and places of registration will be announced by the Department of Parking Services. As a convenience to the Faculty/Staff the Department of Parking Services will endeavor to complete parking registration through the mail.

b. Students. All student registrations are for a specific period, either for the entire academic year or for the fall or spring or summer sessions. The times and places of registration for continuing students and initial registration for new students will be announced by the Department of Parking Services. Pre registered students will be able to purchase their decals through the mail.

3. Permits. One permit will be issued when a vehicle is registered. The permit must be removed if association with the college is terminated or the vehicle is sold. Vehicles are considered registered only when the issued permit is properly displayed. Any permit obtained through misrepresentation or in violation of these motor vehicle regulations is void. Should the vehicle be sold a replacement permit can be obtained by removing the permit and bringing the remnants to the parking services office along with vehicle registration and college id.

4. Registration revocation. If a registrant is disciplined by revocation of campus parking privileges or cancellation of college registration, the revocation applies to any motor vehicle registered in the registrant's name for on-campus use. The revocation of a campus motor vehicle registration and a loss of parking privileges for the balance of the academic year may occur upon a finding that seven parking violations have been incurred during a calendar year.

5. Change of ownership. A campus parking permit is not transferable.

B. Parking

Where to Park

a. Campus parking lots are limited for use by motor vehicles assigned to these areas (staff vehicles in staff lots) during restricted hours. Each parking lot is identified by signs at the entrance. Parking is not permitted in locations not explicitly identified for this purpose, such as roads, parking lot aisles, walkways and grass areas. A certain number of spots have been added as approved for parking where gravel has been spread. Other than the gravel lots parking is permitted only within spaces marked for parking by parallel lines (white or blue) on pavement.

2. Permitted hours.

a. On days that classes are not in session lots are open to all motor vehicles. Faculty/Staff lots are restricted on all work-days.

b. Parking in faculty/staff lots is restricted to holders of faculty/staff permits from 7:30AM - 6:00PM Monday through Friday. After 6:00PM any registered vehicle may be parked in these lots. Designated reserved spaces are restricted at all times i.e. disabled parking spaces, loading zones and spaces designated as reserved for specific staff or departments.

3. Improper parking.

a. The assignment of a parking permit does not guarantee a space. The driver is responsible for finding an approved spot for the vehicle. Parking closest to one's building cannot be guaranteed. However, for everyone's convenience there are shuttle busses operating on a frequent schedule.

b. All drivers are cautioned that the college, having marked approved spaces, does not mark all areas where parking is prohibited. An area not so designated is not considered a legitimate parking area. An approved space is designated by

parallel lines painted on the pavement.

NOTE: Certain unimproved lots are not lined out for parking purposes so that the definition of approved spaces does not apply.

V. SPECIAL REGULATIONS

Restricted Areas.

1. Loading zones - Deliveries

Certain buildings on campus are provided with a loading dock or zone adjacent to the building. Parking is not permitted in loading zones. Standing is permitted in loading zones for deliveries or pickup only. Standing is presumed not to exceed 15 minutes. Vehicles used for pickup or delivery requiring more than 15 minutes must be attended. An attended vehicle is defined as one with a qualified driver in attendance who is able to move the vehicle on request. Loading zones are not meant as places for the pickup or discharge of passengers.

2. Fire zones and fire lanes. Fire zones are established by the fire department. Fire zones are areas that permit fire fighting equipment to come close to a building and areas around a fire hydrant or stand pipe connection. Parking or standing vehicles are not allowed in a fire zone at any time and any vehicle so parked or standing i.e. subject to ticketing, booting or towing.

3. Walkways. NOT paved way on the campus that is not defined as a roadway is by definition a walkway. Driving on walkways is not permitted except under emergency circumstances. Emergencies refer to the need to bring service, fire, rescue, ambulance and security vehicles close to a building in order to safeguard lives or property. Certain walkways are designated for use in this manner by appropriate signs. Use of walkways by others is forbidden.

• Dedicated spaces. The only dedicated spaces that have official sanction are those established by the DPS for campus vehicles, emergency vehicles, handicapped parking and designated members of the campus administration.

5. Dumpster areas. These areas are designated NO PARKING OR STANDING at any time.

B. Special vehicles.

1. Campus vehicles - cars and trucks. Reserved spaces for campus vehicles may be provided at college buildings. Campus vehicles are required to park in these spaces. They cannot use walkways nor may they park in unauthorized areas unless they are on an emergency call. Drivers of campus vehicles are liable for tickets issued to vehicle.

2. Campus vehicles - buses. Campus buses are subject to all campus traffic regulations. Buses parked at any building for the purpose of loading or unloading passengers for field trips or excursions must not obstruct traffic in the roadway or interfere with campus operations. Bus drivers should pick up passengers only at designated bus stops. The disabled services van is permitted access on service walkways on a regular basis to pickup and drop off passengers as close as possible to accessible entrances of buildings.

3. Vendors. The college enters into contracts with several firms that provide support services to the college. An example would be copy machine repair, telephone repair, elevator, kitchen equipment etc. Vehicles belonging to such contractors are treated as campus vehicles for parking needs. The contractor must apply to the parking services office for an appropriate permit. Requests for permits must be submitted in writing, on company letterhead and signed by responsible officer of the company. These requests must describe the vehicle(s) and identify individuals driving them. When the request is received it will be verified by the parking services office with the department director for whom the work is being done. In general, such permits will be issued for a motor vehicle that is clearly required for contractor service. Such permits are valid only for the period the service person is on duty in a given building. Under no circumstances are these to be considered parking permits. Proof of on call status will be required by officers charged with enforcing the traffic regulations.

4. Salespeople. Salespeople coming to the campus are required to obtain temporary one day guest parking permits. These can be obtained by having the individual being visited contact the department of security with the name of salesperson, year, make and license plate of car driven.

5. Construction vehicles.

a. Parking. Contractors working on campus are required to observe all traffic regulations. Such vehicles need not register with the department of parking services, provided they park within contract limit lines, in an area physically separated from campus parking zones.

b. Operations. Contractor vehicles may not park in roadways for loading or unloading or for operation of special equipment without prior written approval of the Director of Security. Written approval will state the special conditions under which such vehicles may park or stand on roadways. The approval must be in the vehicle at all times, available for inspection by security or parking enforcement officers upon request. Failure to present such permit on demand will subject the driver/operator to appropriate citation. Contractor vehicles may not drive on walkways except under the conditions outlined elsewhere

in these regulations.

6. Motorcycles. Operation and parking of motorcycles and mopeds are regulated the same as other vehicles. Motorcycles and mopeds may not be driven on walkways nor parked close to or inside buildings.

7. Campers. Camper vehicles, used for ordinary transportation are subject to the same regulations as other vehicles used for commuting. Camper vehicles may not be used for residence purposes on campus.

Special operations.

1. Handicapped persons. Handicapped members of the college community may apply for special parking permits distributed by New York State to the individual's home municipality. This pass or plate when accompanied by a valid CSI Parking Permit allows the individual to park their vehicle in spaces lined in blue paint and/or a handicapped parking sign. Members of the college community may also apply for CSI Temporary Disabled Parking Passes from the Department of Parking Services. These pass permits vehicles access to spaces designated with CSI Temporary Disabled Parking signs. Those persons receiving CSI Temporary Disabled Parking Passes are not eligible to park in the above mentioned blue lined handicapped parking spaces.

2. Visitors. Visitors may obtain a daily parking permit at the main gate by contacting the individual they are visiting and having their host contact the department of security to arrange for a visitors pass. The individual should provide their name, year, make and license plate of car.

3. Reciprocity. IBER & SYDDSO

4. Disabled vehicles. If a vehicle becomes disabled on campus and requires assistance from a service station (for towing) security must be notified immediately. Vehicles are permitted to be left overnight on campus with valid reason and with direct notification and subsequent approval of the Department of Security. Security may require the vehicle be moved to a different location particularly during a snow emergency.

5. Engine idling. Engine idling is prohibited in service areas that are totally or partially closed. Exhaust fumes can be released into building through their air handling systems. Violators will receive campus citations.

VI. ENFORCEMENT

A. General. Parking on the campus is controlled by these regulations and certain applicable provisions of the New York State Vehicle and Traffic Laws. Statements by college employees, if made in error regarding the suitability of parking in a certain area, does not relieve the driver of responsibility. If extraordinary emergency circumstances arise, the driver must notify the parking services office immediately, identify him/herself and describe the vehicle and its location. Regulations Summary:

1. All motor vehicles on campus must display the appropriate campus permit. Violation...No permit displayed. Grade III.

2. Vehicles must be parked only in parking zones authorized for the vehicle. Violation...parked in wrong zone, i.e. vehicle with student decal in staff lot or reserved spot. Grade III.

3. Vehicles must be parked within the lines designating an authorized parking space. Violation...Not parked within parallel lines. Grade III.

4. Vehicles may only be operated on authorized roadways and parking lots. Violation...Driving in an unsafe manner. Grade II

5. Vehicles must be operated in a safe manner, on campus at all times to avoid endangering or injuring pedestrians, property, other vehicles or other drivers. Violation...Driving in an unsafe manner. Grade II.

6. Motorists may not exceed posted speed limits at any time. Violation...Exceeding posted speed limits. Grade III.

7. Vehicles may not stand or be parked in any manner which obstructs fire hydrants, emergency vehicles or vehicles carrying out of college business. Violation...Standing or parking in a no parking or fire zone. Grade III

8. Parking is prohibited on campus roadways at all times, including access roads, service roads, walkways and parking lot aisles or entrances. Violation...Parking in an area that may interfere with vehicular or pedestrian traffic. Grade II.

9. When driving on campus motorist must obey state and college regulations. This includes posted signs and the direction of college personnel responsible for traffic control. Violation...Driving in an unsafe manner. Grade III.

10. Vehicles cannot be parked overnight on campus without authorization from the Campus Security Office. Violation...Unauthorized parking. Grade III. An abandoned vehicles subject to towing and storage charges at owners expense.

11. Vehicles parked in handicapped spaces must display appropriate college registration and a valid handicapped parking permit. Violation...Unauthorized use of disabled

parking zone. Grade I.

12. Under no circumstances may vehicles be parked in an manner which obstructs fire hydrants, emergency vehicles or vehicles carrying out of college business. Violation...Obstructing campus operations. Grade II.

13. Vehicles are not permitted to pass buses stopped on roadways, which are displaying flashing 4-way signals. Violation...Driving in an unsafe manner. Grade II.

14. Engine idling in enclosed areas is not permitted. Violation...Unauthorized parking. Grade III.

15. Any other violation of these regulations or other applicable law not summarized herein. (To be specified on the summons.)

Grade I Violations...\$40.00.

Grade II Violations...\$20.00.

Grade III Violations...\$15.00.

If Summons is not paid within fourteen days, a late fee of \$5.00 will be imposed.

Enforcement Activities.

1. Ticketing. Officers are empowered to issue summonses to vehicles found in violation of all traffic and parking regulations. Summonses are issued in accordance with provisions of Section IV A.

a. Cited Violators

i. Each issued summons must be answered by paying the fine or by filing an appropriate appeal at the Parking Services office. Fines may be paid at the Parking Services Office or by mail in the form of personal check or money order. Cash will be accepted at the Parking Services Office but should not be sent through the mail.

ii. Failure to pay a summons when due may result in the imposition of a late payment fee.

iii. Further failure to pay summons may result on a written appeal.

i. A further appeal of a hearing officer's decision may be made to the TAB, in writing, within, 10 days of the decision rendered by the hearing officer. The TAB will consider submitted appeals at its scheduled meetings. Decisions of the TAB will be mailed to the appellant within 14 days of the board's decision. Decisions of the TAB are final.

ii. Reports of repeated violators as well as persons charged with violations and unusually serious offenses who have failed to respond to an issued summons, may be referred to the TAB. The board may assign appropriate penalties and may refer an offender to the appropriate university officials for further disciplinary action.

2. Immobilization. Booting

a. Repeat violators who have two or more outstanding summonses will have their vehicle booted. A summons is considered outstanding when the fine has not been paid and the summons has been adjudicated in accordance with this policy. The boot will be removed when the outstanding indebtedness is satisfied.

b. Vehicles parked in handicapped designated spots are subject to ticketing and booting.

3. Towing.

Vehicles liable to towing. Vehicles parked illegally or which constitute a safety hazard or interfere with college operations or not removed upon notice, anywhere on campus, are subject to being towed. Vehicles towed are done so at the owner's expense. The owner will also be liable for any penalties charged by an issued summons citing the violation for which the vehicle was towed.

Additional Sanctions

1. Students

a. Privilege suspension. A student with one or more outstanding summonses will not be permitted to register a vehicle for the following registration period.

b. Students with one or more outstanding summonses will have a BLOCK put on their records. This block will prevent the student from registering for classes, receiving a transcript or obtaining a diploma.

2. Faculty and Staff

a. Privilege suspension. An y faculty or staff member with one or more outstanding summonses will not be permitted to register their vehicle for the following registration period.

b. Faculty and Staff with one or more outstanding summonses will have letter of advisement sent to department chair, director or dean.

c. Faculty and Staff with two or more outstanding summonses are subject to salary garnishment.

Are we blind yet?

Delta Services

Hours of Operation

982-3035

August 29 - September 30, 1995

1C-228

DINING SERVICES

Campus Center Cafeteria

Monday - Thursday
7:30AM - 7:30PM
Friday
7:30AM - 4:30PM
Saturday & Sunday
8:00AM - 2:00PM

Park Cafe

CSI's own restaurant
Monday - Friday
11:30AM - 2:30PM

Food For Thought (Library Cafe)

Monday - Thursday
8:00AM - 8:00PM
Friday
8:00AM - 2:00PM

Food Carté

(North Administration)
Monday - Thursday
10:00AM - 2:00 PM

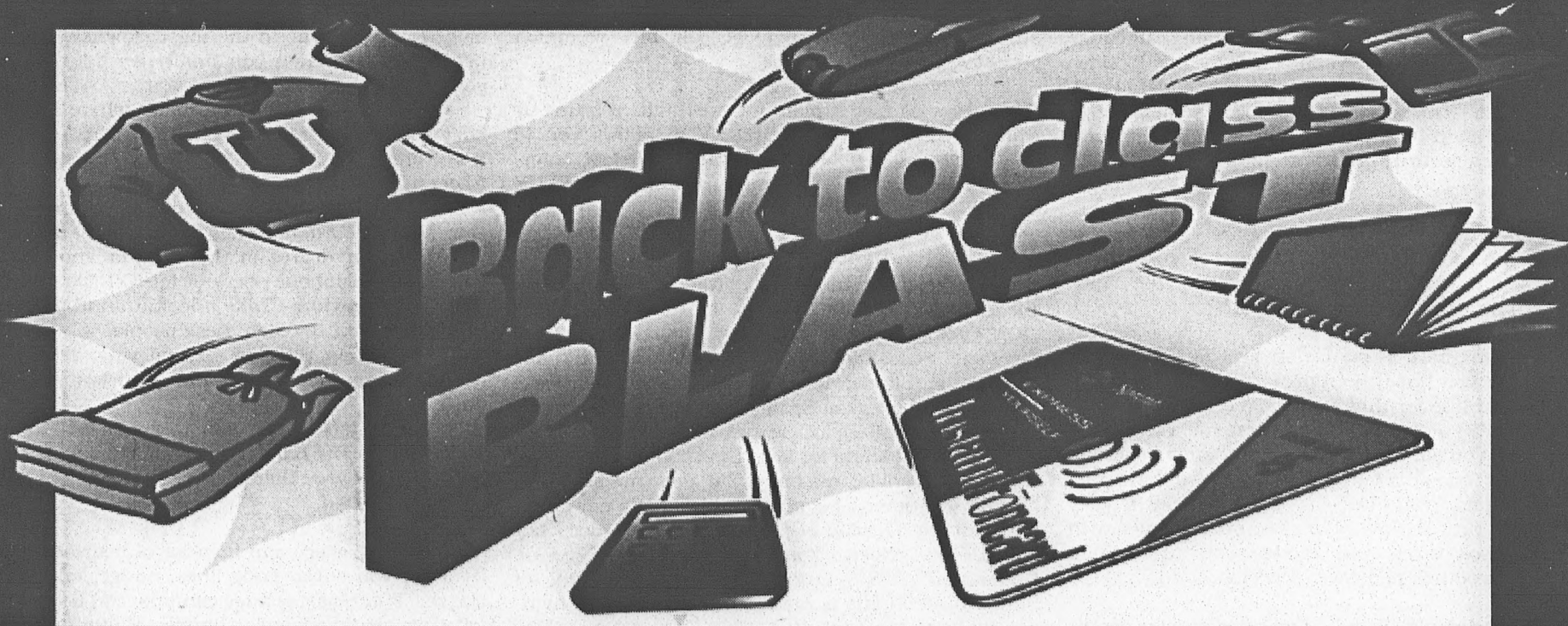
PARKING

Decal Sales From Ticket Booth

Thursday August 31
10:00AM - 7:00PM
Friday September 1
10:00AM - 4:00PM
Saturday 2 - Sunday 3
10:00AM - 2:00PM
Tuesday 5 - Thursday 7
10:00 - 7:00PM
Friday 8
10:00AM - 4:00PM
Saturday 9 - Sunday 10
10:00AM - 2:00PM
Monday 11 - Thursday 14
10:00AM - 7:00PM
Friday 15
10:00AM - 4:00PM

•Commencing September 18 decal sales will be moved to 1A-102.

CSI BOOKSTORE



Sunday	Monday	Tuesday	Wednesday	Thursday	Friday	Saturday
closed	28 8:45 TO 4:45	29 8:45 TO 8:45	30 8:45 TO 8:45	31 8:45 TO 8:45	1 8:45 TO 7:30	2 8:45 TO 4:45
3 8:45 TO 4:45	4 CSI CLOSED	5 8:45 TO 8:45	6 8:45 TO 8:45	7 8:45 TO 8:45	8 8:45 TO 7:30	9 8:45 TO 4:45
10 8:45 TO 4:45	11 8:45 TO 7:30	12 8:45 TO 7:30	13 8:45 TO 7:30	14 8:45 TO 7:30	15 8:45 TO 4:45	16 10:00 TO 2:00

Free Sprint Phone Cards Good For 5min of Long Distance to First 500 Customers Beginning August 29th



Sprint

EL Grande 15 oz. Mug
NOW \$3.99
Regularly \$5.95

High Sierra Briefcase
NOW \$29.99
Regularly \$42.98

DayRunner Academic Organizer
NOW \$8.95
Regularly \$12.99

BOOKSTORE SPECIALS

Merriam Webster Collegiate Dictionary
NOW \$15.95
Regularly \$22.95

Dry Erase Ultralight Board
NOW \$2.99
Regularly \$4.95

Eveready 8-pack AA Batteries
NOW \$5.99
Regularly \$8.99

PISSSED OFF!

FRESHMAN SURVIVAL GUIDE

By Rich Arroyo, Mike Garofalo, and Chris Zeyer

This summer the "pissed off" people of C.S.I. did nothing but pure evil. We can't tell you what because there is still some litigation pending. Let's just say that we found the value of a case of fireworks and an oil refinery. Well, we feel should give something back to the community, so this issue we decided to write some helpful hints to the freshman. In a college with so many... quirks we feel the freshman could use some help.

Pizza - Don't eat after 4 PM... Try to eat it between 11 AM and 11:10 AM. There's a Pizza addiction factor, the more you eat the more you salivate over the next starch filled slice. Oil in pizza serves as a substitute for mousse (see Editor-In-Chief).

Parking - We recommend you don't drive, leaving spots for the people here before you. If you do drive, the rocks are quality or Lot 6 - "Easy Parking". You are not authorized to park here stickers... they come off with water, no scraping needed.

CUNY Cops - are not allowed to give you a Body Cavity Search.

Clubs - Join a club for every day of the week so you can get free food at meetings. G.L.O.'s CAN NOT haze or pledge you. They must let you join... Guys hard up for a date?? Join a sorority... Finally you won't be rejected, They have to take you too. Just so the clubs don't get pissed, find out about free advertisement in *The Banner*. We're a weekly so we're gonna need filler. Call 982-3199.

Registration - Be nice to the registration staff cause with one key stroke they can ruin your life. Besides lets see how perky you are after 8 hours of data entry and saying, "This class is closed." Remember to have your shots or they will pull your registration faster than a security guard catching you smoking in 6S.

Financial Aid - Nothing can prepare you... for the wait. Bring a friend... bring a book... bring a chair... bring a gun. **WARNING**— Do not cross the lines, people have been mortally wounded.

(Sidenote for both Registration and Financial Aid, make sure you have the right form and that you're on the right line for that matter. And learn the word "Overtalley". You won't believe what you gotta do to get one. If you get to see your advisor after freshman orientation, consider yourself lucky cause they won't be looking for you. Hell... you'll be lucky if they remember you. Seriously, make appointments with your advisor when you receive you registration papers so you will not have problems.)

Campus Drinking Water - For some reason people don't want to drink it, even though it was proven safe. Why break the trend.

Here some rumors about the buildings we would like to dispel:

3A - Rumors are it's haunted by the patients of Willowbrook State School. Students never have to go there... so don't worry about it.

6S - It was never used as a crematorium even though it looks like one.

1M - Also never used as a crematorium.

3rd floor library, stairwells, bathrooms, and the Great Lawn are not used for sexual deviance. (MMMM... if the Ictus couch could talk.)

Sculptures - Just pretend they're art... administration did. And just so you freshmen know, putting a pumpkinhead on the statue in front of 2N has been done. We thought the blue statue outside of 3A was the thing from *Tron*, but if you walk up close to it, you'll find we were very wrong. We weren't disappointed, just wrong. And Pissed Off checked. The wood rock thing by 2A is really a sculpture. Also, don't let the garbage cans around the thing in front of the library fool you... it's really art.

Food - Most items are 15 to 20 cents more on campus. Please be nice to Rosie, she's a sweetheart. If you want candy... don't go to the vending machines, go to 1C-228. And for those who are cheap, buy your bagels in the library cafe rather than 1C... it's cheaper.

Sports - What sports? Remember, we have the best N.C.A.A. division three teams on Staten Island. We personally like the idea of a twenty million dollar facility on campus right after the retrenchment committee cut gym classes. Your tax dollars at work.

The Student Activity Fee - For those of you who actually read your bill, \$53 dollars goes to administrators and student elected officials into the following groups: Student Government, WSIA, PDC, etc...

Student Government - They're willing to buy your vote. Look for upcoming elections and get a dollar off lunch. (This is also when you can vote yes for free press this fall!!!)

W.S.I.A. - The most powerful 10 watt station... so powerful GOD had to strike it down with lightning this summer. We understand to get the best reception you have to move to Texas.

PDC - How can we explain it... we'll take it frame by frame... that's enough of that. PDC allows you to play ping-pong, fusbball, and watch musical entertainers. Hey how else are you supposed to get CLUE credits.

Bad CSI Acronyms:

Freshman might be a little confused with all the abbreviations on campus, here's a list of they **DON'T MEAN**. Just so you know, TBA does not stand for "The Best Adjunct". CSI does not stand for "College of Stoned Illiterates", "Cracked Sidewalk Institute", "College of Spades Inclined" (see Campus Center), or "College of Stupid Italians". The PELL grant does not stand for Poor Emaciated Loser Loan. (We spelled it right this time.) TAP does not stand for "Totally Anyomous Payments". PDC does not stand for "Pathetic Display of Capital". NYPIRG does not stand for "Need Your Petition In Revenue Generation". WSIA does not stand for "Waves of Static In Air". Ictus is not a fish disease, it's a high-quality literary magazine. LGBSA does not stand for "Let's Get Better Student Apathy". However, *The Banner* does stand for "Bring Another New Neurotic Experienced Reporter" and CUNY does stand for College of Underpaid New Yorkers.

Things Not to Bring to Campus:

Bills over 20 dollars, just try and get change. A hackey sack... A deck of cards... Diesel fuel and fertilizer... Your car, we need your space... A broadsword, it's been done before... Your mom... Your friends that are still in high school... McDonald's... Your SAT scores, you won't need them here... OJ evidence... Shuttle bus schedule... Karaoke machines... Ideas to write for the NY Newsday...

Flyers for parties at Bay Street... Radical political views, conservative political views, hell all political views... Cellular phones, if you're so important what are you doing here?... Delusions of Grandeur and your sanity.

Things To Bring to Campus: A SENSE OF HUMOR.

Here's Some Tips For Each Major:

Communications - Better get used to your classmates cause you will be seeing them for the duration of your stay at C.S.I. We don't want to tell you what you have to do to get an overtalley.

Music - Make friends with PDC, hundreds of dollars in gigs and a free lunch. Don't forget to bother John Ladley at WSIA to use the 32 track recording studio. (It's for members only.)

Phy. Ed. - Due to budget cuts, it's time for you to transfer.

Business - Obviously C.S.I. was not your first choice. (Mike had nothing to do with that last one.)

Economics - After taking your courses, please explain to us Gulliani's budget proposal.

Women's Studies - We recommend you join *The Banner* and teach the male members political correctness. (Mike had something to do with this line... Happy Valentine's Day, Mike's penance for his comments in the Valentine issue is a Sociology of Womens class. Don't hurt him too much.)

Computer Science - Don't ever graduate... you'll never find another million dollar net to play Doom or Marathon on.

Art/Photography - Hope you enjoy waiting two years of your life for a class to be offered. Look at it this way, your in the most expensive building (39.7 million). When you finally get your diploma, you could explain to us those statues to us?

Nursing - Your in a major where a 3.5 just isn't good enough. We recommend a recommendation from GOD or Springer, whichever one is easier to get in touch with.

Psychology - We would like to inform you that a former *Banner* staff member just graduated with a 4 year degree in this subject and now she works as a telephone operator for NYNEX.

Education - Take a look around you, see if you really want to teach these people.

Cinema Studies - Bring your own remote control. How many times can you watch Citizen Kane.

English - After you take English 111 and 151, come to *The Banner* office and explain to us the difference between there, their, and they're as well as to, too, and two.

The college can be a lot of heartache if you let it get you down. Long lines, budget cuts, closed classes, long classes, huge campus, can be too much for a newbie, or anyone to handle. Maintain a certain sense of humor and you can make it through.

Use Hidden map in this text to disguise the fact that you don't know where anything is. People will just think you're reading *The Banner*.

Do You Know Where Your Student Activities Fees Go? - An Update

By Christopher Zeyer

In the November 21, 1994 issue of the Banner I wrote a commentary about the college's use of our student activity fee. I explained what it is and where the money goes. I also critiqued the allotment of money. Well, it's been almost a year and there have been some changes. This is just an update on the fees.

First a reminder: on your bill you should have a section called "Student Activity Fee". This is a mandatory payment is \$53.00 for full-time students, and \$27.00 for those who are part-time. This money is allocated to various groups on campus and used accordingly. In "The Gazetteer" there is a breakdown of the money. At first reading this I was offended which is why I wrote the first piece. This time I'm a little calmer, but still annoyed. Let's go through the breakdown.

Student Government receives \$13.79 from full-time and \$5.70 from part-time. They are student elected officials that allocate money and voice our opinions to the school. They are a necessity to the school, even though they sometimes bicker at each other like little children who missed nap time. You are allowed to attend the meetings if you want to find that out for yourself. They do work to benefit the students and they did something

this summer that I approve of.

They cut funds to clubs in half. Before, if you started a G.L.O. (Greek Letter Organization) or club, you were given a thousand dollars for a budget. This money would be used for food at meetings, advertising, things of that nature. Now, they are only getting five hundred dollars and that takes a burden off of the students. Personally, I feel the clubs should just get start-up money and that's it. If a student doesn't want to join and organization, he or she shouldn't have to pay for it. So, student government has redeemed itself a little.

My question still stands about the "Association" which gets \$11.33 from full-time and \$4.02 part-time. What does it do? The Gazetteer explains they prepare "all accounting records" and maintain "all budget/expenditure reports". Well, isn't that what Student Government is supposed to do? I still like my idea of merging the two groups together into one entity. They pretty much do the same job. If they were together, you could cut money off of the S.A.F. and I feel more would get done. Everybody that is making the decisions in one room. Proposals wouldn't have to go through committee after committee where the original idea gets so twisted and changed that's it's not what you wanted at first. Let's change the sub-

ject.

Intramural/Recreation and Program Development Committee are two separate groups that receive money. I/R receives \$2.42 from full-time and \$2.50 from part-time. PDC receives \$5.46 from full-time and \$2.36 from part-time. I put these two groups together because they do the same job. They both are there to entertain students, they both help with CLUE credits; they should be combined. If you put them together and cut twenty percent of the money, I feel they could both function and the students wouldn't suffer. Student Government should look in to that. These groups aren't my biggest pet peeve, though; NYPIRG is.

In my opinion, NYPIRG is the most worthless thing on campus that drains money from students. It receives \$3.00 from full-time and part-time students. It stands for New York Public Interest Research Group and they are not needed. The only productive things it's ever done is the voter registration campaign and helping students with small-claim court cases. But that's it. I feel more than confident that if this group wasn't around, one or two of the clubs would do these programs. And they would do it for less money. Where were they when hazardous material was found in 2N or when the Environmental Club was

petitioning for a recycling program on campus. I didn't see them around. Student Government should reevaluate their worth and get them off campus. The Students should too. A point of information, you could get your money back from NYPIRG. Just go up to their office and tell them you want your money back. If they don't send you your money in check form, come go to Association and report them. Or come to *The Banner* office (1C-228) and tell us.

I've gone through all my complaints, here's some things where your money is going to that is good. The radio station, University Student Senate, Intercollegiate Athletics, and the Children's Center. All together they receive \$17.00 from full-time and \$9.42 from part-time. These programs are worthy. We have one of the best college radio stations in the country (REALLY), our sport teams bring school spirit, the senate gives us proper representation, and the day care center helps single or working parents that want their children by them.

The Student Activity Fees are not perfect. In the past year, there has been changes and that's a good thing. It still has a long way to go in my opinion in order for me not to critique it in this fashion. Let's see this year is groups can prove the worth of our money.

The Campus Center

Welcomes you back to the College of Staten Island

Lockers Available
for Rental in the
Campus Center
\$5⁰⁰ deposit \$5⁰⁰ rental
For the semester

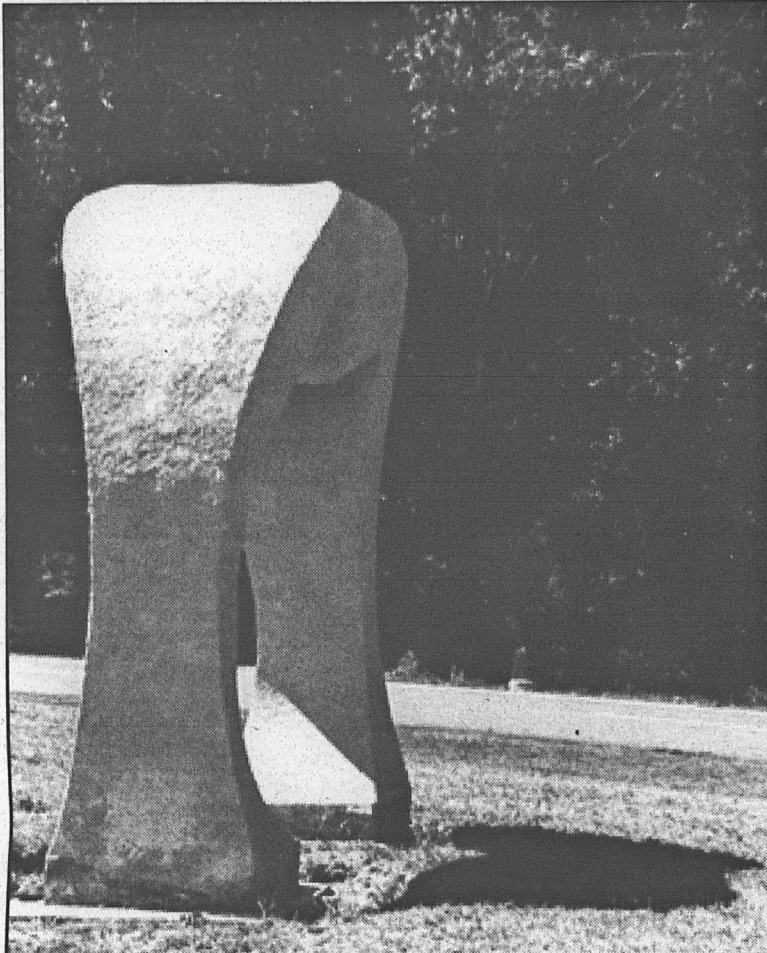
VIDEO GAME ROOM
Receive a blue token in the changer
and exchange for 10 free tokens.
On your birthday, bring proof to the
Office of the Campus Center and
receive 20 free tokens.

For more
information, come
to the office of the
Campus Center in
1C-107D

ART, OR JUST SEXISM?

By Jennifer Valle

While walking by the 3A Building, I noticed a new, blue sculpture. Thinking it was something out of a Star Trek episode, I advanced towards it for

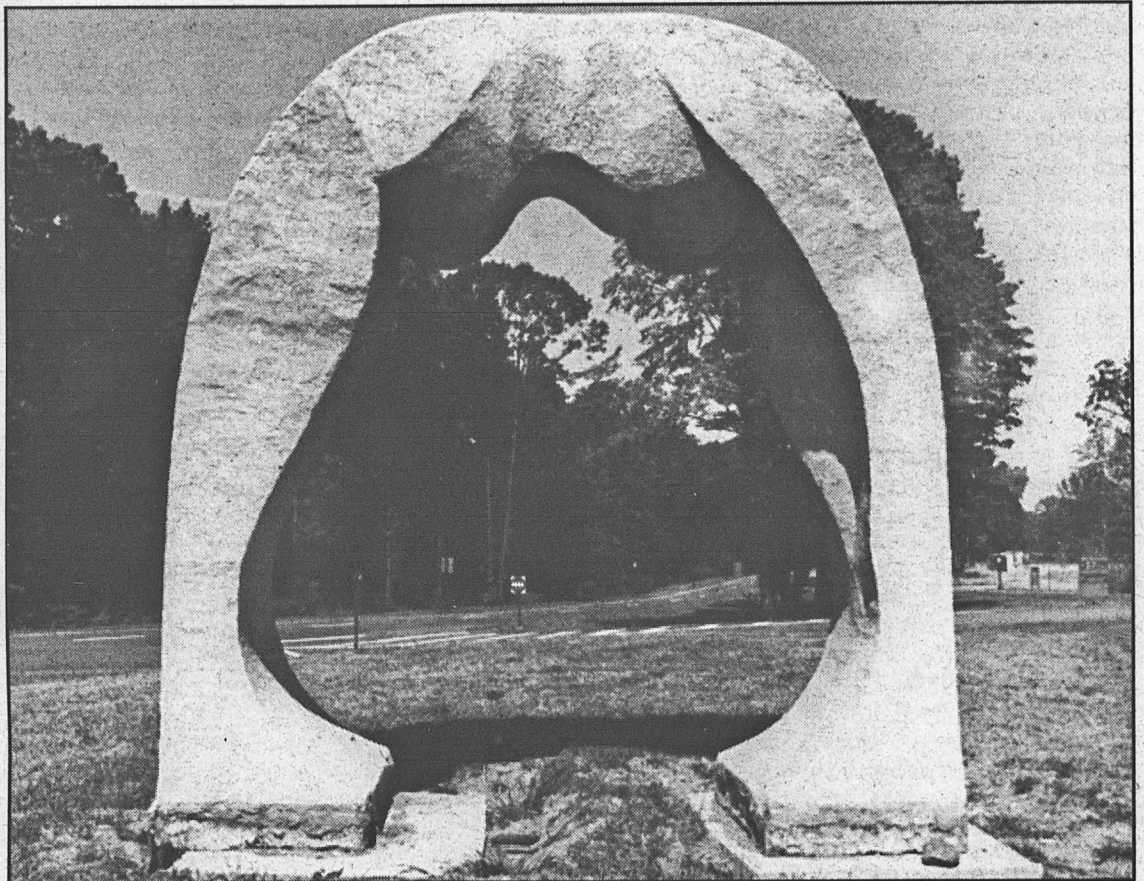


closer inspection. What I found was truly horrific and highly offensive. The sculpture is of a nude female bent forward with, what appears to be, her buttocks in the air. The fact that the female is in a known sexual position is enough to anger me but what furthermore offends me is the fact that the statue is blue, a color known for its passivity and submissiveness. There is no face to the giant blue woman which leaves a further dangerous message:

full submission of all woman to a male dominated world.

Not only is this a sexual innuendo, but a play on the role of woman when it comes to power. Take, for instance, the stance in which the artist has chosen. The woman has her head bent down, in true submissive style.

mocked, I can understand the sculpture titled "Big Stride." "Big Stride," in my interpretation, seems to be a woman surviving through the seasons of time... time having taken her arms and head, but her soul still pushing forward, battling the elements. I have taken a few art classes and I can see into some of the sculptures but the big blue sculpture represents



Furthermore, her buttocks are in the air in a form of offering, as if she has nothing to contribute of herself... save her body. The message portrayed in the stance alone is one of low self esteem, complete submission, and powerlessness as to problems that the world may cast at her.

For a College to host such pornographic and degrading material is immoral, unethical, and says little for 62% of its population. Although it was

nothing to me except sexism towards woman who are powerless to stop it.

I believe that although the sculpture was donated, it should be dismantled and returned to its creator because, although each artist has a right to express themselves, students shouldn't be subjected to such blatant disrespect as is emanated through this "art" piece.

**MEN'S
BASKETBALL
TEAM MEETING**
Thursday,
August 31, 1995
Time: 2:30
1C-109
Bring your
schedule & a
pen or pencil

← This is a plug for our chicken.

NOW SERVING MOUTHWATERING TURKEY

REID AVE. **KENNY ROGERS ROASTERS** OLD TOWN RD.
HYLAND BLVD.

**1409 HYLAND BLVD.
351-9300**

This is a plug for theirs.

At Kenny Rogers, we use a traditional cooking method that's over 200 years old. We slow-roast our chicken over a real hardwood fire to lock in all that juicy wood-roasted taste. We think it's the only way to roast chicken. Especially if the electric goes out.

AMPLE PARKING

SHOP RITE **KENNY ROGERS ROASTERS** DAKOTA FOREST AVE. DINNER RICHMOND AVE.

**939 RICHMOND AVE.
370-0500**

COMPLETE MEAL DEAL
ONE QUARTER CHICKEN, TWO SIDE DISHES,
ONE MUFFIN, ONE BEVERAGE
(EXTRA CHARGE FOR ALL WHITE MEAT)
\$3.99

LIMIT 1 COUPON PER PERSON, PER VISIT, THIS OFFER NOT VALID WITH ANY OTHER SPECIAL. GOOD AT STATEN ISLAND LOCATIONS ONLY. COUPON EXPIRES 12/31/95

\$1.00 OFF
ANY HALF CHICKEN DINNER
(EXTRA CHARGE FOR ALL WHITE MEAT)

LIMIT 1 COUPON PER PERSON, PER VISIT, THIS OFFER NOT VALID WITH ANY OTHER SPECIAL. GOOD AT STATEN ISLAND LOCATIONS ONLY. COUPON EXPIRES 12/31/95