

associate executive director.

But saving money is a side benefit, Magee said. The real focus is on having state-of-the-art facilities to use for their programs.

"The whole thrust of this is to give our people a better, cleaner, safer environment in which to receive the programs that we offer," said Harry Friedland, executive director.

Housing the Day Treatment Center and the Vocational Training Center in the Travis building, for instance, will make it easier to move clients between the two, Magee said. About 400 clients will use the building every day.

Day Treatment offers programs for adults with severe and profound developmental disabilities where they learn skills for daily living.

The Vocational Training Center includes the Sheltered Workshop, which does work as sub-contractors in light assembly, packing, sorting and similar tasks. It also includes a food service program and a maintenance training program, as well as remedial education.

The two-story main campus building will include a cafeteria that can be used both as a space to eat and as a training site for clients to learn the food service

industry. The agency's sheltered workshop will have a new production facility and a warehouse. Office space, classrooms for the Day Treatment Program and a view of the William T. Davis Wildlife Refuge will also be included.

Mary Thompson, director of development and community affairs for Community Resources, said the cafeteria will also be open to the community for meetings and special events. The new building is near the Teleport and light industry that provides employment opportunities for clients, as well.

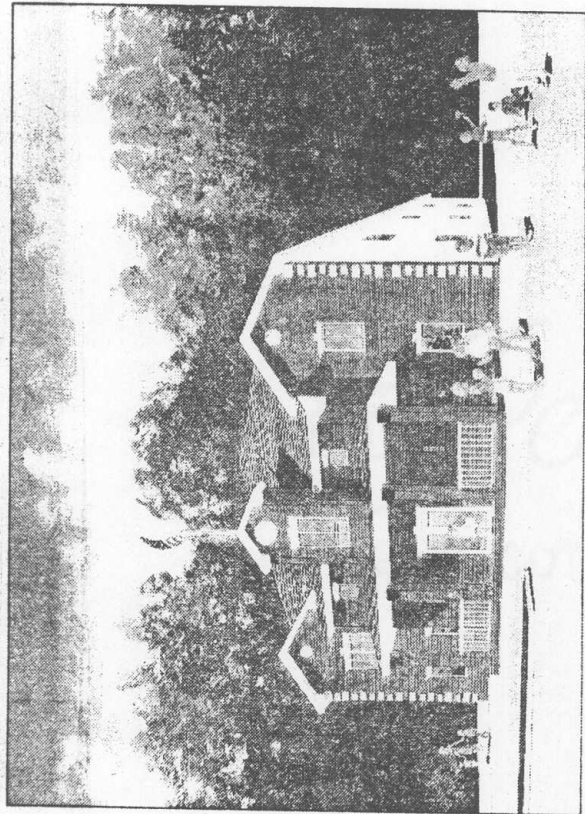
In Richmond, the new preschool will offer more space and a better facility for the youngest 50 of Community Resources' clients. The program aims at developing language skills, social skills, physical skills and ability to take care of daily living activities.

The new building will include classrooms, office and an outdoor playground.

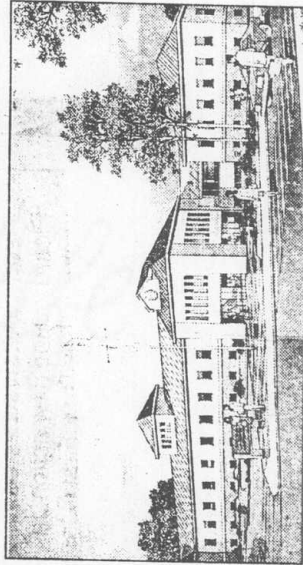
Friedland said Community Resources decided to move the preschool from Great Kills to Richmond partly in order to have it near other schools.

He pointed out that many of the clients now in the Vocational Training Center started out in the pre-school.

Magee said the agency brought its plans to Community Board 2 for a presentation earlier this year, but both buildings can be built as of right. Ms. Thompson said no residents or board members have complained about the plans.



This sketch shows what the new preschool owned by the Community Resources for the Developmentally Disabled will look like.



This artist's rendition shows the proposed school and headquarters of the Community Resources for the Developmentally Disabled in Travis.