

MONDAY, NOVEMBER 25, 1996

# New complex will join programs for disabled

*Construction on Community  
Resources for Developmentally  
Disabled building  
should take 18 months*

By EILEEN AJ CONNELLY  
ADVANCE STAFF WRITER

Community Resources for the Developmentally Disabled signed closing papers last week on the purchase of two plots of land for two new buildings, a large new school and headquarters in Travis and a smaller preschool in Richmond.

Construction is expected to begin within weeks on a 44,000-square-foot building at 3450 Victory Blvd. at the intersection with Signs Road, across the street from Nansen Park.

The new facility will enable the agency, formerly known as Staten Island Aid for Retarded Children Inc., to consolidate programs and offices from three buildings.

The administrative offices, now on Forest Avenue in West Brighton, the Day Treatment Center now on Seaview Avenue, Ocean Breeze and the Vocational Training Center, now on Bay Street in Tompkinsville will all move to the new building when it is ready in about a year and a half.

Work also is about to start on a new home for the agency's Joan P. Hodum Early Learning Center, a pre-school for developmentally delayed or disabled 2-to 5-year-olds that will be located at 3651 Richmond Rd., a few hundred feet north of St. Patrick's Place.

Both new buildings are being financed with a 30-year, \$13 million loan from the Industrial Development Agency of New York City. The agency will hold a separate fund-raising campaign to furnish and equip the buildings.

The new buildings will mean the non-profit agency can move out of three leased buildings, saving them the cost of real estate taxes and heating and air conditioning for the aging locations they now occupy, according to Dana Magee,

associate executive director.

But saving money is a side benefit, Magee said. The real focus is on having state-of-the-art facilities to use for their programs.

"The whole thrust of this is to give our people a better, cleaner, safer environment in which to receive the programs that we offer," said Harry Friedland, executive director.

Housing the Day Treatment Center and the Vocational Training Center in the Travis building, for instance, will make it easier to move clients between the two, Magee said. About 400 clients will use the building every day.

Day Treatment offers programs for adults with severe and profound developmental disabilities where they learn skills for daily living.

The Vocational Training Center includes the Sheltered Workshop, which does work as sub-contractors in light assembly, packing, sorting and similar tasks. It also includes a food service program and a maintenance training program, as well as remedial education.

The two-story main campus building will include a cafeteria that can be used both as a space to eat and as a training site for clients to learn the food service

industry. The agency's sheltered workshop will have a new production facility and a warehouse. Office space, classrooms for the Day Treatment Program and a view of the William T. Davis Wildlife Refuge will also be included.

Mary Thompson, director of development and community affairs for Community Resources, said the cafeteria will also be open to the community for meetings and special events. The new building is near the Teleport and light industry that provides employment opportunities for clients, as well.

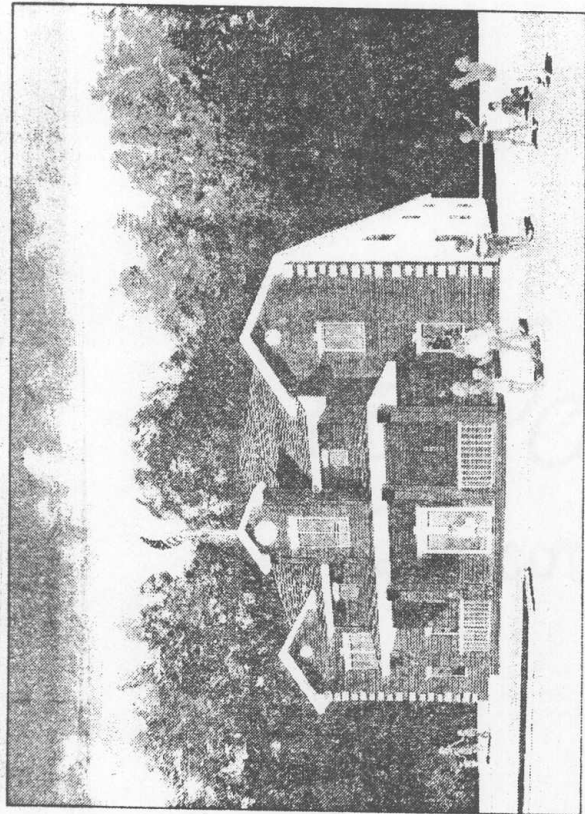
In Richmond, the new preschool will offer more space and a better facility for the youngest 50 of Community Resources' clients. The program aims at developing language skills, social skills, physical skills and ability to take care of daily living activities.

The new building will include classrooms, office and an outdoor playground.

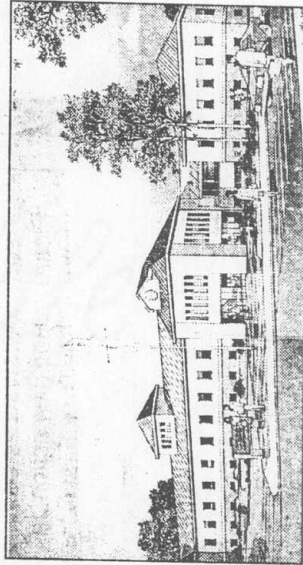
Friedland said Community Resources decided to move the preschool from Great Kills to Richmond partly in order to have it near other schools.

He pointed out that many of the clients now in the Vocational Training Center started out in the pre-school.

Magee said the agency brought its plans to Community Board 2 for a presentation earlier this year, but both buildings can be built as of right. Ms. Thompson said no residents or board members have complained about the plans.



This sketch shows what the new preschool owned by the Community Resources for the Developmentally Disabled will look like.



This artist's rendition shows the proposed school and headquarters of the Community Resources for the Developmentally Disabled in Travis.