

# Campsite

(From Page 1)

Volunteer searchers came across a suitcase filled with tattered blue workpants and other clothes when they originally found the site on Sunday. Police have been searching for a spot where Rand may have secreted his winter clothing and other personal items.

After searching through the campsite Sunday and finding no trace of Jennifer Schweiger's clothing, the girl who was murdered, the volunteers moved on without reporting it to authorities.

When detectives this week told searchers to be on the lookout for signs of Rand's clothing, volunteers alerted them to the find at the campsite. Peragine found the suitcase last night. It was empty.

Investigators and volunteers had no clues as to what may have happened to the contents of the suitcase.

Volunteers dug about a foot down into the ground beneath the cross, tombstone and overturned shack, coming up with nothing but dry soil. Authorities estimated the campsite had not been used for more than a year.

Detectives returning to the campsite today will determine if further digging is warranted.

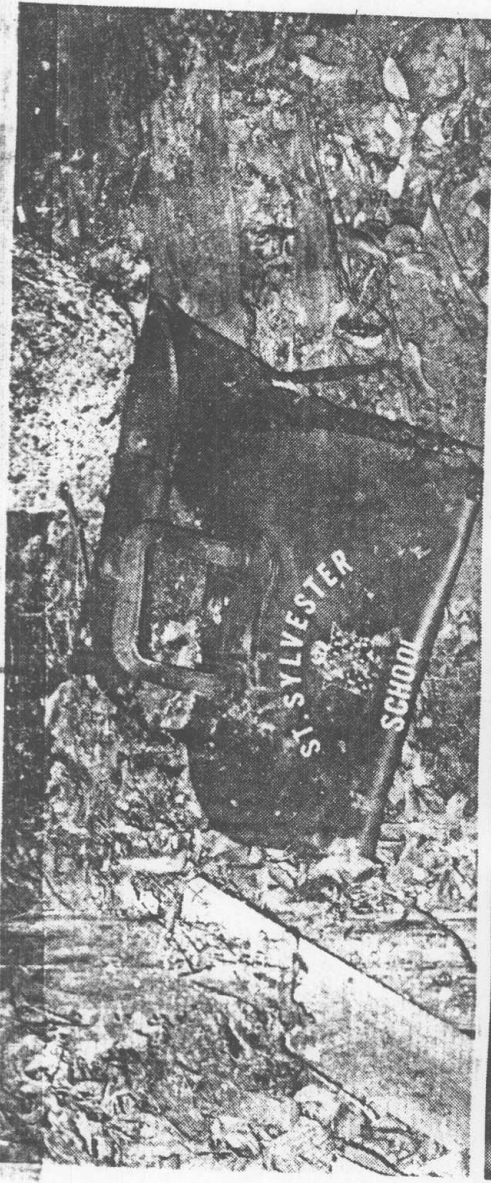
Rand has been known to live in campsites near Baron Hirsch and Moravian cemeteries, on the Mariners Harbor coastline, and on the grounds of Staten Island Developmental Center.

Jennifer Schweiger's body was found earlier this month buried in a shallow grave near Rand's most recent campsite behind Building 27 on the grounds of SIDC. Jennifer was last seen walking with Rand on the SIDC grounds when she vanished July 9.

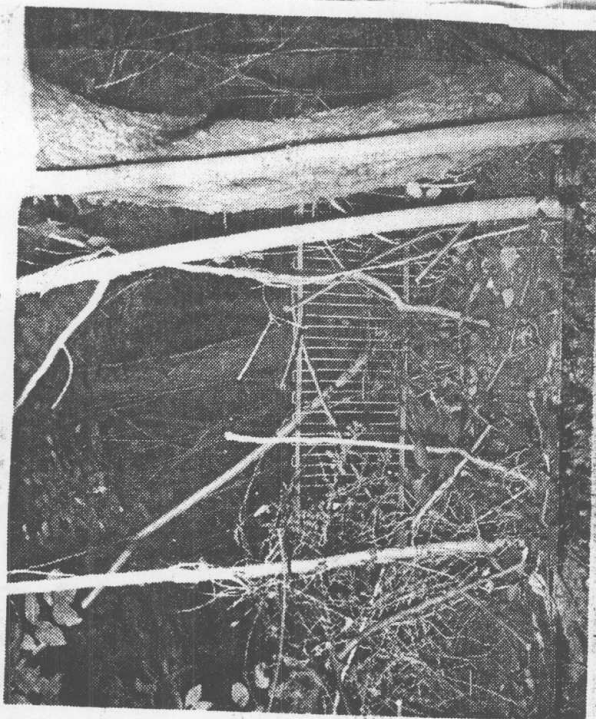
Detectives last week executed a warrant to search the room Rand lived in when he stayed with Rev. Charles Muskett on Castleton Avenue in West Brighton after being forced from his campsite during the search for Jennifer. Police cited a need to conform with rules of evidence, and not lack of cooperation on Muskett's part, in explaining the need for the warrant.

Page 2  
of  
3 Pages

A St. Sylvester School bag sits among the rubble at a campsite believed to have been used by Andre Rand.



Old milk crates and pieces of plywood litter the campsite.



A gate and several branches form a man-made barrier.