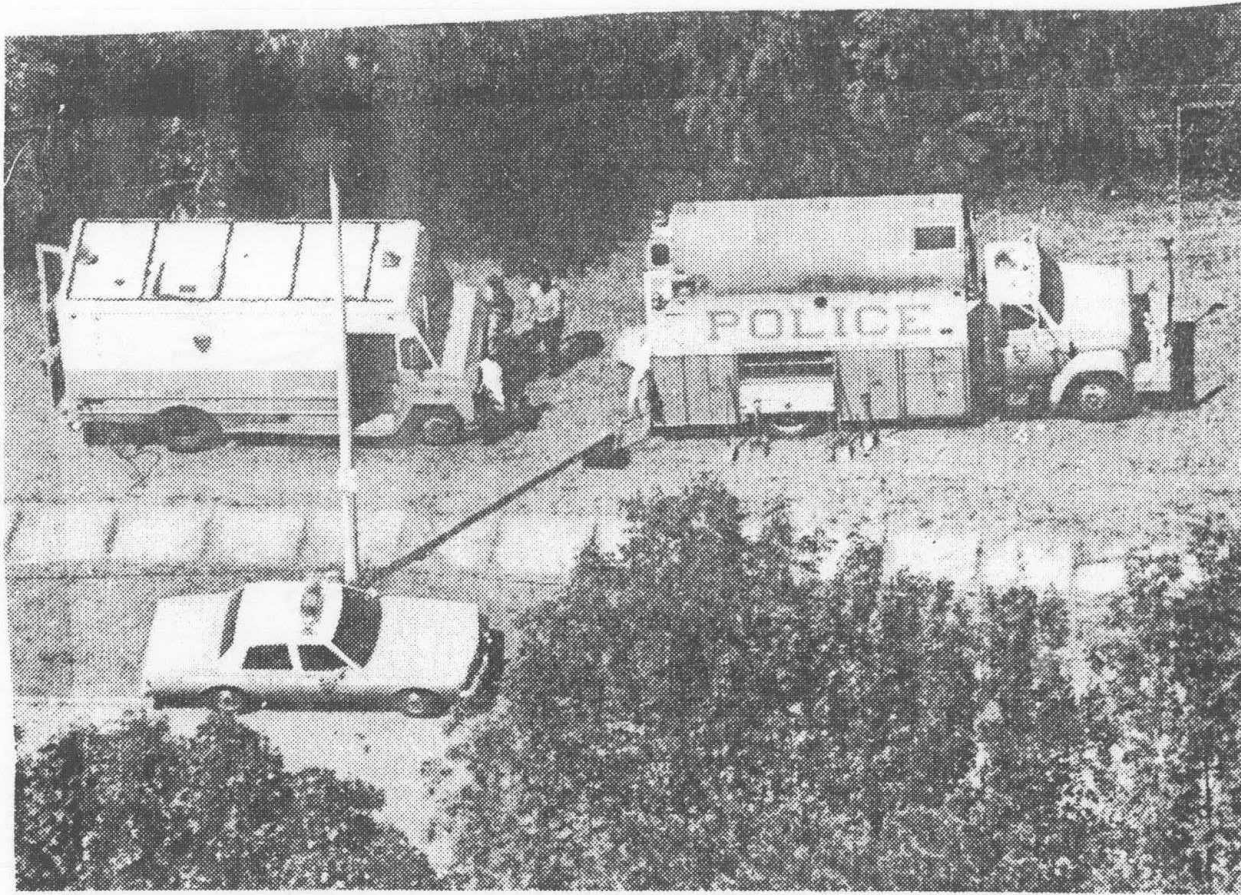


*Pages of 6 pages*



For most of yesterday two large special police operations division trucks remained parked at the mouth of the path leading to the gravesite.

were continuing to follow up on information called into a police hotline number, 447-4168. Some of the tips have resulted in detectives tracking down a series of people to interview, police said.

"We've put a tremendous amount of effort into this case, and it's not about to stop," Wallace said last night.

Authorities earlier in the search for Jennifer marked Rand as a suspect in the disappearance of

three other Island girls over the past 15 years.

Rand was questioned by detectives investigating the 1981 disappearance of 7-year-old Holly Ann Hughes. The day Holly Ann disappeared, Rand had reportedly visited an aunt who was the young Port Richmond girl's neighbor.

Detectives have also looked into a possible link between Rand and the disappearance of 10-year-old Tiahease Jackson of Mariners

Harbor in 1983.

Authorities early in the search for Jennifer said there may also be a connection between Rand and the 1972 disappearance of Alice Pereira, who was 5 years old when she vanished from a park near her New Dorp apartment. Police confirmed that Rand worked as a painter in the missing girl's apartment complex at the time of her disappearance.