

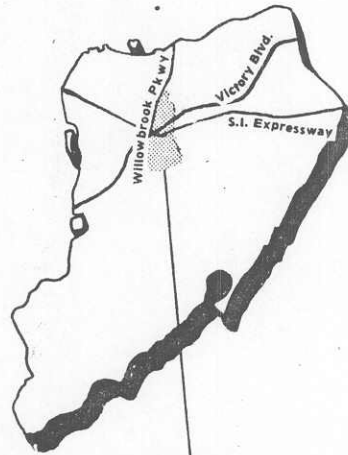
This is ... Willowbrook

Willowbrook is at the heart of the borough's mid-Island area, a sprawling community that is home to untouched woodlands, modern housing developments and established residential areas, a large city park and an extensive state complex.

The community stretches from the Greenbelt almost to Forest Avenue on the north; it is bisected by the Staten Island Expressway and Victory Boulevard and bordered by the Willowbrook Expressway. In part because of those conveniences, at least for motorists, Willowbrook's residential and business areas have grown rapidly in the last decade.

As busy as Willowbrook can be, it can also be peaceful. Willowbrook Park, with its ballfields, woods and pond, is one of the borough's most serene spots. Willowbrook also contains portions of Staten Island's rural Greenbelt.

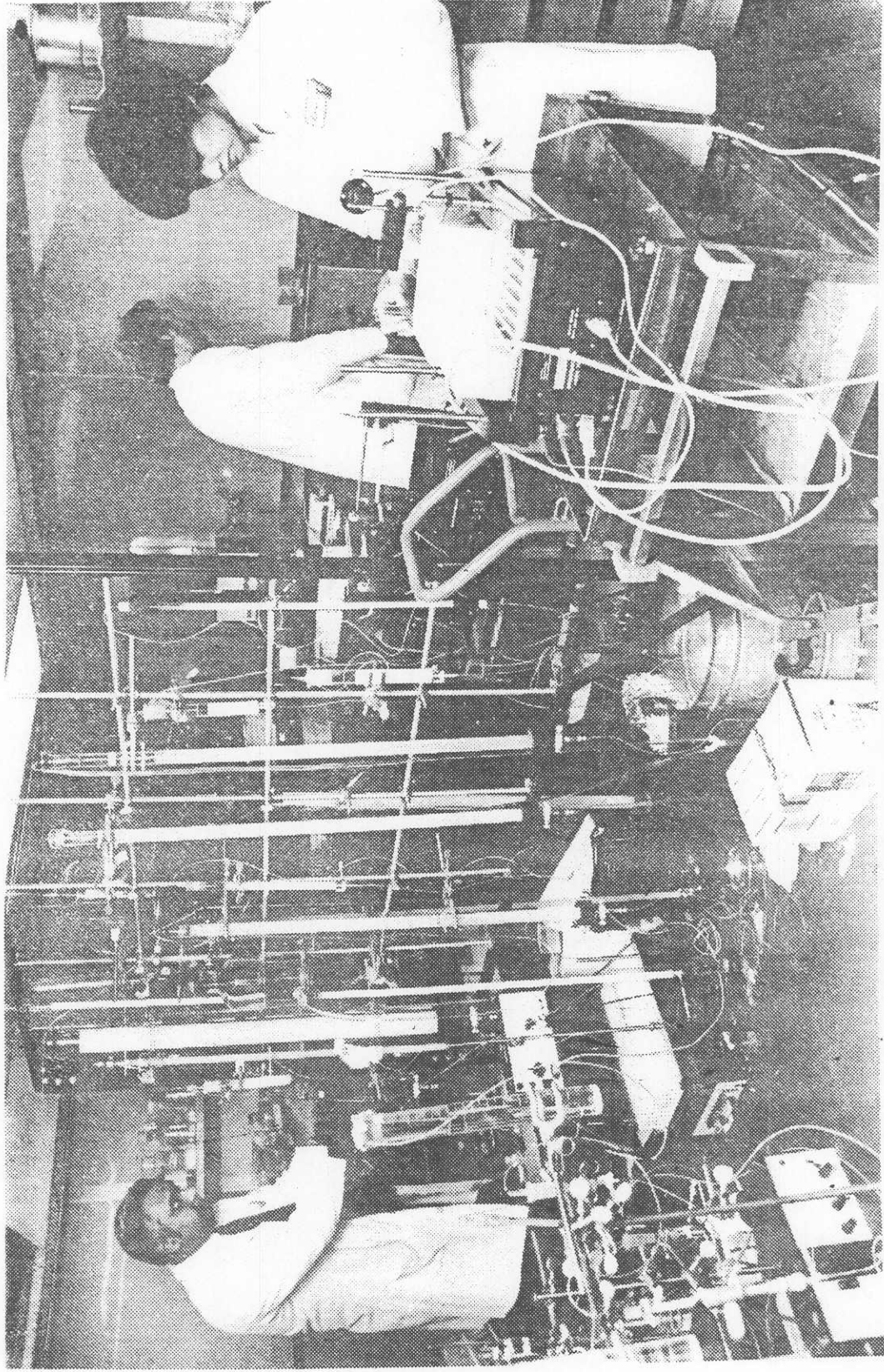
One of Willowbrook's focal points, the Staten Island Developmental Center, is preparing for dramatic change as the center reduces its operations to a bare minimum. The future of the land and its facilities is currently the subject of debate, with the College of Staten Island proposing to use a portion of the property to form a consolidated



Willowbrook

campus. Meanwhile, advocates for the handicapped are trying to insure that some of the land continues in its historic role of providing services for the disabled.

Willowbrook's burgeoning population includes a sizeable Jewish community, which has settled south of the expressway and has become an active part of Staten Island's civic and cultural life.



Dr. Mazhar Malik, left, Michael Fenko and Myrna Castillo work in the low temperature room at the Institute for Basic Research and Developmental Disabilities. The state facility is next to the Staten Island Developmental Center.