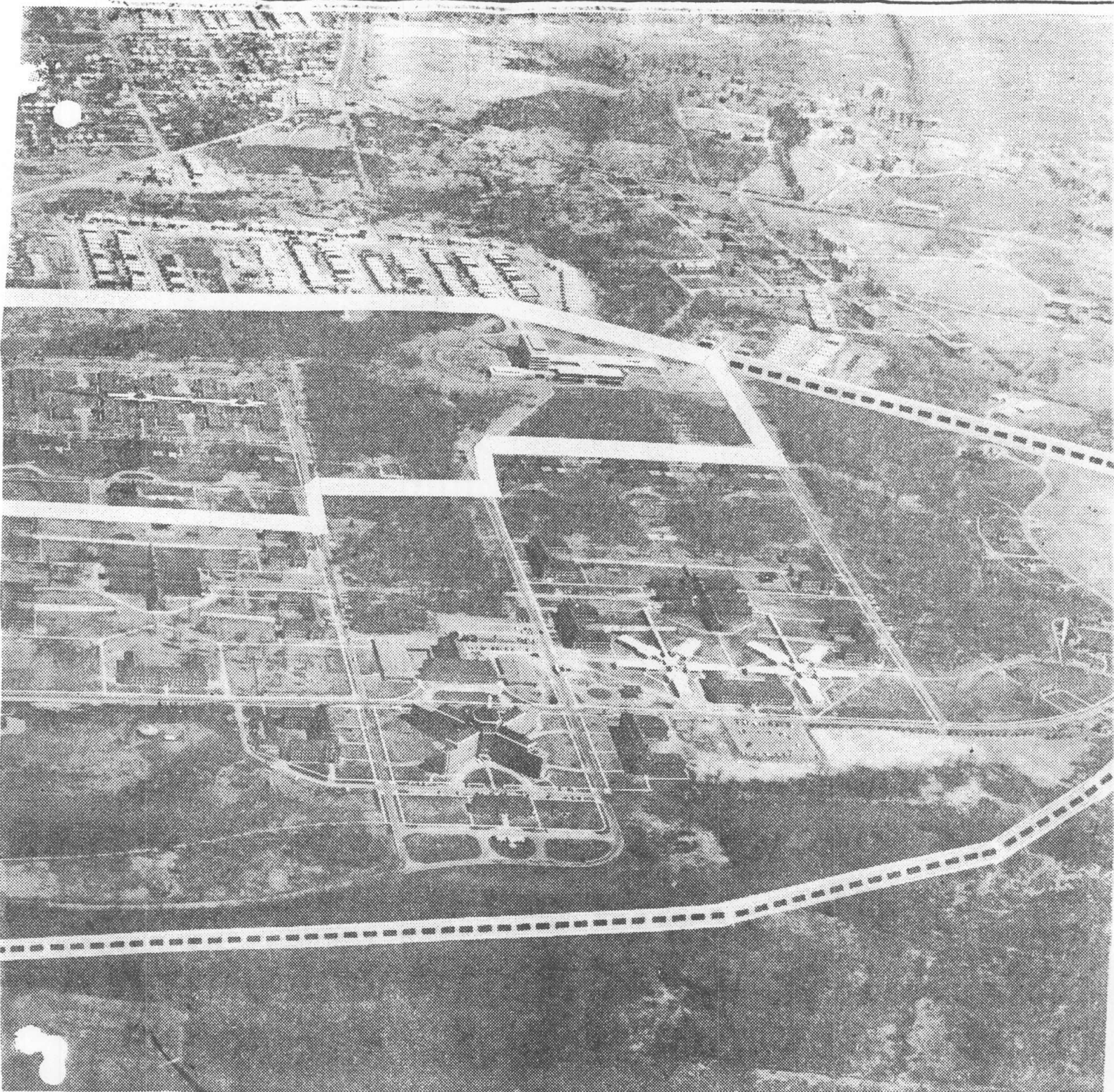


Fate of 300 acres of Willowbrook land under study

STATEN ISLAND ADVANCE, Monday, September 28, 1981



The area enclosed by the solid white line is what would be retained by the Staten Island Developmental Center after it reduces its population to 250 residents in 1983. It includes seven buildings and the Institute for Basic Research in Mental Retardation, at right. The future of the remaining land and buildings, within dotted border, is under study. A small part of the state-owned land to the left is not shown in this photo.