

Mental health: Many diagnostic, treatment services here

Community residences are back in the news again.

First, there is the ongoing problem at the Staten Island Developmental Center, formerly known as Willowbrook State School for the Retarded.

A court decree in 1975 mandated the center to reduce its population to 250 residents this month. But the center still has about 1,000 residents under its direct jurisdiction and 500 more under the care of United Cerebral Palsy of New York State on the Willowbrook campus.

The change from caring for the mentally retarded and mentally ill at large, impersonal state institutions to smaller, more home-like facilities is part of the state's program phasing out institutions.

Moving the center's residents into group homes on Staten Island and the rest of the city has not been easy, and as a result the center may face a contempt of court citation for not week.

The center's new director, Ella Curry, was appointed in November to succeed Elin Howe, who had been director for three years.

Also in the news are plans to establish community residences for psychiatric patients by the state Office of Mental Health. This plan, like the one for group homes for the retarded, has created a stir in communities that oppose it.

South Beach Psychiatric Center officials say only a "small number" of three-person apartments for psy-

chiatric patients is being planned for Staten Island, but the Island's three community boards and Borough Board are all keeping a close watch on the situation. Here are the facilities available to serve the mentally retarded and physically disabled on the Island:

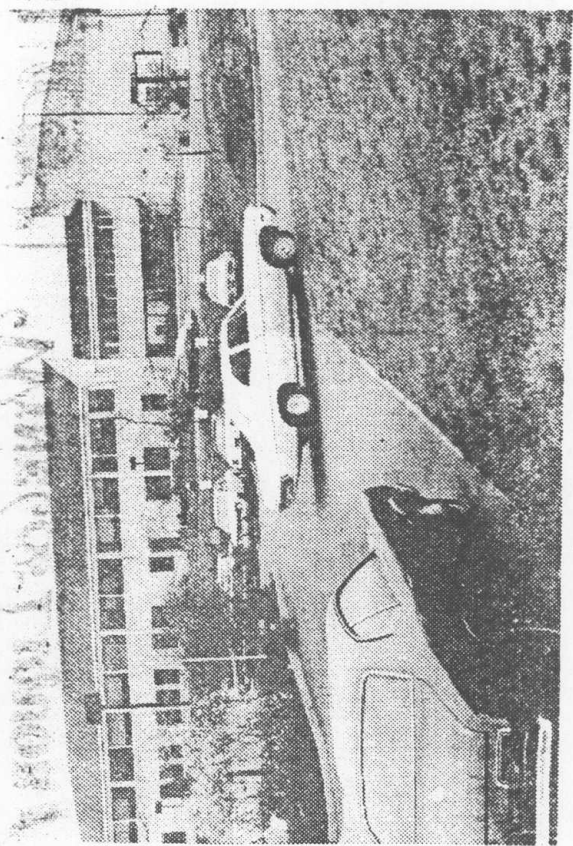
¶ The Staten Island Borough Developmental Services Office is now establishing an information and referral service for developmentally disabled or retarded persons. The office is scheduled to open next month at 26 Dumont Ave., Dongan Hills. The phone number is 351-7701.

¶ Staten Island Developmental Center, 2760 Victory Blvd., Willowbrook, has a complex of buildings on a 382-acre site and is administered by the state. Because of the court decree, the center is not accepting new admissions. It offers several services, including a respite-care facility on its campus. United Cerebral Palsy operates a program at the center for about 500 residents, formerly cared for by the state.

¶ Staten Island Aid for Retarded Children, based at 1150 Castleton Ave., West Brighton, provides a day training center with sheltered workshops and other social trainings, as well as operating two group homes in Tottenville and Willowbrook.

¶ Staten Island Aid Rehabilitation Center at 215 Bay St., Tompkinsville, offers a sheltered workshop for adults.

¶ Staten Island Blind Society at 352 Nelson Ave., Great Kills, is a



The South Beach Psychiatric Center.

S.I. Advance Photo by Irving Silverstein

cular Dystrophy Association has a referral center a 76 Guyon Ave., Oakwood.

¶ United Cerebral Palsy of New York City offers a sheltered workshop for adolescents and adults at 296 Richmond Ave., Port Richmond.

¶ The Volunteers of America Care Facility runs a group home at the Arlington Terrace Apartments, Mariners Harbor, for 12 residents. It also operates seven apartments housing 12 retarded adults.

The following programs are offered for the mentally ill or learning disabled:

¶ South Beach Psychiatric Center, 777 Seaview Ave., Ocean

voluntary group meeting twice a month.

¶ The Downs Syndrome Foundation, 10 Joline Lane, Tottenville, is a school for children with Downs Syndrome, commonly known as mongolism.

¶ Job Path, 30 Bay St., St. George, a division of the Vera Institute of Justice, has operated an on-the-job training program for retarded adults since June.

¶ The Institute for Basic Research in Mental Retardation, 1050 Forest Hill Rd., Willowbrook, searches retardation and its causes.

¶ The Staten Island Chapter, Mus-

Breeze, is a 230-acre state-run facility serving 340 in-patients and 5,000 out-patients from both Staten Island and Brooklyn. The facility offers everything from family counseling to individual treatment.

¶ The Bureau of Child Guidance is affiliated with the Board of Education and provides counseling, diagnosis and referral services to public school students.

¶ The Goodhue Center of the Children's Aid Society, 304 Prospect Ave., New Brighton, offers out-patient services for children, teenagers and adults primarily from the North Shore.

¶ The Staten Island Counseling Center, 3974 Amboy Rd., Great Kills, is affiliated with the Jewish Board of Family and Children's Services and offers community education, diagnosis and evaluation at its out-patient treatment clinic.

¶ The North Richmond Community Mental Health Center offers emergency services at St. Vincent's Medical Center, West Brighton. It also has an in-patient clinic at the Clove Lake Nursing Home, 25 Fanning St., Castleton Corners, and a day hospital at Sea View Hospital and Home, Brielle Ave. The center operates its main out-patient clinic at St. Vincent's with satellite clinics at 220 Richmond Ave., Port Richmond; 114 Central Ave., St. George; 7774 Manor Rd., Meiers Corners; and 690 Castleton Ave., West Brighton. It also offers a community treatment clinic at 1050 Forest Hill

Rd., New Springville, and a suicide crisis hotline operating around the clock, 390-1417.

¶ The American Institute Center for Creative Living has an out-patient diagnostic clinic at 2295 Victory Blvd., Meiers Corners.

¶ The Staten Island Family Service, 25 Victory Blvd., Tompkinsville, offers out-patient counseling for individuals and families.

¶ Staten Island Hospital has a psychiatric out-patient clinic on Seaview Ave., Ocean Breeze.

¶ The Staten Island Mental Health Society, based at 657 Castleton Ave., West Brighton, is perhaps the single largest provider and contractor of mental health services on Staten Island. It has a South Shore clinic at 3974 Amboy Rd., Great Kills, and satellite clinics at 350 Vanderbilt Ave., Clifton, and 220 Richmond Ave., Port Richmond. The society also has a day treatment center at South Beach Psychiatric Center. In addition, it operates special programs for children and is the parent agency of the Staten Island Center for Developmental Disabilities, located on the Wagner College campus.

¶ Staten Island Center for Learning and Learning Disabilities, 2627 Hylan Blvd., New Dorp, provides services to children with learning skill disabilities.

¶ Staten Island Reception Center, 103 Targee St., Stapleton, offers a diagnostic emergency and consultation service: