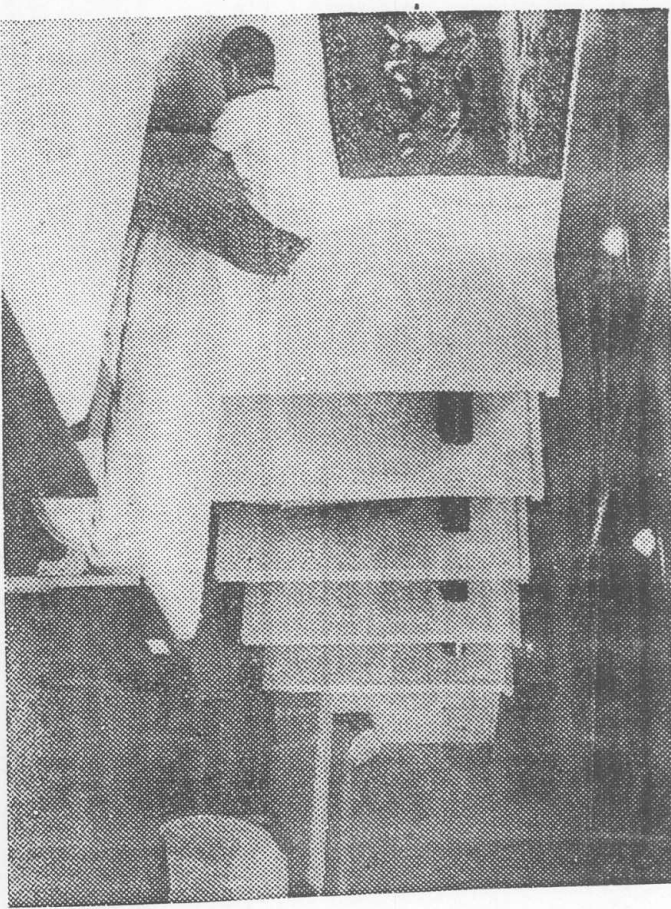




Yesterday was moving day for residents (top photo) involved in Operation Move at Staten Island Development Center. Dr. Ella Curry (photo right), center's acting director, hopes program will help residents get back "on track."



BOB KOLLER DAILY NEWS

300 Willowbrook patients moved

By MARY ENGELS

For the past two days 300 residents of the Staten Island Developmental Center in Willowbrook have been involved in operation "Move" which will relocate residents to several buildings in which they can get a specific kind of treatment service.

"It's all part of our long range goal to improve the quality of care at the center," explained acting director Dr. Ella Curry.

"At the same time it will help prepare them for their eventual move into the community."

Curry said that the move was necessary in an effort to get everyone back on track.

"We found that some of our residents were in a building that was teaching the the activities of daily

living when they should have been in a higher level program such as vocational training skills.

"WE DECIDED TO PUT together a task force to find the best way to go about better coordinating the treatment of services. We came up with a plan of organization based on a tracking system."

The director said they chose six buildings and in each placed team leaders and specific services.

"One, for example, deals with the clinical aspect, another with rehabilitation, and so on.

"As each individual is evaluated he or she is placed in the appropriate setting best suited for their needs.

Curry said the move is being conducted with a minimum of problems. "We closed off the grounds, put everyone on buses. Then in convoy

transported everyone to their building assignments."

THE DIRECTOR SAID, "Our goal is to continue to look at more individual programming with emphasis on treatment within program services.

"We are also looking at ways to expand our ability to assist them when they go out into the community.

"Community placement has been slow due to community objection to some of the sites chosen.

"However, each community board area is required to come up with settings to house approximately 80 beds in each," said Curry. "Board 1 has more than its share, Board 2 will soon have two residential settings opened in April.

but it still needs more. We are attempting to identify two sites for construction in Board 3 which has a long way to go to reach the goal."

