

Board 1 knows its problems - —it meets in middle of them

to Port Richmond, and others.

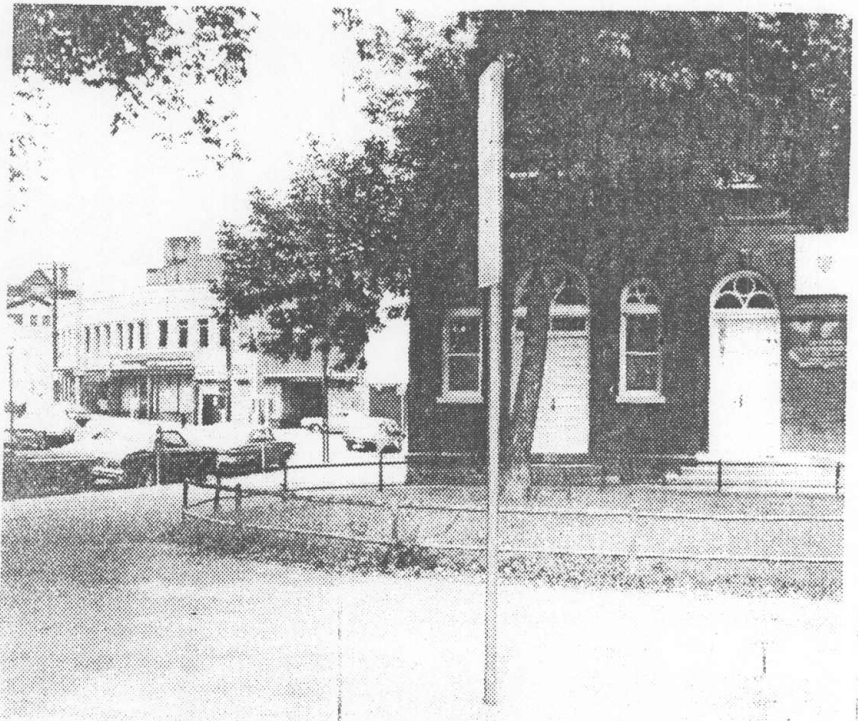
One issue, which might be a sore point because it has yet to be resolved is that regarding the methadone clinic.

"We know that no neighborhood on the North Shore wants a methadone clinic, but we also know that most of the people in need of methadone maintenance services live in our area. Therefore, we're committed to supporting methadone services in our district knowing full well we'll be severely criticized for attempting to locate a clinic in our district," Lamanna said.

Norman Berger, the board's district service manager, explained that with the methadone clinic, "it's not just Stapleton that is the issue. The issue is providing services to people who are residents in the Board 1 area."

Berger is, like many board members, confident that the clinic will eventually be relocated.

"I don't think it's so far in the future," he said. He added, however, "The longer it bounces from one agency or elected official to another, the longer it remains in Stapleton, and everyone has agreed that that is the worst possible location."



Community Board 1's headquarters, right, is located just steps away from one of Stapleton's ills — the methadone maintenance building, the shingled storefront in the row of stores in the background.

S.I. Advance Photo by Irving Silverstein