

# Boarding house probe sought; living

(From Page 1)

asked state agencies to investigate how the residents' finances were being handled. "Presumably," she said, "checks are going directly to landlord."

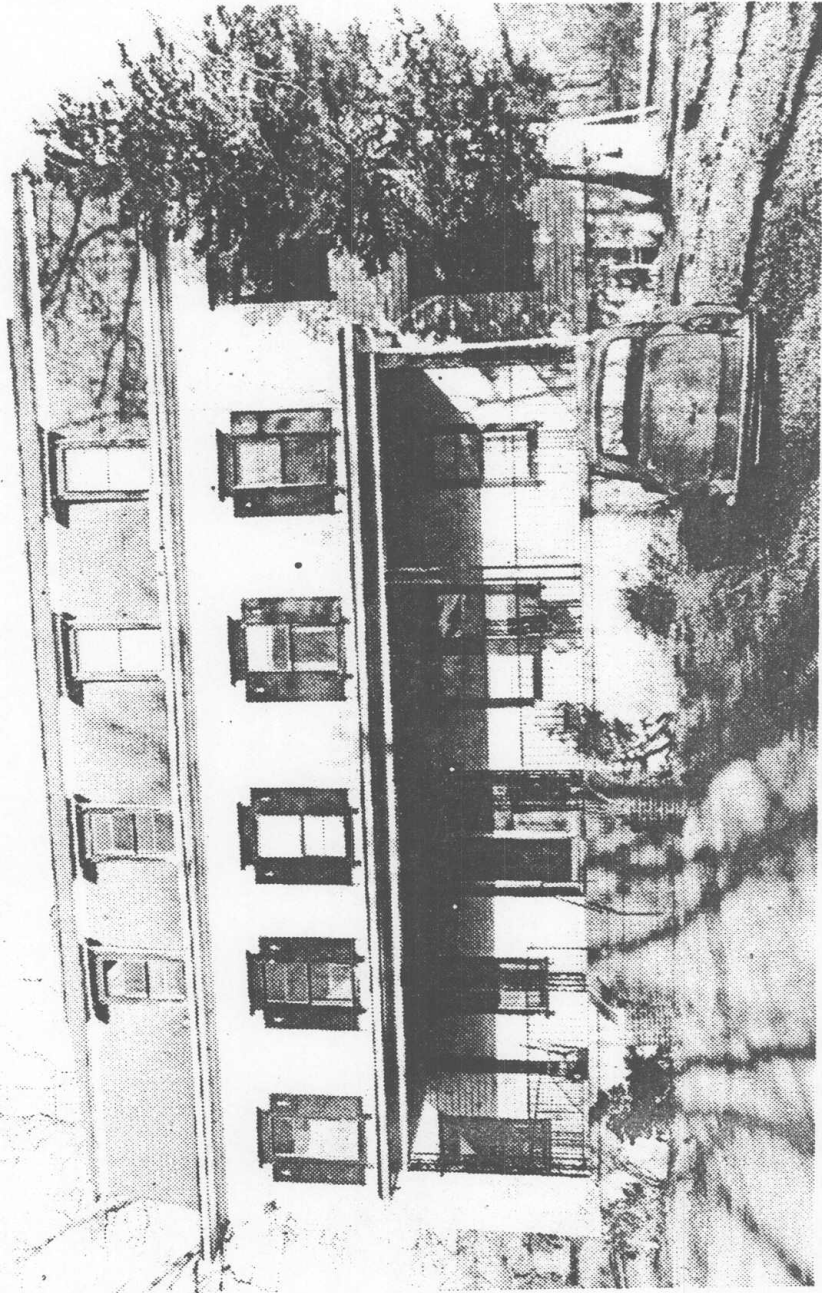
Guddemi denied that allegation. He said he charged \$152 a month for a room - the maximum city welfare reimbursement allowed to one person. Persons receiving food pay \$250, also the maximum for shelter and food allowed by welfare.

Some residents said they gave their checks directly to Guddemi and that he, in turn, gave them back what he said was left over from the rent and food payment. Guddemi said most of the residents were unable to take care of their money, a statement echoed by other officials familiar with the residents.

Mrs. Connelly, who is chairman of the state Assembly's mental health committee, said it was her opinion that people living in the building "were not ready to live on their own in the community" even though they had been discharged from the South Beach Psychiatric Center and the North Richmond Community Mental Health center.

She referred to a new psychiatric referral unit the state Department of Mental Hygiene is establishing at the St. Vincent's Medical Center in West Brighton and said: "They set up a new unit to refer people to a place like this?"

She said if this "is the best the state can do, then we are just not doing our job."



A burned-out car sits in front of the former Christmas Tree Inn at 51 Wilber St. in Princes Bay.

Page 3 of 5 Pages