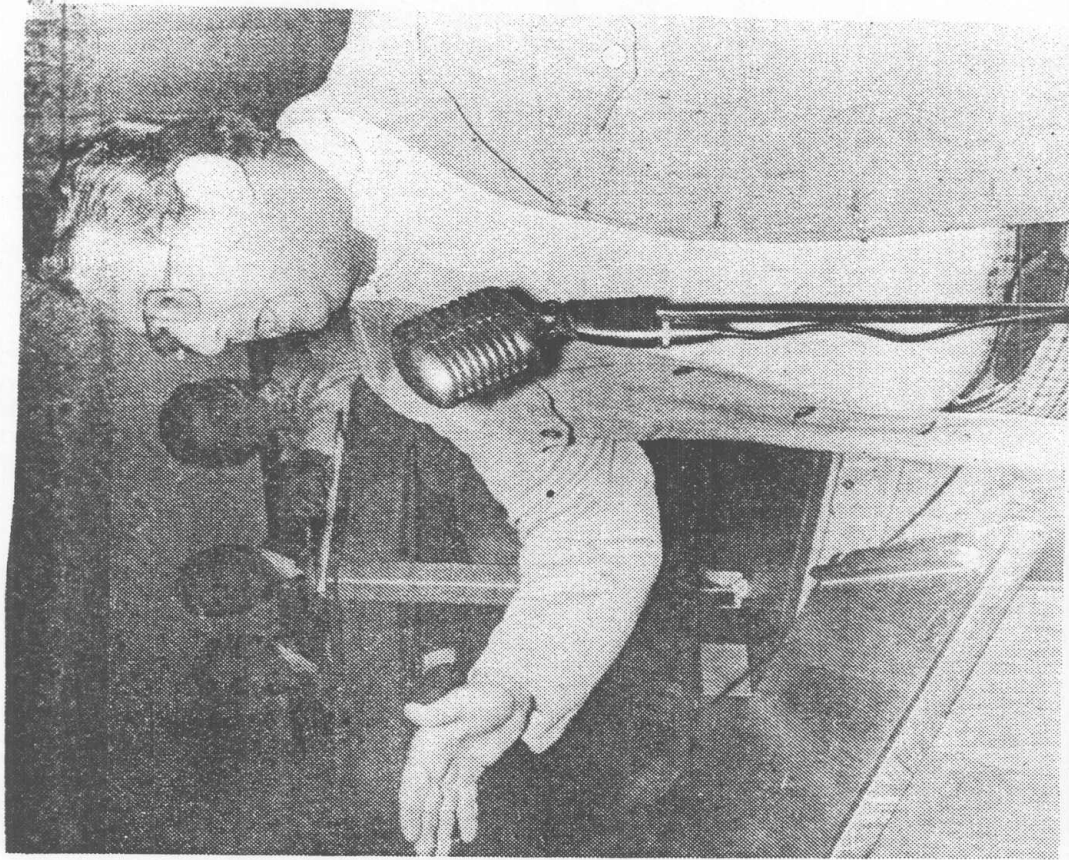


Genevieve Drill of Tottenville tells why she opposes group homes in her neighborhood. Elin Howe, left, director of the Staten Island Developmental Center, and Sonia Braniff, board chairman of the Staten Island Regional Retardation and Disabilities Council, listen.



Paul Merrill, president of Concerned Parents of Retarded Children, speaks in favor of group homes.

91-S.I. Advance Photos by Tony Carmona  
10-11-68 11:30 AM  
10-11-68 11:30 AM

Page 3