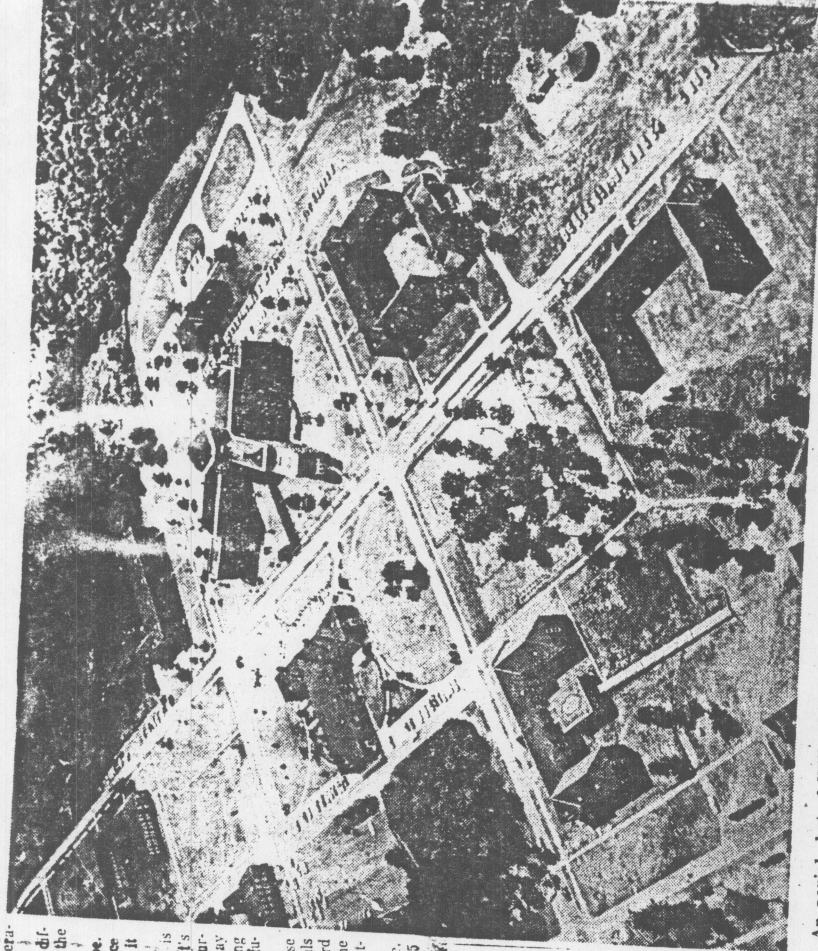


A Problem: What's Wrong With Willowbrook?

By MARK WIENNER
(SIT OF FOUR ARTICLES)

Indirectly, they affect us all with a huge grin as he is session of periods of recuperation. Conditions at Willowbrook are playfully tugger along by a nun tion and relapse. First, there are plenty of how people feel during a period of Catholic in- It's a world which has a different scale of values than the State School. tion, and what they are willing. To brighter children it's outside world. to settle for in the way of care, school and learning and under- A youngster lacing his shoe. standing life in a microcosm of. Something so commonplace that it's hard to think of it as an accomplishment. BUT THE VAST, sprawling life on the outside. To some children, it is an accomplishment. brook is more than an institu- cession of pain. Sometimes, it's an accomplishment. To a severely retarded child above, the physical affliction service workers, the bulk of the ward to ward. It varies also in the inhabitant. To a severely retarded child above, the physical affliction service workers, the bulk of the ward to ward. It varies also in the inhabitant. To a severely retarded child above, the physical affliction service workers, the bulk of the ward to ward. It varies also in the inhabitant.

And for good reason. The wrong things, or a combination of wrong things, resulted in three accidental deaths within recent months. Then followed a slaying. The accidental deaths resulted in a grand jury inquiry getting under way into conditions at Willowbrook. The right or wrong things at Willowbrook directly affect a patient population of more than 6,000 and a work force of 2,400. To the child, his face creased life is little more than a suc- a year.



An aerial shot of Willowbrook State School shows the vastness of the institution whose 107 wards house more than 6,000 retarded. The institution has nearly 2,500 employees.



Children at Willowbrook State School are seen in a classroom. The institution has nearly 2,500 employees.