

# Lags on Addition Bring 15-Hour Wash Days to State School

**By ERWIN ENDRESS**  
 Prolonged delays in construction of Willowbrook State School's new \$750,000 laundry addition is keeping the institution's limited laundry humming 15 hours a day on weekdays and for a full day shift on Saturdays in order to

keep up with the wash. The trouble is, the institution's officials say, that the present laundry was intended for a facility of no more than 4,000 patients. The present patient census at Willowbrook exceeds 5,700.

The laundry addition, in construction since early in December of 1959, after state money for the project was carried over in succeeding budgets for four years, was intended to meet needs construction work on the needed laundry addition limped behind. In fact, state Public Works

officials said, the addition limped so slowly that on several occasions Albany officials have visited the slow-motion project to figure out reasons for the tardiness.

The laundry addition is a joint project of the Rockland Construction Corp. and the Phillips Construction Corp., both Manhattan firms. With the addition now about 60 per cent complete, officials of the state Public Works Department's construction division figure it will be the fall of this year before it will be ready for use.

**DR. HAROLD BERMAN**, Wil-

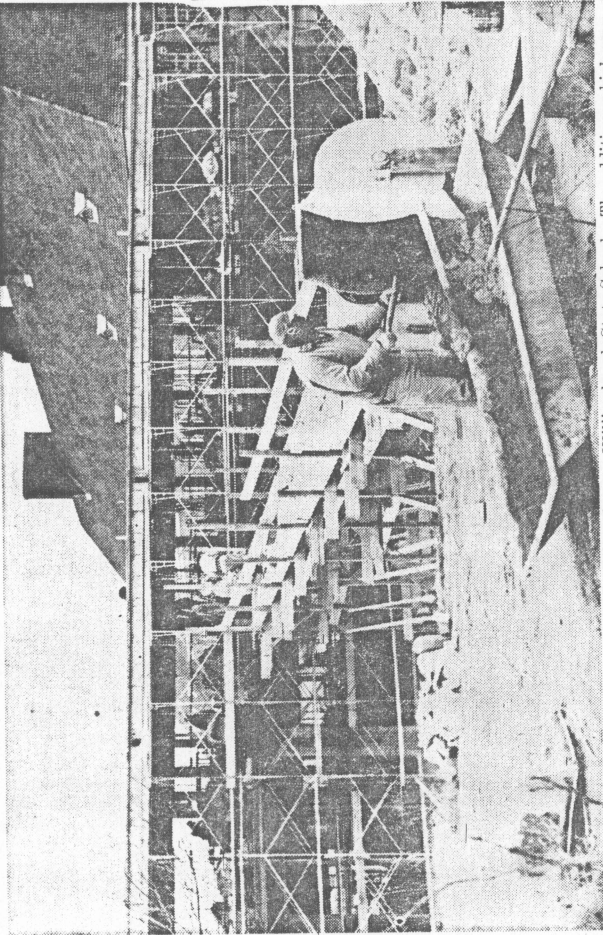
lowbrook director, said present by the contractors for the de-rapid expansion of the machinery and the laundry labor lays. The recent worst of all post-census following completion of force are being hard-pressed to stable winter for construction men half-dozen new infirmary buildings and a large new kitchen and cafeteria on the Willowbrook grounds.

He said the present laundry operates from 8 a.m. to 11 p.m., deliveries of essential construction items also have been cited. John Wilson, resident engineer for the state Public Works Department, says that with "the change in the weather," construction has been moving along much more rapidly. There now is "every reason to believe" that Willowbrook's laundry will be ready this fall, although nine months late, he said.

New demands on the present laundry plant are a result of spacttes expected "shortly."

**IN ADDITION** to handling the laundry of the 5,700 patients, the plant also is called upon to satisfy associated needs for the 1,700 employees at Willowbrook. Other work still is under way at Willowbrook. This is a \$150,000 remodeling of an annex for use of spastic children. But Willowbrook officials say this work is nearing completion. New demands on the annex by employees at Willowbrook.

Several reasons are given laundry plant are a result of spacttes expected "shortly."



**BEHIND SCHEDULE**—After being halted by the severe weather, the steel strike, steamfitters strike and slow delivery of essential building supplies, work is now going ahead on an addition to the laundry at Willowbrook State School. The addition, which was scheduled to be completed last December, is now expected to be ready in the fall. As a consequence, present facilities are overworked.