

Round of Yule Parties Set For State School

Days of anxious waiting will end Christmas Day when Santa Claus hands out thousands of gaily wrapped gifts to the 4,515 residents at Willowbrook State School.

If past reactions are any indication, the traditional turkey dinner with all the trimmings that follows will climax the yule season.

Within the next week the children will have one Christmas party after another staged by organizations such as Grasmere Post, American Legion, tomorrow; the New York City Council of Jewish Women, and the Dongan Hills Girl Scout Troop, Saturday, and the Brooklyn Girl

Scout Council and the Benevolent Society for Retarded Children, next Wednesday.

Parties already have been staged by the Kings County Jewish War Veterans, Con Edison Post, American Legion; Tottenville High School and the St. Louis Academy (Pleasant Plains) Choir.

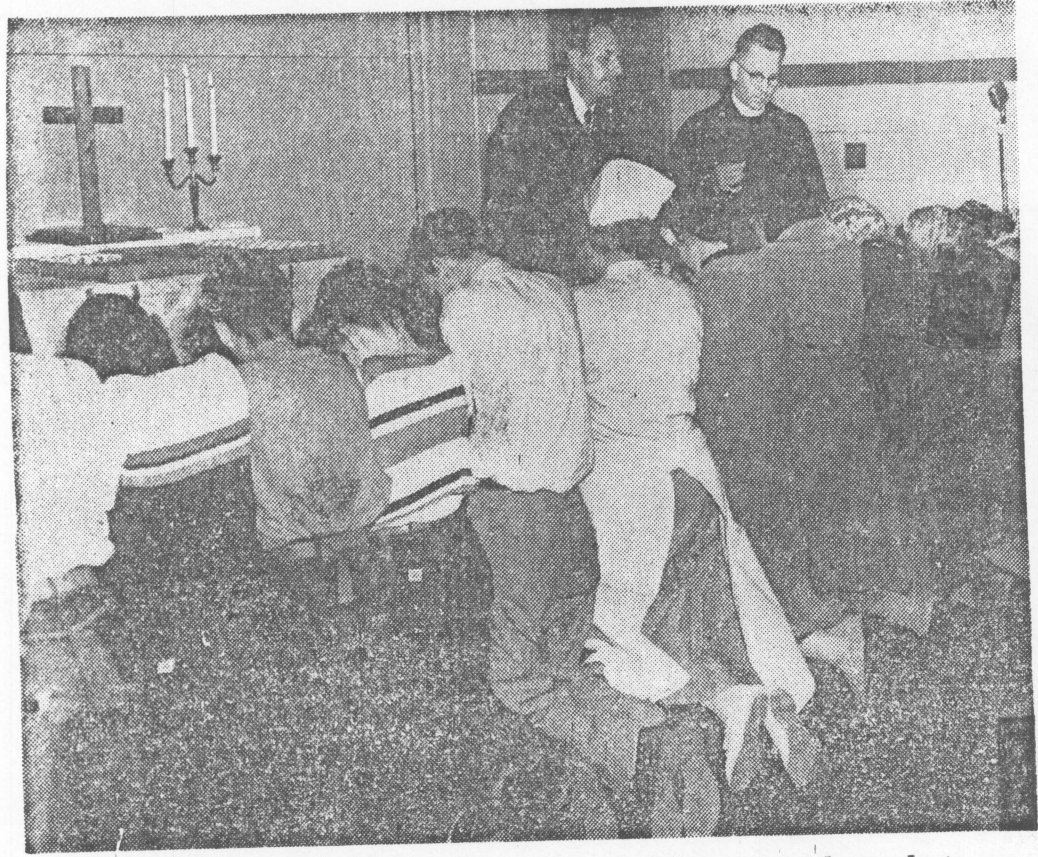
State School To Dedicate Pony Ride

A pony ride addition to play equipment for children at Willowbrook State School will be dedicated at the school tomorrow at 2:30 P.M., the school has announced.

The equipment was donated by the Dora Scher League for Handicapped Children and the Benevolent Society for Retarded Children.

Dr. Harold Berman, Willowbrook's director, will preside at the dedication. The school band will play.

Jan. 15, 1957



400 RECEIVE COMMUNION—Patients, accompanied by nurses and attendants, are at the rail of the chapel in Willowbrook State School to receive communion from the Rev. Dr. J. Murdock Palmer, school chaplain, left, and the Rev. Thomas O. Williamson, pastor of Eltingville Lutheran Church, at special Protestant communion service.

Willowbrook Director Heads Area Group

Dr. Harold H. Berman, director of Willowbrook State School, became chairman-elect of the Northeast Region, American Association of Mental Deficiency, at an annual meeting yesterday in the Southberry (Conn.) State Training School.

Dr. Berman will plan the unit's program for the coming year until he automatically becomes chairman next October.

The region comprises the states of New York, Connecticut, Maine, New Hampshire, Vermont, Massachusetts and Rhode Island.